

Environmental taxation, employment and public spending in developing countries¹

Karlygash Kuralbayeva

Department of Geography and Environment, LSE

July 21, 2017

Abstract

This paper investigates the consequences of environmental tax reforms for unemployment and welfare, in the case of developing countries with a large informal sector, rural-urban migration, and three different assumptions about public spending: (1) as part of a revenue-neutral policy, (2) fixed, and (3) varying endogenously. Under the indexation of unemployment benefits and informal-sector income that give rise to a double dividend, a lower level of public spending is associated with a smaller negative impact on the after-tax income of households and a higher increase in employment. These policies, however, still lead to a reduction in social welfare; even more so in the case of endogenous public spending, although it is associated with a higher increase in employment and a smaller reduction in private-sector incomes. The model implies that complementary policy, in terms of lower public spending, is unlikely to be socially acceptable, and does not support the case for a green tax reforms in developing countries.

Keywords: informal sector, matching frictions, rural-urban migration, pollution taxes, double dividend

JEL Classifications: H20, H23, H30

¹A previous version of this paper was circulated under the title, *Effects of carbon taxes in an economy with large informal sector and rural-urban migration*. I thank Alex Bowen, Emmanuel Combet, Baran Doda, Richard Freeman, and Rick van der Ploeg, as well as seminar participants at LSE, the GRI-GGGI Green Growth conference, and the World Congress of Environmental and Resource Economics (Istanbul) for helpful comments and suggestions. I am also grateful to the editor and the referees for thoughtful comments that have significantly improved the paper. I also thank Anna Grodecka and Eileen Tipoe for excellent research assistance. I was employed by the Grantham Research Institute at LSE for much of the project. I acknowledge financial support by the Global Green Growth Institute (GGGI), the Grantham Foundation for the Protection of the Environment, and the UK Economic and Social Research Council (ESRC) through the Centre for Climate Change Economics and Policy. All potential errors are my own. Contact: k.z.kuralbayeva@lse.ac.uk

1 Introduction

Environmental tax reform is one of the most effective tools that can be used in a fundamental transformation towards a green economy. When contemplating the introduction of environmental taxes, governments often consider whether such taxes, besides helping to achieve environmental goals, should also play a larger role in achieving other social and economic targets, such as reduction in unemployment rates. Previous studies, however, found that policies that reduce unemployment rates tend to be costly in terms of other policy objectives as they reduce private incomes, including those of people who are on state benefits². This makes it politically difficult to implement environmental policies. As a result, to make green tax reforms socially acceptable, economists have argued that complementary policies such as public spending cuts could be used to reduce the environmental tax burden on private sector income (see Koskela and Schob (1999) and Bovenberg (1995)).

This paper evaluates the implications of this argument for unemployment and social welfare for the case of developing countries. The theoretical framework features an economy with three sectors: urban formal, urban informal, and rural agricultural. Following Pissarides (2000), search and matching frictions form the distinction between formal, or “regulated” jobs, and informal, or “unregulated” jobs. Workers in the informal sector search for jobs in the formal sector, and the unemployment rate is defined as the proportion of the labour force that is in informal-sector self-employment. The economy imports both energy and capital at given world prices to use as inputs in registered production activities.

I consider three public spending policies: (1) as part of a revenue-neutral policy, (2) fixed, and (3) varying endogenously with GDP. As such, I study how various assumptions about public spending impact the effects of environmental policies on unemployment and social welfare. In this way, I am also able to compare the results with previous studies that have focused on revenue-neutral policies. Environmental policies considered in the paper are in the form of increases in energy tax rates. The model is calibrated to match some key aspects of labor markets in Mexico and is solved numerically.

The three main findings of the paper are as follows. First, I find that the income of agricultural workers fall under all policy scenarios, even though they do not pay energy taxes. This is because the higher burden of taxation imposed on the unemployed prompts them to escape the brunt of taxation by searching for a job in the formal sector or by migrating into rural areas. This inflow of labor into the agricultural sector pushes wages down in that sector. This is the key difference to previous studies of the double dividend in the context of developed countries, as it shows the importance of modeling the Harris-Todaro effect (Harris and Todaro (1970)) when measuring the incidence of higher energy taxation on poverty within the context of developing countries.

Second, I establish that relative to the scenario of revenue-neutral public policy, environmental tax policies with requirements on public spending, such as (2) and (3), are associated with a larger reduction in the unemployment rate and a lower reduction in after-tax private income. Intuitively, since labor taxes have a broad tax base, when public revenues are fixed there is less scope for the reduction of labor taxes under a revenue-neutral policy compared with when public spending is fixed or if the level of revenues can adjust endogenously. If it is also possible to reduce public spending, then the level of required public revenues can decline by more, which creates extra budgetary room for a further reduction in labor taxes, prompting an even larger increase in employment and a lower reduction in formal-sector after-tax income; in fact, the

²Bovenberg and van der Ploeg (1998a), Koskela and Schob (1999), Bovenberg (1995), Bovenberg and van der Ploeg (1998b).

after-tax wage of formal workers increases in this case.

Third, I evaluate the welfare implications of two environmental tax reforms under a taxation scheme that gives rise to a double dividend³, and under the assumption of either fixed or varying public spending. Public spending is assumed to affect households' utility. I find that a given environmental tax policy reduces overall social welfare and the utility of each group of workers in the economy. The equivalent variation of a given energy tax reform is lower when public spending varies endogenously compared to when public spending is fixed, even though the former policy has a smaller negative impact on household incomes.

Finally, sensitivity analysis also reveals that even though a double dividend occurs in the model at the expense of private-sector after-tax income, especially of those who are on state benefits, this result depends critically on the expenditure share of energy when formal sector production is modeled with a standard Cobb-Douglas function and a revenue-neutral green tax reform. Intuitively, with a smaller expenditure share of energy, a decline in energy demand due to higher energy taxes reduces costs, or equivalently results in a smaller tax burden.

These findings thus provide guidance to economists trying to garner support for the implementation of environmental tax policies in developing countries. The model suggests that policymakers in developing countries hoping to improve the labor market effects of environmental policies through lower public spending will likely be unsuccessful, as public services are important determinants of households' well-being in those countries. These results should, however, be seen as highlighting this trade-off when implementing complementary policies aimed at improving the labor market effects of green tax reforms, rather than providing conclusive proof of the incompatibility of green tax reforms with development and poverty alleviation policies in less developed countries. The model abstracts from studying alternative ways of reducing the tax burden on labor (which are beyond the scope of the current paper), which could be potentially more acceptable for economic and political reasons. The results also emphasize the importance of modeling the features relevant for developing countries when assessing consequences of environmental tax reforms in those countries.

More broadly, the results show that the context in which environmental taxation is introduced and the package of complementary reform measures are extremely important, given developing countries' emphasis on the equity and distributional aspects of green policies. Developing countries are the most vulnerable to climate change and resource depletion, and therefore need to embrace policies that help to stimulate economic growth and to promote environmental sustainability, including environmental fiscal reforms. Specific green growth instruments should be identified and used according to the context. This paper contributes to this policy analysis by studying the implications of environmental fiscal reforms, accompanied with reduction in public spending, for job creation and social welfare.

The rest of the paper is organized as follows. Section 2 presents the search and matching model of an economy with an informal sector and rural-urban migration. Section 3 outlines the parameterization of the model. Section 4 discusses results of the policy experiments. Section 5 evaluates the welfare effects of green tax reforms. Section 6 examines the sensitivity of these results to changes in the values of some parameters and functional form. Section 7 concludes.

³This indexation scheme shifts the tax burden from workers to the unemployed (Bovenberg and van der Ploeg (1998b), Koskela and Schob (1999)). An alternative condition under which environmental policy benefits employment is if the tax burden is shifted to capital owners or the owners of resources (see Bovenberg (1995) and Bovenberg (1999)).

2 Model

This section outlines the theoretical framework in which I conduct the analysis. The model is an extension of the general equilibrium model of Satchi and Temple (2009), with a large informal sector and scope for rural-urban migration, in an economy with a polluting production factor and environmental taxes.

The economy consists of two regions: urban and rural/agricultural, denoted by m and a respectively. The urban sector is characterized by search and matching frictions in the tradition of Pissarides (2000), which partitions the sector into informal/unregistered and formal/registered production activities. Workers allocate themselves between the two sectors via rural-urban migration. Once workers migrate from rural areas, they first enter the informal urban sector.

There are two types of firms: agricultural (rural) sector firms and registered urban-sector firms. Firms operating in rural areas produce goods for consumption in that region only and operate under perfect competition. The economy imports both energy and capital at given world prices, and both are inputs into registered production activities only⁴. In the informal sector, workers are assumed to be self-employed and engage in low-productivity labor-intensive tasks. Goods from formal and informal production activities are assumed to be perfect substitutes.

Throughout the paper, I use the term “unemployed” to describe people self-employed in the informal sector, and thus treat the fraction of informal sector workers in the urban labor force as the unemployment rate, u , so that the size of population normalized to 1 is decomposed into:

$$L_a + (1 - u)L_m + uL_m = 1 \quad (1)$$

where L_a and L_m are the sizes of agricultural and urban sectors, respectively. Consistent with the Harris-Todaro model, all workers are assumed to be risk-neutral. Finally, revenues collected from taxing energy and labor are used to provide general government goods and transfers to the unemployed.

2.1 Agricultural sector

The agricultural sector is modeled as subsistence agriculture, assuming that it does not use energy as an input into production, so capital and labor are the only production factors. As in Satchi and Temple (2009), agricultural capital, K_a , is interpreted as land. In this sector, each worker produces an output $g(k_a) = \frac{Y_a}{L_a}$, where Y_a is total agricultural production in the economy and k_a is the capital to labor ratio, defined as:

$$k_a = \frac{K_a}{L_a} \quad (2)$$

The worker is paid a wage w_a , and derives positive utility from living in a rural area, $\chi_a > 0$ ⁵. The agricultural sector is assumed to be perfectly competitive, which implies that:

$$w_a = g(k_a) - g'_k(k_a)k_a \quad (3)$$

where $g'_k(k_a) = r_a$ is the rental cost of capital in the agricultural sector.

⁴This is a simplification; Kuralbayeva (forthcoming) considers the case when the agricultural sector uses energy as a production input to model the presence of pervasive electricity subsidies in the agricultural sector.

⁵The labor force is homogeneous in terms of their preferences, so the parameter χ_a is the same for all workers. It is also conceivable that workers derive negative utility from living in a rural area, that is, $\chi_a < 0$. In that situation, the wage rate in the agricultural sector must be high enough to attract labor from urban areas in order to equate the returns on working in the rural area and working in the urban area informal sector, as will be discussed in Section 2.3 below.

2.2 The urban labor market

Urban sector goods can be produced from either formal or informal activities. Labor market search-and-matching frictions form the distinction between the production activities of formal goods and informal goods.

2.2.1 The labor market

In formal labor markets, a constant-returns-to-scale matching function M_t determines the number of new matches between job searchers and vacancies:

$$M_t = m(suL_m, vL_m, M) = M(suL_m)^\gamma (vL_m)^{1-\gamma} \quad (4)$$

where uL_m denotes the number of unemployed workers, s is the average search intensity, vL_m is the number of open vacancies, and M denotes matching efficiency. Using linear homogeneity of the matching function, it is possible to express contact rates for firms and workers as a function of a single variable θ , defined as:

$$\theta = \frac{v}{su} \quad (5)$$

which measures the labor market tightness. Consequently, the probability of one vacancy being filled is:

$$q \equiv \frac{M_t}{vL_m} = M \left(\frac{su}{v} \right)^\gamma = M\theta^{-\gamma} \quad (6)$$

and $1/q$ is the expected duration of a vacancy. Note that $q(\theta)$ is a decreasing function of θ , and I define the elasticity of q with respect to θ as $\varepsilon_\theta \equiv -q'(\theta)\theta/q > 0$. Each match between a worker and firm in the formal sector is assumed to be destroyed by an exogenous Poisson rate λ , and the law of motion for the number of unemployed satisfies the following condition:

$$u\dot{L}_M = L_m(\lambda(1-u) - su\theta q(\theta)) \quad (7)$$

where $L_m\lambda(1-u)$ is the number of separations and $L_m su\theta q(\theta)$ is the number of hires. In the steady state, the inflows and outflows of employment in the informal sector must balance:

$$\lambda(1-u) = su\theta q(\theta) \quad (8)$$

and this determines the relationship between the unemployment rate and the rate of vacancies (labor market tightness) i.e. the Beveridge curve.

2.2.2 The worker's expected gains

In the informal sector, each worker receives $z+b-\sigma(s;z)$, where z denotes the labor productivity (output) of each worker⁶, b denotes unemployment benefits, and $\sigma(s;z)$ represents formal job search costs, which depend on search intensity s and labor productivity z . I consider different arrangements concerning the taxation of unemployment benefits and characteristics of the informal labor market by discussing specifications of b and z in Section 2.2.5.

⁶This is a simple specification, which abstracts from modeling how various production factors (energy, capital, and labor) are used in the informal sector production process. Thus we cannot examine the effects of tax policy that operate through the relative energy intensities of the formal sectors and the informal sector. However, those effects could be important in reducing the costs of energy tax reforms through an expansion of the tax base (see, Bento et al. (2012)).

I use U and W to denote the value to the worker of being unemployed (and searching for a formal job) and being employed on a formal job, respectively. As the ex-post value of working in formal jobs is the highest, there is an incentive to search for jobs in the formal segment of the urban sector. Informal sector workers decide how actively they search for a formal sector job. A worker i , who searches for a job with intensity s_i , when all other workers search with the same level of intensity s , has a matching rate proportional to his relative search intensity s_i/s :

$$\bar{q}_i = \frac{s_i}{suL_m} m(suL_m, vL_m) = s_i q \theta = s_i M \theta^{1-\gamma} \quad (9)$$

Following Satchi and Temple (2009), the optimal level of search intensity for worker i is determined by equating the worker's marginal search costs (σ_{s_i}) with the expected benefits $d\bar{q}_i/ds_i(W - U_i)$ of job search, and then by imposing symmetry:

$$\sigma'_s(s; z) = \theta q(W - U) \quad (10)$$

while every job searcher finds a job at rate $sq\theta$.

The expected utilities of being unemployed and employed at a formal job can be defined as follows:

$$rU = z + b - \sigma + sq\theta(W - U) \quad (11)$$

$$rW = w_m + \lambda(U - W + P), \quad (12)$$

where w_m is the formal-sector wage and P is the severance payment paid by the firm to a departing employee.

2.2.3 Firms and labor demand

I use V and J to denote the value to the firm of holding a vacancy and a filled job, respectively. I assume that firms pay a flow cost c to post a vacancy. Once the vacancy is filled, each firm employs one worker who is paid the wage w_m , rents capital k_m from international capital markets, and imports the polluting production factor energy e_m at an exogenously given price p_E . Firms are liable to energy and payroll taxes. Matches between workers and firms break at an exogenous Poisson rate λ , at which point the worker returns to the informal sector. The firm makes a severance payment P to the departing employee, which is an important feature of labor markets in developing countries such as Mexico.

Each operating firm with its one employee thus produces the output $A_m f(k_m, e_m)$, where A_m is a TFP parameter and $f(k_m, e_m)$ is the intensive form of production technology, with capital (k_m) and energy utilized per worker (e_m), so that:

$$rJ = A_m f(k_m, e_m) - (1 + \tau_L)w_m - r_m k_m - p_E(1 + \tau_{e,m})e_m - \lambda(J + P), \quad (13)$$

$$rV = -c + q(J - V), \quad (14)$$

The first-order conditions for the capital-labor ratio and energy-labor ratio are:

$$A_m f'_k(k_m, e_m) = r_m; A_m f'_e(k_m, e_m) = p_E(1 + \tau_{e,m}) \quad (15)$$

which imply that:

$$rJ = y(k_m, e_m) - (1 + \tau_L)w_m - \lambda(J + P) \quad (16)$$

where labor productivity is defined as:

$$y(k_m, e_m) \equiv A_m f(k_m, e_m) - r_m k_m - p_E(1 + \tau_{e,m})e_m.$$

Free entry into the creation of vacancies implies $V = 0$, that is:

$$J = \frac{c}{q} \quad (17)$$

which states that in equilibrium, the expected profit from a job has to cover the expected cost of a vacancy. By combining equations (16) and (17) to eliminate J , and assuming that hiring costs are a fixed proportion ν of the producer wage in the formal sector, $c = \nu(1 + \tau_L)w_m$, I can obtain the following expression:

$$y(k_m, e_m) = (1 + \tau_L)w_m \left[1 + (\lambda + r)\frac{\nu}{q} \right] + \lambda P \quad (18)$$

which states that labor productivity equals total labor costs, including wage costs, the expected capitalized value of its hiring costs, and expected severance payments.

2.2.4 Wage determination

Search and matching frictions in the formal urban sector imply that each match gives rise to a surplus that is shared between the firm and its worker through a generalized Nash bargain, which determines wages in formal urban sector according to⁷:

$$w_m \in \arg \max_{w_m} (W - U)^\beta (J - V)^{1-\beta} \quad (19)$$

where β and $1 - \beta$ correspond respectively to the workers' and firms' bargaining strength. The first-order condition for this problem can be written as:

$$(1 - \beta)(1 + \tau_L)(W - U) = \beta J \quad (20)$$

If workers dominate the bargaining process i.e. $\beta \rightarrow 1$, it is clear from equation (20) that their value to the firm, J , will be equal to zero and the marginal product of labor equals the costs of labor (including expected severance pay), $(1 + \tau_L)w_m + \lambda P = y(k_m, e_m)$. If, however, the firm holds the entirety of the bargaining power i.e. $\beta = 0$, then $W = U$. This simply means that formal sector wages equal workers' reservation wage, $w_m + \lambda P = z + b - \sigma$.

Using (11), (12), and (17) to eliminate $W - U$ and J respectively from (20), I can obtain the following expression for the wage rate:

$$\frac{w_m - (z + b - \sigma)}{w_m} + \frac{\lambda P}{w_m} = \frac{\beta}{1 - \beta} \nu \left(\frac{r + \lambda}{q} + s\theta \right). \quad (21)$$

This expression shows that the higher the bargaining power of workers (β), the larger is formal sector income (including expected severance pay). A higher interest rate (r), a larger separation rate (λ), or a tighter labor market (θ) raise the rents from a job match and thus raise the wage.

Using (10), (17), and (20), I can rewrite the equation that determines the optimal level of search intensity as:

$$\sigma'_s = \frac{\beta}{1 - \beta} \theta \nu w_m. \quad (22)$$

⁷This type of solution, under some conditions, may be justified by application of strategic bargaining theory; see Binmore et al. (1986) and Rogerson et al. (2005).

2.2.5 Unemployment benefits and informal sector labor productivity

As discussed in the introduction, one of the conditions for the double dividend in employment to arise is that the tax burden is shifted from workers to recipients of income transfers. This condition critically depends on how green tax reforms affect unemployment benefits (the outside option of employees in the Nash bargaining process) (see Koskela and Schob (1999) and Bovenberg and van der Ploeg (1998b)). In particular, if unemployment benefits are indexed to consumer prices, then the purchasing power of the unemployed is fixed in real terms. In this situation, the environmental tax reform cannot shift the tax burden from workers to the unemployed, reducing the scope for a double dividend. If, however, the ratio of unemployment compensation to wages is fixed, then the unemployed also share the burden of carbon taxation. By shifting the tax burden away from workers towards the unemployed, employment may expand⁸.

Koskela and Schob (1999) illustrates these insights in a model of wage-bargaining between unions and employers and with environmental taxes on the consumption of ‘dirty’ goods, while Bovenberg and van der Ploeg (1998b) employ a job search framework and consider environmental taxes in production. The latter also allows for the unemployed to derive (untaxed) income from informal activities. Both papers demonstrate that the potential for double dividend critically depends on the manner in which unemployment benefits are linked to wages and prices. Since the focus of the paper is to analyze how the reduction in public consumption can moderate the costs of green tax reforms on real after-tax private income under conditions that a double dividend arises, the theoretical framework must include elements that cause income in unemployment to be imperfectly linked to the wage level.

As in Bovenberg and van der Ploeg (1998b), I consider environmental taxes in production and model the informal sector, and choose similar indexation schemes for unemployment income, summarized in Cases A and C:

Case A Unemployment benefits are fixed at a given level ($b = \bar{b}$). I similarly assume that workers earn a fixed amount of income by engaging in informal activities ($z = \bar{z}$). Since the set up of this model is static and the price of consumption goods is normalized to unity, under this tax regime, the purchasing power of unemployed is fixed in real terms.

Case C Unemployment benefits are assumed to represent some fraction of formal-sector earnings such that $b = \pi_b w_m$ and $z = \pi_z (1 + \tau_L) w_m$. This indexation rule suggests that labor taxes are evaded in the informal sector, but energy taxes are not. This is a plausible assumption, since pre-existing taxes, such as taxes on labor, tend to be easier to evade than certain forms of environmental taxes, such as carbon taxes or taxes on energy (see, e.g., Liu (2013)).

In addition, I introduce case B, an intermediate case between cases A and C:

Case B I slightly modify the rule of case C, relaxing the assumption that labor taxes are evaded in the informal sector and assuming that $z = \pi_z w_m$, while unemployment benefits are linked to wages ($b = \pi_b w_m$,

⁸The importance of this benefit regime for the effects of generic (non-green) tax reform on employment has been also demonstrated, for instance, by Pissarides (1998). He has found that the effects of employment tax cuts are mainly on wages if the ratio of unemployment compensation to wages is fixed, while there are substantial employment effects if unemployment compensation is fixed in real terms.

as in Case C). This indexation rule implies that the income of the unemployed moves in line with that of employed workers.

There are potentially many other indexation schemes (see Koskela and Schob (1999) or Bovenberg and van der Ploeg (1994)), with environmental (or other) tax reforms exerting different impacts on income from unemployment. The chosen cases A and C represent two extreme and opposing cases when the green tax reform cannot affect unemployment income or can shift the brunt of the tax burden on the unemployed, respectively. These cases are also supported by stylized facts on benefit indexation schemes currently present in some Latin American countries, as discussed in Section 2.2.6.

Finally, in contrast to Bovenberg and van der Ploeg (1998b), I simulate the model, which enables me to perform extensive quantitative analysis. Bovenberg and van der Ploeg (1998b) focus on a revenue-neutral tax policy, while I focus on environmental tax policies that do not have to be revenue-neutral but instead allow public revenues and public consumption to change in response to a tax reform. I discuss this further when introducing the government budget constraint in Section 2.4.

2.2.6 Unemployment insurance systems in Latin American countries: a short overview

In this section, I provide a short overview of the unemployment insurance schemes in a selected group of Latin American countries⁹, which is summarized in Table 1.

In most countries, unemployment benefits are tied to earnings, with minimum and maximum thresholds. For instance, in Chile, benefits are decreasing fraction of remuneration, with 50% of salary being paid in the first month, 45% in the second and so on. A similar descending pattern is also in place in Argentina and Uruguay. In Ecuador, the unemployed receive a one-off lump-sum payment upon leaving employment.

Mexico, on the other hand, does not have a nationwide unemployment insurance scheme, but there is still a social security system¹⁰ in place that allows registered workers to withdraw a maximum of 30 days worth of their pension savings from their individual account once every 5 years, in the event of unemployment. Furthermore, temporary employment programs are in place for workers from rural areas (with benefits being set at 99% of the local minimum wage), and in order to deal with the weak coverage of the official social security system (less than 50% of workers), a program named Seguro Popular (SP) was introduced in 2002, providing workers with health but not employment benefits. In addition, Mexico City launched its own unemployment benefit scheme in 2007 (Programa seguro de desempleo del distrito federal). Under this scheme, benefits are restricted to 6 months, and the monthly benefit is worth of 30 days of minimum wage. The existing Mexican programs described above have features that resemble flat-rate systems.

Overall, the stylized facts presented in Table 1 provide evidence for and support the flat-rate system and earnings-related indexation scheme of benefits¹¹ which characterize the cases outlined in the previous section.

⁹Some forms of unemployment insurance (UI) currently exist in a handful of developing countries (see Vodopivec (2013), Velasquez (2010) and Gerard and Gonzaga (2012)), most of them Latin American countries.

¹⁰See: <http://www.socialsecurityextension.org/gimi/gess/ShowTheme.do?tid=2667>.

¹¹It is important to note that even though in some countries, unemployment benefits are earnings-related and descending depending on the duration of unemployment, I do not model such unemployment insurance schemes. However, the labor economics literature has hazard rate models that deal with these types of unemployment schemes.

2.3 Urban-rural migration

There is scope for migration between urban and rural areas, and once workers migrate from rural areas, they initially enter the informal sector. Migration involves a cost $\phi_f|f|$, where ϕ_f represents the congestion effect caused by migration intensity¹², and f represents migration flows from the agricultural sector to the cities (a negative sign would imply a migration flow in the opposite direction). The migration equilibrium condition is defined as follows:

$$w_a + \chi_a + r\phi_f f = rU \quad (23)$$

and it states that the discounted value of being employed in the agricultural sector must be equal to the workers' expected utility from entering the informal sector. The steady-state is characterized by zero migration flows ($f = 0$) and workers are indifferent between staying in agriculture and the informal urban sector:

$$w_a + \chi_a = z + b + \sigma[\varepsilon_\sigma - 1] \quad (24)$$

where $\varepsilon_\sigma = s\sigma'(s)/\sigma$ is the elasticity of search costs with respect to s . The equation states that an increase in unemployment benefits and informal-sector income attracts more labor from the agricultural sector to the informal sector, thus driving up agricultural-sector wages. An increase in search intensity naturally entails a rise in search costs, but also increases the probability of finding a job in the formal sector. Thus, when the expected benefits from search ($\sigma\varepsilon_\sigma = s\sigma'(s)$) exceed the costs ($\sigma(s)$), workers migrate from the agricultural to the informal sector, causing an increase in rural wages.

2.4 The government's budget constraint

The government's main commitments are the provision of public goods G and transfers to the unemployed:

$$G + uL_m b = \tau_L w_m (1 - u)L_m \left(1 + \nu \frac{r + \lambda}{q}\right) + \tau_{e,m} p_E e_m (1 - u)L_m \quad (25)$$

Goods produced in the formal and informal sectors are assumed to be perfectly substitutable¹³, and government consumption is restricted to these types of goods. Government revenue includes revenues from taxing energy in the formal sector $\tau_{e,m} p_E e_m (1 - u)L_m$, total payroll taxes paid by employees in the formal sector, $\tau_L w_m (1 - u)L_m$, and taxes on capitalized recruitment costs, $\tau_L w_m (1 - u)L_m \nu (r + \lambda)/q$.

I examine the effects of green tax policy on labor market outcomes by solving the parametrized model numerically and performing policy experiments along two dimensions. In one dimension, as outlined above, there are the various cases of taxation regimes. In the second dimension, there are different modeling assumptions that can be made about government expenditure, G . First, I assume that government expenditure, defined as a fraction of GDP ($G = \psi Y$, $Y = Y_a + Y_m$), varies endogenously. Second, I also consider the case when the level of government expenditure is fixed at its baseline level, i.e. $G = \bar{G}$. Finally, I examine a revenue-neutral policy under which the government budget constraint will be replaced by two equations:

$$G + uL_m b = \Upsilon \quad (26)$$

¹²Migration from rural to urban areas makes it more difficult for workers in the informal sector to find formal-sector jobs, undermining the relative attractiveness of being in the informal urban sector.

¹³This is a common assumption introduced in the literature to model the coexistence of both formal and informal sectors, see Pigott and Whalley (2001), Keen (2008), and Bento et al. (2012).

and

$$\Upsilon = \tau_L w_m (1 - u) L_m \left(1 + \nu \frac{r + \lambda}{q} \right) + \tau_{e,m} p_E e_m (1 - u) L_m, \quad (27)$$

where Υ is total government revenue in the baseline case with energy taxes at $\tau_{e,m} = 0.15$.

3 Parameterization

Since this model is designed to examine the effects of environmental policies on labor market outcomes, a primary target of the calibration is to produce reasonable figures for labor market characteristics such as the size of the informal sector, agricultural employment, and average employment duration¹⁴. I calibrate the parameter values using the latest available official data and values similar to existing studies that analyze labor market policies in Mexico (or Latin American countries which share many similar labor characteristics with Mexico). The baseline parameter values are summarized in Table 2; Table 3 reports the characteristics of the labor market implied by the theoretical model as well as the corresponding values from Mexican data. The time period is assumed to be one month.

3.1 Matching and labor market parameters

The matching technology is Cobb-Douglas and satisfies $m(sv, u) = M(sv)^\gamma v^{1-\gamma}$. I set the value of γ equal to 0.5, which is commonly accepted value in the literature¹⁵. I set the values of M and s at 0.1 and 0.5 respectively in order to yield a plausible value for the duration of employment (see Table 3). I assume β to be equal to 0.5, as it is again accepted by most of the literature¹⁶. The value of parameter ν in the vacancy posting cost ($c = \nu(1 + \tau_L)w_m$) is set at 0.4¹⁷. Following Satchi and Temple (2009), I assume that the average severance payment P is four times the wage, which along with the assumption that $P = z_P(1 + \tau_L)w_m$, yields a value of $z_p = 3.36$.

I assume the annual interest rates r and r_m to be equal to 4%, which is the value used in the literature (Satchi and Temple (2009), Albrecht et al. (2009)). The monthly job separation rate, λ , is chosen to be at 0.04, as in Gerard and Gonzaga (2012), who base their estimate on monthly data for Brazil. In comparison, Satchi and Temple (2009), using quarterly estimates from Gong and van Soest (2002), calibrate λ at 0.06. I decide to set λ to 0.04, which allows me to match the labor data statistics of Mexico better. The parameterization yields an “unemployment” rate (the size of the informal sector as a share of non-agricultural employment) of 30.63%. This number is very close to the official estimate of 34.1% for Mexico (2009 Q2)¹⁸.

3.2 Search intensity, labor income and government

Following Satchi and Temple (2009), the cost of search intensity function is defined as follows:

$$\sigma(s) = \Pi z s^\phi. \quad (28)$$

¹⁴This section draws heavily on a corresponding one in Kuralbayeva (forthcoming)

¹⁵See Pissarides (1998), Satchi and Temple (2009), and Zenou (2008).

¹⁶See, e.g., Mortensen and Pissarides (1994), Zenou (2008), Albrecht et al. (2009), and Pissarides (1998).

¹⁷For comparison, Satchi and Temple (2009) set the ratio c/w_m equal to 0.4.

¹⁸This share also includes those who have a formal job. Formal employment in the informal sector, however, only represents a very small fraction of non-agricultural employment. For illustration, I also compute informal-sector employment as a share of non-agricultural employment, using data (ILO (2012)) on the number of people in informal employment and the number of people in informal employment outside the informal sector. The estimate is 33.5%.

I set the value of ϕ at 2 (as in Satchi and Temple (2009)), and choose the value of parameter Π to generate plausible values for both informal-sector productivity and the total income of the unemployed. The agricultural employment share, L_a , is chosen to be equal to 0.13¹⁹, which matches the annual data for Mexico in 2010. The value of χ_a is then inferred from the model's migration equation (24).

I assume the payroll tax rate τ_L to be equal to 0.25, since 2013 OECD data on the average labor income tax (tax wedge) faced by Mexican workers suggests 19.0% and an average compulsory payment wedge of 26.9%²⁰. At the same time, payroll taxes may make up a maximum 35% of the payroll in Mexico (see Handbook (2012)). The values for the payroll tax rate used in the literature differ considerably - for instance Satchi and Temple (2009) use a value of 0.1, whilst Albrecht et al. (2009) use a value of 0.5. Since there is no consensus in the literature, I have chosen a payroll tax rate that is in line with recent data on Mexico. I assume the baseline energy tax, $\tau_{e,m}$, to be equal to 0.15, which together with other parameters allow me to match the share of public consumption in GDP quite well. Specifically, I assume that government spending accounts for 10% of GDP (i.e., $\psi = 0.1$), which is consistent with the empirical evidence for Mexico. The average share of general government final consumption expenditure in GDP from 2004-2008 is 10%, which is similar to the 11.4% share over the past few decades (1991-2013)²¹.

3.3 Production functions

The baseline production technologies in the formal and agricultural sectors are Cobb-Douglas and satisfy:

$$Y_m = A_m K_m^{\alpha_1} E_m^{1-\alpha_1-\alpha_2} ((1-u)L_m)^{\alpha_2}; \quad Y_a = A_a K_a^{\gamma_1} L_a^{1-\gamma_1}; \quad (29)$$

which in intensive forms are respectively defined as follows:

$$A_m f(k_m, e_m) = A_m k_m^{\alpha_1} e_m^{1-\alpha_1-\alpha_2}; \quad g(k_a) = A_a k_a^{\gamma_1} \quad (30)$$

Cobb-Douglas technology has been used widely (e.g. in Golosov et al. (2014), Barrage (2012), and references therein), and, as argued by Hassler et al. (2012), seems to be a reasonable representation of energy input use for a longer time horizon. I focus on the case of an open capital account for developing countries, assuming that the economy is open to international capital flows so that the return to capital is equal to the world interest rate. In addition, given that the price of energy is determined internationally by world markets, equations (15) imply that both k_m and e_m are exogenously given. This version of the model can be seen as capturing long-run adjustment, and thus the Cobb-Douglas specification is consistent with this assumption.

I test the sensitivity of the results to a CES production function specification, which is considered to be a better representation of energy demand in the short-and-medium term than a Cobb-Douglas production function (see, e.g. Hassler et al. (2012)), assuming instead that formal sector production is given by:

$$Y_t = [(1-\gamma_2)[A_t K_t^\alpha ((1-u)L_t)^{1-\alpha}]^{\frac{\varepsilon-1}{\varepsilon}} + \gamma_2 [A_t^E E_t]^{\frac{\varepsilon-1}{\varepsilon}}]^{\frac{\varepsilon}{\varepsilon-1}} \quad (31)$$

¹⁹Please note that given this parameterization, the agricultural sector is a proxy for the rural area and thus in the paper, the terms agricultural sector and rural area will be used interchangeably.

²⁰See <http://www.oecd.org/ctp/tax-policy/taxingwages-mexico.htm>. The average compulsory payment wedge measures the payroll taxes and non-tax compulsory payments.

²¹General government final consumption expenditure (% of GDP) (NE.CON.GOV.T.ZS) from the World Bank World Development Indicators includes all government current expenditures for purchases of goods and services (including compensation of employees). It also includes most expenditures on national defense and security, but excludes government military expenditures that are part of government capital formation.

where L is labor, A_t the capital/labor-augmenting technology (later called A_m), A^E the fossil-energy-augmenting technology, ϵ the elasticity of substitution between capital/labor and fossil energy, and γ_2 is a share parameter.

For the baseline Cobb-Douglas technology specification (29), I set the values of the parameters as $\alpha_1 = 0.269$, $\alpha_2 = 0.5$, and $\gamma_1 = 0.63$ (as in Satchi and Temple (2009)). For the nested CES production function (31), I set the values of the parameters of the production function as $\alpha = 0.3$, $\epsilon = 0.05^{22}$, and $\gamma_2 = 0.1^{23}$. The values of the exogenous price of energy and augmenting technology are chosen to match the labor data statistics, so that the baseline values for both production function specifications are the same.

These shares give a baseline share of energy costs in total production of 23.1%. For comparison, a value of 40.7% is an estimate based on a Cobb-Douglas specification used in an analysis of the energy-saving effects of technological progress in Chinese industry, which is characterized by high energy intensity (see Yuan et al. (2009)). The estimates of 35% and 17% are the values of energy input per unit of value added in non-metallic mineral products and paper products respectively across developing countries (see Upadhyaya (2010)). Much lower values for the expenditure share of energy have also been used in recent macroeconomic models of climate change (see Golosov et al. (2014) or Barrage (2012)) of $1 - \alpha_1 - \alpha_2 = 0.03$. Since, the focus of this analysis is on developing countries, I start with a higher energy intensity of production than used in those studies and perform sensitivity analyses using other values of $1 - \alpha_1 - \alpha_2$. I demonstrate that the key results of the paper remain robust to changes in the values of energy intensity.

As K_a represents a fixed factor in agricultural production, I can normalize its value to one without loss of generality. Thus, given the knowledge of L_a , this pins down the value of land per worker in the rural sector, $k_a = 1/L_a$. In choosing the values of productivity parameters A_m and A_a , I draw on a recent study by Gollin et al. (2014), who demonstrate that by adjusting for different factors such as human capital per worker, the productivity gap between agricultural and non-agricultural sectors in developing countries, measured as value added per worker, could be estimated at around 2. Accordingly, by normalizing the agricultural-sector productivity to one, $A_a=1$, I set the value of A_m at 2.

3.4 Other parameters

I have verified that the conditions of the model (1) $w_m + \lambda P > z + b - \sigma$ and (2) $P < w_m/\lambda$ hold under this parametrization. The first condition states that workers will only engage in job search if it is worthwhile, that is, the expected return from a formal job is greater than the return from being in the informal sector and searching for a formal job. The second condition implies that the (expected) severance payment P accounts for less than half of expected labor income from employment.

To perform welfare analysis, the households's utility function is defined as follows:

$$\mathcal{U}(I) = c_A^{\alpha_A} c_M^{\alpha_M} G^{\vartheta} \tag{32}$$

where $\alpha_A + \alpha_M = 1$. I assume $\vartheta = 0.1$, which is below the values of 0.4 and 0.2 considered in Ganelli and

²²The value of the elasticity $\epsilon = 0.05$ (or below), as shown by Hassler et al. (2012), implies the sensible energy-saving and capital-labor saving technology series. Their estimates also suggest that these technology trends are positive and of very similar magnitude, so I therefore set $A = A^E$.

²³Empirical estimates of the share of energy in production (γ_2) vary by industry. For example, Dissou et al. (2012) find that the value of γ_2 varies between 0.024 (transportation equipment) and 0.186 (primary metals). I set the value of γ_2 in the range of these estimates, close to estimates of the energy share in non-metal mineral products or chemicals.

Tervala (2007) and Sims and Wolff (2014) respectively²⁴. I set the value of α_A at 0.3.

4 Discussion of the results

4.1 Policy experiments

For clarity, I again briefly outline the experiment specifications I conduct in the paper, which have been explained in the previous sections. First, I examine the effects of green tax reforms when the total income of the unemployed is fixed in real terms (Case A: $b = \bar{b}$, $z = \bar{z}$). Second, I assume that the income of the unemployed is a fixed proportion of after-tax wages (Case B: $b = \pi_b w_m$, $z = \pi_z w_m$). Third, I study the case where the income of the unemployed is fixed, but labor taxes are evaded in the informal sector (Case C: $b = \pi_b w_m$, $z = \pi_z(1 + \tau_L)w_m$).

Cases A and B are analyzed under the assumption that the provision of public goods is constant ($G = \bar{G}$). Case C is considered under three assumptions about public expenditure: (1) fixed public spending ($G = \bar{G}$), (2) flexible (endogenous) public spending ($G = \psi Y$, $Y = Y_a + Y_m$), and (3) a revenue-neutral tax reform. Case C is the type of unemployment indexation rule under which the environmental tax policy can affect the income of the unemployed and can shift the tax burden from the workers to unemployed, so the double dividend can arise. By making different assumptions about public spending, I see how changes in public consumption impact private-sector employment and after-tax income.

4.2 Green tax policies: All policy scenarios

In this section, I distill the results and key insights from all five policy experiments outlined in this paper. I study the effects of an environmental tax policy that doubles the value of the energy tax from its baseline value of $\tau_{e,m} = 0.15$ to $\tau_{e,m} = 0.3$. An increase in energy taxes affects the economy through two channels. First, it decreases energy demand, which in turn decreases the energy tax base. Second, lower energy demand reduces labor productivity and thus labor demand. If the government needs to maintain overall tax revenues, the erosion of the energy tax base prevents the government from reducing labor taxes sufficiently to offset these adverse effects of higher energy taxes on labor productivity, as green taxes have a narrower tax base than labor taxes. Since a reduction in payroll taxes does not fully offset the adverse effects of the pollution tax, the overall tax burden on labor tends to rise. The higher average tax burden on labor generally reduces private-sector after-tax income and raises the labor costs (per unit of output) for firms, and thus tends to reduce labor demand and employment. By lowering the tax burden on labor, or as discussed in this paper, by shifting the tax burden on the unemployed, it is possible to raise employment. However, such an outcome depends on the indexation scheme of income in unemployment, and the extent to which the after-tax income of all labor is reduced by the type of government expenditure policy, which I discuss below.

Table 4 summarizes the effects of an increase in energy taxes on key labor market characteristics, under different policy scenarios. Labor market characteristics include the unemployment rate (u), after-tax real income of the private sector (formal sector wage, w_m), income of the unemployed ($b + z$), rural sector wages (w_a), search efforts (s), and labor market tightness (θ). From this table we see that, for instance, the first green tax policy is associated with an increase in the unemployment rate of 0.75 percentage points, a 1.63%

²⁴In section 5 below I discuss how a higher value of ϑ affects the baseline results.

decline in after-tax wages, a 3.83% decrease in agricultural wages, and a decline in both search efforts and labor market tightness, while unemployment income is unaffected.

The table first demonstrates that a double dividend (a decline in the unemployment rate) occurs when the additional tax burden associated with higher carbon taxation is shifted onto the unemployed, as in the last three experiments. In the first policy experiment, the income of the unemployed remains unaffected by green tax policy. In turn, the tax burden of environmental protection is borne by workers in the remaining sectors of the economy (urban formal and agricultural), in terms of lower urban-sector employment and lower formal- and agricultural-sector income. Intuitively, as the outside option available to workers remains unaffected by green tax policy, this policy effectively raises the bargaining power of workers. Workers thus resist *large* cuts in after-tax wages, increasing labor costs and reducing formal-sector employment. A decrease in formal-sector employment is partially absorbed by the agricultural sector; the inflow of labor into rural areas pushes down agricultural-sector wages.

Under the second policy experiment, with indexation to after-tax wages, the environmental tax policy decreases the income of the unemployed, enabling the government to reduce taxes on labor by more than under the previous scenario, moderating the rise in labor costs and the reduction in employment. As the unemployed now bear some of the costs of a cleaner environment, the adjustment to the additional tax burden triggers a smaller decline in employment and in incomes of workers in both the formal and agricultural sectors compared to the first experiment. Both formal sector wages and the total income of the unemployed fall by the same amount (1.33%) when carbon taxes are increased from 15% to 30%. This reduction still proves to be insufficient for a double dividend to occur. Instead, green tax reforms only result in a lower unemployment rate when the additional tax burden due to higher energy taxes is shifted *more* onto the unemployed (the last three policy experiments).

The double dividend from the third policy experiment, which was not present in the second scenario, is due to the assumption in the former case that payroll taxes do not affect informal-sector income from self-employment. Under that assumption, a shift from labor taxes towards carbon taxes has a heavier impact on the income of the unemployed from informal activities. Since z represents 93% of the total income of the unemployed in the baseline case with $\tau_{e,m} = 0.15$, the environmental tax policy that replaces an explicit tax on labor with an implicit tax on labor (energy tax) results in a bigger fall in the income of the unemployed than under previous policy experiments, with their income falling by 4.58% compared with 1.33% under the previous policy experiment. A larger decline in the outside option weakens workers' bargaining power, which prompts them to accept lower wages. This boosts labor demand and reduces unemployment.

Finally, a comparison of the results across the third, fourth, and fifth policy experiments reveals that under the same tax regime, by varying the level of public revenues and government consumption, the impact of a green tax reform on labor markets can be improved: after-tax income in the private sector is highest under the last experiment. To explain the differences in these outcomes, I first note that when $\tau_{e,m} = 0.3$, the level of government revenues is 0.7386, 0.7307, and 0.7099, while the level of public spending is 0.6618, 0.6581, and 0.6321 for the third, fourth, and fifth policies respectively. Since labor taxes have a broad tax base, when government revenues are fixed there is less scope for reducing labor taxes under a revenue-neutral policy, compared to when public spending is fixed but the level of revenues can change. If, in addition, public spending can also be reduced, it is possible to create extra budgetary room for a further reduction in payroll taxes, inducing a further increase in formal-sector after-tax income.

It is also important to note that agricultural workers bear a large share of the tax burden in all but

the last policy experiment. The model supports policymakers' concerns of a potentially higher incidence of poverty in rural areas resulting from higher energy taxes in developing countries. Agricultural workers, as modeled, do not pay energy or labor taxes, but still bear part of the burden of green tax reform through urban-rural migration effects. Specifically, in the first two policy experiments, a decrease in formal sector employment is partially absorbed by the agricultural sector. This inflow of labor into rural areas pushes down wages in the agricultural sector not only in absolute terms, but also relative to formal sector wages, so that the incidence of poverty as measured by wages is higher. In the third and fourth green tax policies, a higher burden of taxation imposed on informal-sector workers prompts them to escape the brunt of taxation by searching for a formal-sector job or migrating into rural areas. Not all workers are able to find a job in the formal sector, so some of them migrate into rural areas, which again pushes wages down in the agricultural sector.

In the last environmental tax policy, compared with the third and fourth ones, the decline in the income of agricultural workers is moderated. This is because there is a larger reduction in unemployment than before, and as a result fewer people migrate into rural areas.

Green tax policies that put a heavier tax burden on the unemployed, as in the last three policy scenarios, could still be attractive from an efficiency viewpoint, because they improve labor market incentives through increased search effort, s . This search effort behavior introduces a wedge between labor market tightness θ and the vacancy rate v in such a way that these variables move in opposite directions. More specifically, since search intensity is endogenous, labor market tightness depends on two factors: the number of vacancies relative to the number of unemployed workers (v/u), and the average search intensity of the unemployed (s):

$$\theta = \frac{v}{u} \frac{1}{s} \quad (33)$$

In the first two policy experiments, the labor market is less tight because there are more unemployed workers relative to the number of vacancies in the economy, and θ follows the dynamics of the first channel v/u and falls. In contrast, in the last three policy scenarios, green taxation reduces payroll taxes and raises energy taxes, which imposes a heavier burden on the unemployed by reducing their income from self-employment, z . In these cases, the unemployed attempt to evade taxation by more actively seeking a formal-sector job, so that s rises. A higher search intensity makes it easier for employers to fill vacancies, and the labor market tightness, θ , by following the dynamics of search intensity s , falls. A less tight labor market reduces the expected duration of vacancies ($1/q(\theta)$) so that the green tax policy of the third and fourth scenarios creates larger incentives to enter the formal sector, inducing labor reallocation from the informal to the formal sector with a higher turnover rate than before.

4.3 Green tax policy reform and public consumption

As discussed above, by lowering the level of public consumption, it is possible to mitigate the overall tax burden on labor and to increase private-sector after-tax income. In this section, I further discuss the mechanisms and intuition behind this result. I consider different tax reforms, with increases in the energy tax rate ranging from 0.75 percentage points to 25 percentage points from the baseline value of 15%. In each case I start with the baseline tax level, vary the energy tax, and report the resulting steady-state results for the fourth and fifth policy scenarios in Table 5.

There are several key results that emerge from the table. First, labor taxes and unemployment are

reduced by more when G varies than when G is fixed. Second, changes in the income of the unemployed from self-employment are almost identical under these two policies. Third, when G varies, formal sector after-tax wages (w_m), agricultural-sector wages (w_a), and unemployment benefits (b) follow a hump-shaped pattern with respect to the changes in energy tax rate: they are initially rising but start falling when the energy tax rate reaches some level higher than the baseline value. Finally, there is a larger reduction in total government revenues under the final policy scenario.

These results can be explained as follows. On the fiscal side, the combination of the payroll tax (albeit lower than in the baseline) and higher carbon taxes reduces total government revenue under both policy scenarios. This is because a reduction in payroll taxes does not outweigh the costs associated with a decrease in energy demand (erosion in the energy tax base), or the costly reduction in labor productivity. Even though labor employment expands, it does not offset the reductions in labor taxes, so that overall tax revenues decline. This reflects the fact discussed earlier that labor taxes are a broader-based tax and thus are a more efficient way of raising revenues than energy taxes. Under the fourth policy experiment, a larger reduction in labor taxes results in even lower tax revenues, despite the higher after-tax wage of workers.

On the expenditure side, there are two components through which these revenue changes are transferred to the rest of the economy: transfers to the unemployed and the provision of public goods. Changes in spending on publicly provided goods, in particular a reduction in public consumption, allows for lower public revenues and thus lower payroll taxes.

If, however, G is fixed, transfers to the unemployed have to be lower, public revenues higher, or a mix of the two. As simulation results (Table 5) demonstrate, it is a combination of the two that occurs: unemployment benefits are lower and total public revenues are higher under the policy when G is fixed compared to when G varies. As mentioned earlier, public revenues are higher because there are smaller reductions in labor taxes. Specifically, a 5% increase of the energy tax from the baseline value²⁵ lowers the payroll tax by 1.45% when G is fixed compared to 1.75% when G varies, whilst an increase in the environmental levy of 10% from the baseline value enables a 2.86% decrease in labor taxes (compared to 3.47%).

The smaller cuts in labor taxes relative to increases in energy taxes under the third policy case is due to the erosion of the carbon tax base. As discussed at the start of Section 4.3, to provide a fixed amount of public goods, the government is unable to reduce taxes on labor sufficiently to offset the adverse effect of a higher energy tax on private-sector after-tax income. Drops in labor taxes are due to the revenue recycling of energy taxes, so to achieve “extra” reductions in marginal taxes on labor, the government needs to resort to additional policy measures. A reduction in public consumption is one of those measures, as a lower level of public spending requires less public revenues, and thus lower payroll taxes. Under the baseline parameterization, the reduction in public consumption results in higher cuts on labor taxes relative to increases in tax on energy, which results in higher real after-tax wages of formal-sector workers, as well as the hump-shaped responses of wages and unemployment benefits (see Table 5).

To explain these results, following Bovenberg and van der Ploeg (1998b) I first define the change in the tax burden on labor resulting from the green tax reform as:

$$\hat{\tau} \equiv \hat{\tau}_L + \frac{\omega_E}{\omega_L} \hat{\tau}_{e,m} \quad (34)$$

where changes in taxes are expressed as absolute deviations from their baseline values, and $\omega_L = 0.5$ and $\omega_E = 0.231$ stand for shares of labor and energy in formal production respectively. Labor taxes raise wage

²⁵From an energy tax of 15% to 15.75%.

costs directly, whereas energy taxes indirectly raise wage costs per unit of production by discouraging energy use and reducing labor productivity. Thus, equation (34) states that if the cut in payroll taxes is not sufficient to compensate for these adverse effects of energy taxes, green tax policy raises the overall tax burden, resulting in higher labor costs per unit of output, lower after-tax wages, or both. If a higher tax burden is reflected in higher labor costs, then such a tax policy is likely to discourage the demand for labor and thus reduce employment.

Given the parametrization of the model and these shares of labor and energy in the production process, it is clear that if a reduction in labor taxes exceeds an increase in energy taxes, the tax burden of the green tax reform is likely to be reduced. Specifically, the following condition must hold for the tax burden on real after-tax private income to be lowered:

$$-\frac{\hat{\tau}_L}{\hat{\tau}_E} > \frac{\omega_E}{\omega_L} = 0.462 \quad (35)$$

Based on (34), column (9) of Table 5 presents estimates of the changes in the overall tax burden associated with the green tax reform. “Extra” cuts in taxes on labor, stemming from a reduction in public consumption, reduce labor costs per unit of output sufficiently to outweigh energy costs per unit of output associated with a rise in energy tax from its baseline value. If, however, the green tax reform involves a relatively high increase in energy tax, for example 20 percentage points, a reduction in labor taxes is no longer sufficient to offset the adverse effects of energy taxes, and the average tax burden rises in the economy. This suggests that the tax burden follows a J-curve pattern, initially falling before rising.

I argue that this J-curve behavior of the change in the tax burden is conceptually similar to the Laffer curve (the non-monotonic relationship between tax rates and government revenues). Higher environmental taxes induce firms to reduce their demand for energy, eroding the carbon tax base. The erosion in this tax base is particularly high when energy tax rates exceed some higher level, so that a reduction in labor taxes through revenue-recycling and a reduction in public consumption is not sufficient to offset the adverse effects of higher energy taxes on labor productivity and energy demand, and the tax burden starts increasing. As the level of the environmental levy becomes too high (e.g. when $\tau_{e,m} = 0.35$), the government needs to provide labor subsidies to induce firms to create more vacancies and to increase employment.

This result also implies that a reduction in public expenditure as a complementary policy measure to reduce the tax burden of energy taxes in the economy has limited scope for improving outcomes. Reductions in public expenditure can increase the after-tax income of the private sector only up to a certain level of energy taxes, with further reductions in public consumption likely to be counterproductive.

Finally, reductions in public consumption not only translate into lower labor taxes, but also higher transfers to the unemployed. The higher incomes of both unemployed and formal-sector workers compared to the third policy case results in a larger urban area and lower rural-urban migration, which results in higher rural-sector income. The only income that remains almost the same under the third and fourth policy scenarios is income generated from informal-sector self-employment. This is because the first-order effects of lower public consumption are on overall tax revenue and unemployment benefits. The effect on income from informal activities is only through the effect on wages (w_m) and labor taxes, which are reduced by more in the last policy experiment; this is almost completely compensated by increases in after-tax wages.

Finally, these results depend critically on the value of the energy intensity of the formal sector production, and thus the values of ω_E and ω_L . Specifically, equation (34) also states that the overall effect of changes in both tax rates on the tax burden depends on the share of energy costs relative to labor costs in total

production (ω_E/ω_L). If, for instance, the share of energy is smaller relative to the share of labor, then a given cut in labor taxes lowers the overall tax burden, *ceteris paribus*. This also implies that a change in the tax burden can be negative (even without these “extra” cuts in tax on labor stemming from lower government expenditure). Column (9) of Table 5 for the case with fixed G illustrates this point: a green tax policy associated with increases of energy tax rate from the baseline value by 0.75 and 1.5 percentage points lowers the tax burden, but a lower tax burden does not translate into higher private-sector after-tax income, which is lower than under the baseline policy. This suggests that a reduction in the tax burden is a necessary but not sufficient condition for private-sector after-tax incomes to be improved through a green tax reform. In the next section, I investigate how this pattern continues with lower values of ω_E/ω_L , and the sensitivity of the J-curve behavior of the tax burden to different values of energy intensity.

5 Welfare analysis

Previous analysis revealed that green tax reforms can have positive employment effects and increase the income of both formal and informal workers in the urban sector. However, it was shown that such policies decrease agricultural-sector incomes, under both fixed and endogenous public spending. In this section, I investigate whether a green tax reform is welfare-improving.

So far, the analysis has neglected the effects of changes in public spending on the rest of the economy. It was shown that a green tax reform with endogenous public spending results in a higher employment rate, higher increases in urban-sector incomes, and a lower reduction in agricultural-sector income compared to a tax reform that keeps the level of public spending fixed. Clearly, if other economy-wide effects of a reduction in public spending are taken into consideration, the former tax reform may not actually be superior to the latter. As such, I account for the interaction of public spending with the rest of the economy by assuming that public spending affects households’ utility, which for a given value of household income I is defined as follows:

$$\mathcal{U}(I) = c_A^{\alpha_A} c_M^{\alpha_M} G^\theta \quad (36)$$

where $\alpha_A + \alpha_M = 1$, subject to the budget constraint²⁶:

$$p_A c_A + p_M c_M = I \quad (37)$$

Households’ demand functions are given by the following equations:

$$c_A = \frac{\alpha_A I}{p_A}; \quad c_M = \frac{\alpha_M I}{p_M} \quad (38)$$

A measure of social welfare is defined as the weighted utilities of all agents (formal sector workers, informal, and agricultural):

$$W = (1 - u)L_m \mathcal{U}(w_m + \lambda P) + uL_m \mathcal{U}(z + b) + L_a \mathcal{U}(w_a) \quad (39)$$

where \mathcal{U} is the households’ utility function. The weighted utilities is a valid representation of social welfare and has been used in previous studies²⁷. In addition to this social welfare measure, I compute equivalent

²⁶Market clearing conditions for agricultural goods and manufacturing goods determine the prices p_A and p_M . Please note that the baseline values at $\tau_{e,m}$ will be different for this version of the model with welfare analysis compared to the baseline values of the model considered earlier, because the model has been modified.

²⁷For instance, Schneider (1997) uses similar measure of social welfare when he examines the welfare effects of environmental tax reforms. In the macroeconomics literature, a similar weighted sum of per-period utilities is a typical specification of the policy objective, as in Horvath (2009) and Bilbiie (2016).

variation (EV) for each agent in the economy to see if there are any situations when the urban workers, who experience an increase in incomes, could potentially compensate the rural workers, who face declines in their incomes due to a green tax reform.

I evaluate the welfare costs of two environmental tax reforms that result in a double dividend, which are characterized by indexation scheme Case C, with fixed or endogenous public spending (fourth and fifth tax reforms as in Table 4). These results are demonstrated in Table 6, which presents how welfare and the utilities of each group of agents change for a given increase in the energy tax rate from its baseline value $\tau_{e,m} = 0.15$, as well as the equivalent variations of a given tax reform. Table 6 suggests that even though green tax reforms are associated with an increase in all urban-sector incomes, a given environmental tax policy reduces overall social welfare and the utility of each group of workers in the economy²⁸. Furthermore, comparing columns (2)-(4) across tables, we see that for a given level of environmental taxation, EV is lower when public spending varies endogenously compared to when public spending is fixed, even though the former policy is associated with a larger increase in incomes of both formal and informal workers, as discussed in the previous section. As discussed earlier, the larger increase in urban-area incomes is possible due to the reduction in public spending, which creates extra budgetary room. However, as I observe now, such reductions in public spending are not desirable for society in general, since these relatively larger increases in household incomes do not offset the reduction of public consumption, in terms of the well-being of workers.

6 Sensitivity analysis

6.1 Varying the energy intensity of the formal sector

In this section I investigate how the results presented in the previous section would change if I vary the value of the expenditure share of energy in production. The baseline expenditure share of energy is $\omega_E = 0.231$, which as discussed in Section 3, is consistent with some estimates of energy intensity in manufacturing subsectors across developing countries, but is much higher than the values of energy expenditure shares used in recent macroeconomic models of climate change, which have used a value of 0.04. To accommodate these differences in estimates, I consider values of the expenditure share of energy ($1 - \alpha_1 - \alpha_2 \equiv \omega_E$) of between 0.1 and 0.04, while keeping the value of α_1 , the expenditure share of capital, at its baseline value of 0.269. I start analyzing the effect of green tax reforms on the economy under three different values of energy share ω_E , by focusing on policy scenarios that assume the tax regime $b = \pi_b w_m$, $z = \pi_z(1 + \tau_L)w_m$, and $G = \bar{G}$. As before, I consider different tax regimes, with increases in the energy tax rate from its baseline value. In each case I start with the baseline value, vary the energy tax and report the resulting steady-state results for three alternative values of energy share in Table 7. Two key results emerge from the table. First, the J-curve pattern of the change in tax burden associated with implementing green tax reforms can also be observed for revenue-neutral tax reforms and not only for the case when $G = \psi Y$. Second, a reduction in the unemployment rate (the double dividend phenomenon) can be associated with increases in after-tax income of formal workers (w_m) and the unemployed, particularly if the production process is more labor-

²⁸The value of ϑ is crucial for welfare evaluation. The baseline value of ϑ is set at 0.1, while, as discussed earlier, the previous literature suggests higher values of this parameter, 0.2 and 0.4. As such, I perform sensitivity analysis with respect to a higher values of ϑ . The welfare costs of environmental tax policies depicted in Table 6 will be higher. Intuitively, and as could be expected, with higher values of ϑ public spending plays more important role for the households' utility and consequently the reduction in public spending will be associated with larger welfare losses.

intensive. Third, for a given rise in energy tax rate, cuts in payroll taxes are lower when production is less energy-intensive.

Intuitively, with a smaller share of energy in production, declines in energy demand due to higher energy taxes impose a smaller tax burden. At the same time, there are also fewer energy tax revenues that can be recycled to cut payroll taxes, which have a wider tax base. This suggests that labor taxes can be cut by less when the energy share is smaller. Despite smaller cuts in the labor tax rates, distortions associated with green tax reforms are smaller, so that lower labor taxes can offset reductions in the marginal product of labor due to lower energy demand. In such situations, the after-tax income of formal sector workers and unemployment benefits increases.

The key difference from previous studies that focus on developed countries is that the incidence of carbon taxes in the developing economy studied here is partly shifted to the rural sector through rural-urban migration effects. Thus, even though revenue-neutral green tax policies can be associated with higher after-tax incomes of both the employed in the formal sector and the unemployed, the income of rural workers is lower under all cases considered. This highlights the importance of modeling features relevant for developing countries, since ignoring rural-urban migration effects could potentially make green tax reforms appear Pareto improving, when in fact, the policy trade-off is that the agricultural sector is made worse off in terms of lower wages.

When endogenous changes in public expenditure accompany green tax reforms (under assumption $G = \psi Y$), the effect on both the unemployment rate (the double dividend) and private-sector after-tax income is magnified by a further reduction in labor tax rates due to lower public consumption. Similar detailed results are presented in Table 8, and changes in the tax burden are shown in Figure 1. As Figure 1 illustrates, a decrease in government spending G leads to a larger decline in the tax burden for a given change in energy tax rate (and a given energy share). I do not report a detailed table with the results under this policy scenario (available upon request), but the patterns and messages are similar as when public consumption is fixed²⁹.

6.2 Worker's bargaining power

As discussed earlier, the potential for a double dividend depends on how environmental taxation affects the income of the unemployed ($z + b$), and hence the outside option of formal-sector workers. Double dividends can arise if environmental regulation changes the outside option of formal-sector workers, so that some of the higher burden of energy taxation can be shifted onto the unemployed. These implications were considered in Case C (proportional unemployment insurance) in Section 2.2.5. If, however, environmental policy does not affect the income of the unemployed (for example under fixed unemployment insurance), then the double dividend does not occur.

Aside from the outside option, equilibrium wages of formal sector workers are also influenced by their bargaining power due to the Nash bargaining assumption. As mentioned in Section 2.2.4, a higher bargaining power means that formal sector workers can prevent larger cuts in after-tax wages, which raises labor costs and reduces formal sector employment. However, if firms dominate the bargaining process, formal sector wages will be closer to workers' reservation wages (informal sector wages), so labor costs and employment

²⁹Though with a larger decline in the tax burden, after-tax income of workers increases, whilst rural workers income fall by less. The reduction in the unemployment rate is also larger.

do not respond as much to energy taxation.

These results are demonstrated in Table 9, which presents the simulation results of the effects of environmental regulation on unemployment, for different values of workers' bargaining power: $\beta = 0.5$ (baseline), $\beta = 0.25$, and $\beta = 0.05$. Here, we assume proportional unemployment insurance (UI) in the core model with $\tau_a = 0.15$, so it is possible to shift the burden of energy taxation onto the unemployed. Table 9 suggests that there is a nonlinear relationship between the unemployment rate (u) and worker's bargaining power (β). Comparing columns (2) across tables, we see that for a given level of environmental taxation, unemployment initially falls when bargaining power falls to 0.25, but then rises when bargaining power decreases further to 0.05. A similar nonlinear pattern exists for formal-sector wages: comparing columns (4) across tables, we observe that higher bargaining power is initially associated with relatively higher formal sector wages ($\beta = 0.5$ vs $\beta = 0.25$), but when bargaining power decreases to 0.05, formal-sector wages become lower in relative terms. Columns (3) and (6) show the informal sector (reservation) wage which, as mentioned earlier, is closer to formal sector wages w_m when bargaining power is lower.

6.3 The elasticity of search costs to search intensity

In the baseline model, the parameter ϕ represents the search cost elasticity with respect to search efforts and is set to the value 2 as in Satchi and Temple (2009). The elasticity parameter ϕ affects migration decisions through two channels: an increase in search intensity raises search costs as well as the probability of finding a job. If ϕ is greater than 1, then the expected benefits from search, $s\sigma'(s)$, exceed the costs, $\sigma(s)$. Based on the equilibrium migration condition (24), workers will therefore prefer to stay in the city rather than migrating to rural areas.

The income of rural workers depends on the degree of urban-rural migration, so by varying the value of ϕ , we examine how the search cost elasticity affects the distribution of the higher energy tax burden on rural workers. We consider two alternative values: $\phi = 1.5$ and $\phi = 3$, assuming that energy taxes in the agricultural sector are fixed at the baseline value of 0.15 and that the UI scheme is proportional. Table 10 presents the results for different values of ϕ and demonstrates that lower values of ϕ are associated with a larger urban population and therefore a smaller rural population. The changing value of ϕ affects the income of the unemployed z and unemployment benefits b , which together with $\sigma[\varepsilon_\sigma - 1]$ influence urban-rural migration. Under the given parametrization, with larger returns to urban labour, workers tend to migrate to the city, which increases the income of agricultural workers.

6.4 Vacancy posting costs

Besides bargaining power and search costs, vacancy posting costs affect formal sector wages and the unemployment rate. Higher vacancy costs means that fewer vacancies are posted, which results in a higher unemployment rate. As discussed in Section 2.2.3, the flow cost c to post a vacancy depends on hiring costs ν , payroll taxes τ_L , and formal sector wages w_m : $c = \nu(1 + \tau_L)w_m$.

Table 11 presents the simulation results of the effects of environmental regulation on unemployment, for different vacancy posting costs: $\nu = 0.4$ (baseline), $\nu = 0.2$, and $\nu = 0.6$. For a given value of ν , an increase in environmental taxation results in more vacancies being posted (and a lower unemployment rate) because the fall in payroll taxes (column (1)) more than offset the increase in wages (column (3)). However, comparing columns (2) across tables shows that for a given level of environmental taxation, the direct increase in flow

costs due to an increase in ν leads to relatively higher unemployment, even though there are relatively more vacancies, as the search intensity of workers is lower (not shown in the table).

6.5 A nested CES production function

The baseline model assumes an open capital account and a Cobb-Douglas specification of production function, which is consistent with this assumption. Some developing countries, however, are more integrated with financial markets than the others. In this section I investigate how the baseline results change for such countries, by focusing on a CES representation of energy demand. Specifically, I repeat the simulations of all four policy experiments when the production function in the formal sector is assumed to be a nested CES production function as in (31). I discuss the main conclusions below.

In all policy experiments, the effects on variables are less pronounced, because with a lower elasticity of substitution between labor and energy, imposing a carbon tax has a small impact on the relative cost of labor, and consequently on labor demand and labor market outcomes. Another key result for the case with a nested CES function is that the hump-shaped pattern of some variables under Case C ($b = \pi_b w_m$; $z = \pi_z(1 + \tau_L)w_m$) and varying public consumption (Table 12) disappears³⁰. The low elasticity of substitution between labor and energy, along with the imposition of energy taxes, do not allow the overall tax burden to fall (for example, a 5% increase in energy taxes lowers payroll taxes by a tiny 0.48%, compared with 1.75% in the baseline policy scenario with a Case C tax regime and varying public consumption), so the hump-shaped pattern disappears.

The results point out that it is harder to reduce emissions with a lower elasticity, because of a smaller decline in demand for energy. At the same time, the results also imply that green tax policies under a lower elasticity are associated with higher public revenues and consequently with higher general public spending, as the last column of Table 12 illustrates. The results are consistent with other studies that point out the importance of the elasticity of substitution between energy and labor (capital) for the effectiveness of emission reduction initiatives³¹.

7 Conclusion

In this paper I study the employment and welfare implications of environmental tax reforms, which are accompanied by three alternative assumptions about public spending: (1) as part of a revenue-neutral policy, (2) fixed, and (3) varying endogenously. The results demonstrate that, under a taxation scheme that gives rise to a double dividend, a lower level of public spending is associated with a smaller negative impact on the after-tax income of all households and a higher increase in employment, and the lowest level of public spending occurs when it varies endogenously as a fraction of GDP. These green reforms, however, still lead to a reduction in social welfare, and even more so in the case of endogenous public spending. As

³⁰Simulation results of the first and third policy experiments with a nested CES production function are available upon request.

³¹For example, Jorgenson et al. (2000), using a computable general equilibrium model for the US economy, IGEM, find that rigidity in production (in a form of inability to substitute labor, capital, or other materials for energy) more than doubles the costs of mitigation policies. The varying values of elasticity of substitution between energy and labor (capital) can also affect the effectiveness of mitigation policies, with high inter-factor (between energy and value-added) and inter-fuel substitution elasticities generating large carbon leakages.

such, lower public spending as a complementary policy to improve the labor market effects of environmental tax reforms in developing countries are likely to be unsuccessful. Policymakers should therefore look for other alternative and more socially acceptable ways to reduce the tax burden on labor to support the implementation of environmental tax reforms in developing countries.

8 Appendix A

Country	Unemployment benefits
Argentina	<ul style="list-style-type: none"> ◦ earnings-related and declining after 4 months ◦ non-declining for shorter terms ◦ there are min. and max. values of benefits
Brazil	earnings-related, but within ranges: <ul style="list-style-type: none"> ◦ previous income up to 767.6 BRL: 80% of the average wage ◦ 767,6-1279.46 BRL: 614.08 BRL+ 50% of the excess over 767 BRL ◦ previous income above 1279.46 BRL: 870.01 BRL ◦ there are min. and max. values of benefits
Chile	earnings-related and descending: <ul style="list-style-type: none"> ◦ 50% of the remuneration the first month ◦ 45%, 40%, 35% and 30% in the following
Ecuador	earnings-related: <p>sum set equal to 3 times the average salary of last 12 months</p>
Uruguay	earnings-related and descending: <p>for workers with monthly compensation and jobbers:</p> <ul style="list-style-type: none"> ◦ 50% of wage over the last 6 months, in case of the suspension ◦ in case of a layoff 66%, 57%, 50%, 45%, 42% and 40% of the salary ◦ there are min. and max. values of benefits
Venezuela	earnings-related: <ul style="list-style-type: none"> ◦ 60% the of average weekly wage of the last 50 weeks ◦ min. benefit is 60% of the minimum wage
Mexico	no nationwide UI, flat-rate systems linked to the minimum wage

Table 1: Unemployment insurance systems in Latin America

Note: Sources: Velasquez (2010), Bosch and Campos-Vazquez (2010), Hijzen (2011). The information provided in this table is based on the most recent available data on the latest reforms of unemployment insurance schemes: 1991 in Argentina (<http://www.trabajo.gov.ar/segurodesempleo/>), 2009 in Chile, 2001 in Ecuador, 2008 in Uruguay, 2005 in Venezuela (<http://www.seguridadsocialparatodos.org/aysss/content/sud-america/venezuela.html>), 2007 in Mexico City. Values for Brasil are updated regularly (see, the website of Ministerio do Trabalho e Emprego, MTE, Governo do Brasil). For Mexico see also: <http://www.socialsecurityextension.org/gimi/gess/ShowTheme.do?tid=2667>.

Parameter	Cobb-Douglas pr.f.	CES pr.f.
Search model parameters		
ν parameter of vacancy posting cost	0.40	0.4
s search intensity	0.5	0.5
ϕ search cost elasticity	2.00	2
β bargaining strength of workers	0.5	0.5
M matching function efficiency	0.1	0.1
z_p indexation of severance pay to wage	3.36	3.36
Π search intensity parameter	3.14	3.14
γ matching function elasticity	0.50	0.50
λ monthly job separation rate	0.04	0.04
Other parameters		
τ_e energy tax rate	0.15	0.15
r monthly interest rate	0.04/12	0.04/12
r_m return on capital	0.04/12	0.04/12
α_1 share of capital in formal sector production	0.269	-
γ_1 share of capital in agricultural sector	0.63	0.63
α_2 share of labor in formal sector production	0.5	-
α share of labor in formal sector production	-	0.3
γ_2 share parameter in the nested CES function	-	0.1
ε elasticity of substitution btw capital/labor & energy	-	0.05
A_a productivity in agricultural sector	1	1
A_m productivity in urban sector	2	5.2
A^E fossil energy-augmenting technology	-	5.2

Table 2: Baseline parameter values.

Labor market characteristics	Model	Data	Source
Agricultural employment share, L_a	0.13	0.13	Mexico 2010, World Bank (SL.AGR.EMPL.ZS)
Unemployment (informal sector share), u	30.63%	34.1%	Mexico 2009, LABORSTA, ILO
Formal sector wage/rural wage, w_m/w_a	2.09	1.93	Mexico (LABORSTA, ILO) average 1995-2008 ^a
Payroll tax rate, τ_L	0.25	0.19, 0.27	Mexico (2013) OECD
Average employment duration	18.11 mths	12-27 mths ^b	Mexico (1992,1993) Gong and van Soest (2002)

Table 3: Labor market characteristics: data vs. model.

^aThe number is calculated as the ratio of the monthly wage in the manufacturing sector and that paid in the agricultural sector for all men and women. The respective ratio for Brazil in years 1994-2002 was 2.3, in Peru in years 1989-1993 1.73, in Venezuela 1.40 in year 1997. Satchi and Temple (2009) use the number 1.80 based on ILO data for 1990. Given that data for Mexico is most recent, I target the ratio 1.93 in my calibration.

^bRespectively for men women and men.

G	Case	u	w_m	$(b+z)$	b	z	w_a	s	θ
1. $G = \bar{G}$	A: $b = \bar{b}$ $z = \bar{z}$	0.75	-1.63%	0	0	0	-3.83%	↓	↓
2. $G = \bar{G}$	B: $b = \pi_b w_m$ $z = \tilde{\pi}_z w_m$	0.28	-1.33%	-1.33%	-1.33%	-1.33%	-3.53%	↓	↓
3. revenue-neutral	C: $b = \pi_b w_m$ $z = \pi_z(1 + \tau_L)w_m$	-0.78	-1.17%	-4.58%	-1.17%	-5.46%	-3.43%	↑	↓
4. $G = \bar{G}$	C: $b = \pi_b w_m$ $z = \pi_z(1 + \tau_L)w_m$	-0.86	-0.72%	-4.48%	-0.72%	-5.45%	-2.77%	↑	↓
5. G varies	C: $b = \pi_b w_m$ $z = \pi_z(1 + \tau_L)w_m$	-1.06	0.46%	-4.23%	0.46%	-5.44%	-1.02%	↑	↓

Notes: Green tax reform constitutes an increase in the energy tax rate from $\tau_{e,m} = 0.15$ (baseline) to $\tau_{e,m} = 0.3$; the steady-state value of unemployment is already in percentage terms, so $u = 0.75$ (under first policy experiment) means that unemployment increased by 0.75 percentage points, from 30.63% (baseline) to 31.38%; changes in other variables relative to their baseline values.

Table 4: Labor market effects of green tax reform under different tax regimes and assumptions about government expenditure: A summary.

(a) The effects of varying the energy tax rate when G is fixed.											
τ_E	(1)	(2)	(3)	(4)	(5)	(6)	(7)	(8)	(9)	(10)	(11)
	τ_L	θ	u	w_a	w_m	z	b	s	$\hat{\tau}$	gov rev	G
0.1500	0.2500	3.2822	0.3063	1.3378	2.7964	1.1686	0.3017	0.5000		0.7386	0.6581
0.1575	0.2463	3.2813	0.3057	1.3364	2.7962	1.1652	0.3016	0.5013	-0.00015	0.7382	0.6581
0.1650	0.2428	3.2804	0.3052	1.3349	2.7959	1.1617	0.3016	0.5025	-0.00023	0.7378	0.6581
0.2000	0.2273	3.2761	0.3030	1.3274	2.7932	1.1461	0.3013	0.5082	0.00041	0.7362	0.6581
0.2500	0.2076	3.2703	0.3001	1.3149	2.7863	1.1249	0.3006	0.5156	0.00380	0.7336	0.6581
0.3000	0.1903	3.2647	0.2977	1.3008	2.7764	1.1049	0.2995	0.5222	0.00966	0.7307	0.6581
0.3500	0.1751	3.2594	0.2955	1.2855	2.7641	1.0860	0.2982	0.5281	0.01759	0.7276	0.6581
0.4000	0.1617	3.2544	0.2936	1.2692	2.7499	1.0681	0.2967	0.5334	0.02727	0.7243	0.6581

(b) The effects of varying the energy tax rate when G varies.											
$\tau_{e,m}$	(1)	(2)	(3)	(4)	(5)	(6)	(7)	(8)	(9)	(10)	(11)
	τ_L	θ	u	w_a	w_m	z	b	s	$\hat{\tau}$	gov rev	G
0.1500	0.2500	3.2822	0.3063	1.3378	2.7964	1.1686	0.3017	0.5000		0.7386	0.6581
0.1575	0.2456	3.2811	0.3056	1.3376	2.7979	1.1652	0.3018	0.5015	-0.00092	0.7371	0.6568
0.1650	0.2413	3.2800	0.3050	1.3374	2.7994	1.1617	0.3020	0.5031	-0.00175	0.7357	0.6555
0.2000	0.2223	3.2747	0.3023	1.3354	2.8046	1.1462	0.3026	0.5101	-0.00452	0.7290	0.6495
0.2500	0.1981	3.2672	0.2988	1.3307	2.8087	1.1250	0.3030	0.5192	-0.00569	0.7194	0.6408
0.3000	0.1766	3.2599	0.2957	1.3241	2.8093	1.1051	0.3031	0.5275	-0.00409	0.7099	0.6321
0.3500	0.1574	3.2528	0.2930	1.3160	2.8071	1.0862	0.3028	0.5351	-0.00014	0.7004	0.6235
0.4000	0.1402	3.2459	0.2905	1.3066	2.8026	1.0684	0.3023	0.5420	0.00577	0.6911	0.6151

Table 5: The effects of varying the energy tax rate under indexation scheme $b = \pi_b w_m$, $z = \pi_z(1 + \tau_L)w_m$ and when either G is fixed or G varies, under the baseline values of the labor share=0.5 and energy share =0.231.

(a) The welfare effects when G is fixed.

(1)	(2)	(3)	(4)	(5)	(6)	(7)	(8)	(9)
$\tau_{e,m}$	EV_a	EV_m	EV_i	u	\mathcal{U}_m	\mathcal{U}_i	\mathcal{U}_a	W
0.1500				0.3063	1.8628	0.8385	0.7630	1.4469
0.1575	-0.0009	-0.0022	-0.0010	0.3058	1.8624	0.8384	0.7628	1.4466
0.1650	-0.0009	-0.0022	-0.0010	0.3053	1.8616	0.8380	0.7625	1.4460
0.2000	-0.0024	-0.0059	-0.0026	0.3031	1.8595	0.8370	0.7616	1.4442
0.2500	-0.0033	-0.0081	-0.0037	0.3004	1.8582	0.8365	0.7611	1.4421
0.3000	-0.0031	-0.0075	-0.0034	0.2981	1.8585	0.8366	0.7612	1.4404
0.3500	-0.0018	-0.0044	-0.0020	0.2961	1.8603	0.8374	0.7619	1.4388

(b) The welfare effects when G varies.

(1)	(2)	(3)	(4)	(5)	(6)	(7)	(8)	(9)
$\tau_{e,m}$	EV_a	EV_m	EV_i	u	\mathcal{U}_m	\mathcal{U}_i	\mathcal{U}_a	W
0.1500				0.3055	1.8612	0.8378	0.7624	1.4462
0.1575	-0.0009	-0.0023	-0.0010	0.3057	1.8611	0.8378	0.7623	1.4461
0.1650	-0.0018	-0.0045	-0.0020	0.3051	1.8595	0.8371	0.7616	1.4453
0.2000	-0.0055	-0.0135	-0.0061	0.3023	1.8526	0.8340	0.7588	1.4420
0.2500	-0.0096	-0.0234	-0.0105	0.2988	1.8445	0.8303	0.7555	1.4376
0.3000	-0.0124	-0.0303	-0.0137	0.2957	1.8381	0.8274	0.7528	1.4337
0.3500	-0.0142	-0.0348	-0.0156	0.2930	1.8331	0.8252	0.7508	1.4301

Table 6: Welfare effects of a green tax reform. The model with $b = \pi_b w_m$, $z = \pi_z(1 + \tau_L)w_m$.

(a) Labor share = 0.5 and energy share = 0.231 (baseline case).											
$\tau_{e,m}$	(1)	(2)	(3)	(4)	(5)	(6)	(7)	(8)	(9)	(10)	(11)
	τ_L	θ	u	w_a	w_m	z	b	s	$\hat{\tau}$	gov rev	G
0.15	0.2500	3.2823	0.3063	1.3379	2.7965	1.1687	0.3017	0.5000		0.7386	0.6582
0.1575	0.2464	3.2814	0.3058	1.3365	2.7963	1.1652	0.3017	0.5013	-0.0002	0.7382	0.6582
0.165	0.2428	3.2804	0.3053	1.3350	2.7959	1.1618	0.3017	0.5026	-0.0002	0.7379	0.6582
0.2	0.2273	3.2762	0.3030	1.3274	2.7933	1.1462	0.3014	0.5083	0.0004	0.7362	0.6582
0.25	0.2076	3.2703	0.3002	1.3150	2.7864	1.1250	0.3006	0.5157	0.0038	0.7336	0.6582
0.3	0.1904	3.2647	0.2977	1.3009	2.7765	1.1050	0.2996	0.5222	0.0097	0.7307	0.6582
0.35	0.1752	3.2594	0.2955	1.2855	2.7642	1.0861	0.2982	0.5281	0.0176	0.7277	0.6582
0.4	0.1618	3.2545	0.2936	1.2692	2.7500	1.0681	0.2967	0.5334	0.0273	0.7244	0.6582

(b) Labor share = 0.631 and energy share = 0.1.											
$\tau_{e,m}$	(1)	(2)	(3)	(4)	(5)	(6)	(7)	(8)	(9)	(10)	(11)
	τ_L	θ	u	w_a	w_m	z	b	s	$\hat{\tau}$	gov rev	G
0.15	0.2500	3.2083	0.3087	1.3379	3.6484	1.4903	0.4680	0.5000		0.8007	0.6750
0.1575	0.2487	3.2079	0.3086	1.3374	3.6485	1.4888	0.4680	0.5005	-0.00012	0.8006	0.6750
0.165	0.2474	3.2076	0.3084	1.3369	3.6485	1.4873	0.4680	0.5009	-0.00021	0.8005	0.6750
0.2	0.2417	3.2061	0.3075	1.3342	3.6483	1.4804	0.4680	0.5030	-0.00038	0.7997	0.6750
0.25	0.2343	3.2040	0.3065	1.3297	3.6469	1.4710	0.4678	0.5057	0.00010	0.7986	0.6750
0.3	0.2276	3.2021	0.3055	1.3245	3.6444	1.4620	0.4675	0.5082	0.00132	0.7974	0.6750
0.35	0.2215	3.2004	0.3046	1.3188	3.6408	1.4533	0.4670	0.5104	0.00318	0.7961	0.6750
0.4	0.2160	3.1987	0.3038	1.3127	3.6365	1.4451	0.4665	0.5125	0.00561	0.7947	0.6750

(c) Labor share = 0.691 and energy share = 0.04.											
$\tau_{e,m}$	(1)	(2)	(3)	(4)	(5)	(6)	(7)	(8)	(9)	(10)	(11)
	τ_L	θ	u	w_a	w_m	z	b	s	$\hat{\tau}$	gov rev	G
0.15	0.2500	3.1746	0.3099	1.3379	4.3562	1.7608	0.5993	0.5000		0.8914	0.7299
0.1575	0.2495	3.1744	0.3098	1.3377	4.3563	1.7601	0.5993	0.5002	-5.07E-05	0.8914	0.7299
0.165	0.2490	3.1743	0.3097	1.3375	4.3563	1.7595	0.5993	0.5003	-9.38E-05	0.8913	0.7299
0.2	0.2469	3.1738	0.3094	1.3364	4.3564	1.7565	0.5993	0.5011	-0.0002	0.8910	0.7299
0.25	0.2441	3.1730	0.3090	1.3346	4.3560	1.7524	0.5993	0.5021	-0.0001	0.8905	0.7299
0.3	0.2415	3.1723	0.3086	1.3325	4.3552	1.7485	0.5992	0.5030	0.0002	0.8899	0.7299
0.35	0.2392	3.1717	0.3083	1.3302	4.3539	1.7447	0.5990	0.5039	0.0008	0.8893	0.7299
0.4	0.2371	3.1711	0.3080	1.3278	4.3524	1.7410	0.5988	0.5047	0.0016	0.8887	0.7299

Table 7: The effects of varying the energy tax rate under indexation scheme $b = \pi_b w_m$, $z = \pi_z(1 + \tau_L)w_m$ and when $G = \bar{G}$, under different values of energy and labor shares.

(a) Labor share = 0.5 and energy share = 0.231 (baseline case).

	(1)	(2)	(3)	(4)	(5)	(6)	(7)	(8)	(9)	(10)	(11)
τ_E	τ_L	θ	u	w_a	w_m	z	b	s	$\hat{\tau}$	gov rev	G
0.15	0.2500	3.2823	0.3063	1.3379	2.7965	1.1687	0.3017	0.4999		0.7386	0.6582
0.1575	0.2456	3.2812	0.3057	1.3377	2.7980	1.1652	0.3019	0.5016	-0.0009	0.7371	0.6569
0.165	0.2413	3.2800	0.3051	1.3374	2.7994	1.1618	0.3020	0.5031	-0.0017	0.7357	0.6556
0.2	0.2224	3.2748	0.3023	1.3355	2.8047	1.1462	0.3026	0.5101	-0.0045	0.7291	0.6495
0.25	0.1981	3.2673	0.2988	1.3308	2.8087	1.1251	0.3030	0.5193	-0.0057	0.7195	0.6408
0.3	0.1766	3.2599	0.2957	1.3242	2.8094	1.1051	0.3031	0.5276	-0.0041	0.7099	0.6321
0.35	0.1575	3.2528	0.2930	1.3160	2.8072	1.0863	0.3029	0.5351	-0.0001	0.7005	0.6236
0.4	0.1403	3.2460	0.2906	1.3067	2.8026	1.0684	0.3024	0.5421	0.0058	0.6911	0.6151

(b) Labor share = 0.631 and energy share = 0.1.

	(1)	(2)	(3)	(4)	(5)	(6)	(7)	(8)	(9)	(10)	(11)
$\tau_{e,m}$	τ_L	θ	u	w_a	w_m	z	b	s	$\hat{\tau}$	gov rev	G
0.15	0.25	3.2083	0.3087	1.3379	3.6484	1.4903	0.4679	0.49999		0.8007	0.6750
0.1575	0.2485	3.2079	0.3085	1.3378	3.6491	1.4888	0.4681	0.5005	-0.0003	0.8002	0.6746
0.165	0.247	3.2075	0.3083	1.3377	3.6497	1.4873	0.4682	0.5011	-0.0006	0.7997	0.6741
0.2	0.2404	3.2057	0.3073	1.3369	3.6523	1.4804	0.4685	0.5035	-0.0017	0.7973	0.6720
0.25	0.2316	3.2033	0.3061	1.3352	3.6547	1.4710	0.4688	0.5067	-0.0025	0.7937	0.6689
0.3	0.2237	3.2010	0.3049	1.3327	3.6559	1.4620	0.4689	0.5096	-0.0025	0.7902	0.6659
0.35	0.2165	3.1989	0.3039	1.3296	3.6559	1.4534	0.4689	0.5123	-0.0018	0.7866	0.6628
0.4	0.2099	3.1968	0.3029	1.3259	3.6550	1.4451	0.4688	0.5147	-0.00049	0.7831	0.6598

(c) Labor share = 0.691 and energy share = 0.04.

	(1)	(2)	(3)	(4)	(5)	(6)	(7)	(8)	(9)	(10)	(11)
$\tau_{e,m}$	τ_L	θ	u	w_a	w_m	z	b	s	$\hat{\tau}$	gov rev	G
0.15	0.2500	3.1746	0.3099	1.3379	4.3562	1.7608	0.5993	0.5000		0.891448055	0.7299
0.1575	0.2494	3.1744	0.3098	1.3379	4.3565	1.7601	0.5993	0.5002	-0.00012	0.8912	0.7297
0.165	0.2489	3.1743	0.3097	1.3378	4.3568	1.7595	0.5993	0.5003	-0.00023	0.8910	0.7295
0.2	0.2465	3.1736	0.3094	1.3375	4.3580	1.7565	0.5995	0.5012	-0.00065	0.8900	0.7287
0.25	0.2432	3.1728	0.3089	1.3368	4.3591	1.7524	0.5997	0.5024	-0.00099	0.8886	0.7275
0.3	0.2403	3.1720	0.3085	1.3358	4.3597	1.7485	0.5998	0.5035	-0.00106	0.8871	0.7262
0.35	0.2375	3.1712	0.3081	1.3345	4.3599	1.7447	0.5998	0.5045	-0.0009	0.8857	0.7250
0.4	0.2350	3.1705	0.3077	1.3330	4.3597	1.7411	0.5997	0.5054	-0.0005	0.8842	0.7238

Table 8: The effects of varying the energy tax rate under indexation scheme $b = \pi_b w_m$, $z = \pi_z(1 + \tau_L)w_m$ and when $G = \psi Y$, under different values of energy and labor shares.

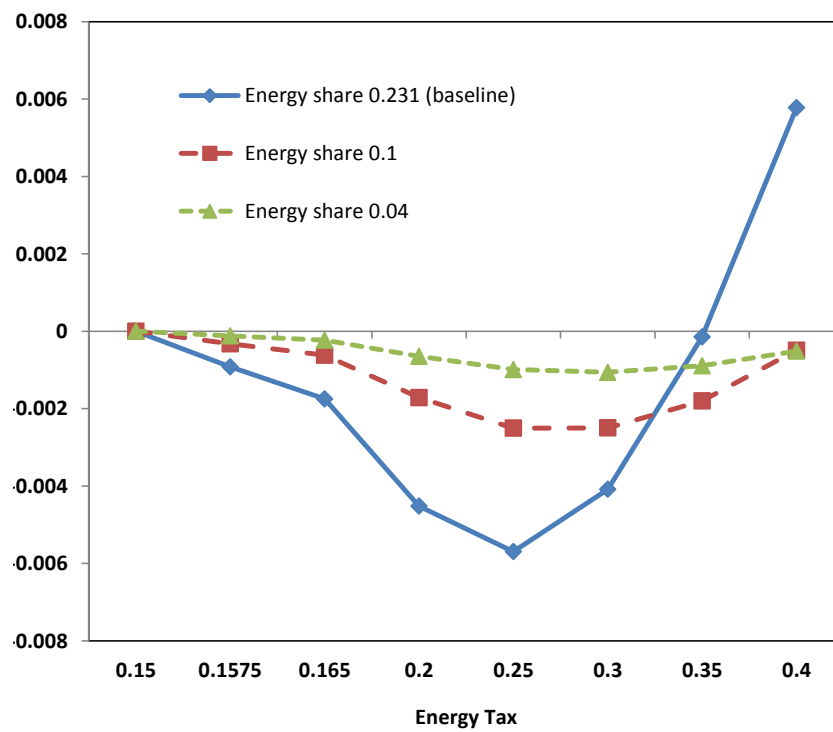


Figure 1: Change in tax burden for varying values in energy tax rate: different values of energy share, $b = \pi_b w_m$, $z = \pi_z (1 + \tau_L) w_m$, G varies.

(a) The effects of varying the energy tax rate when $\beta = 0.5$ (baseline).

$\tau_{e,m}$	(1) τ_L	(2) u	(3) w_m	(4) w_m normal.	(5) w_a	(6) $z + b - \sigma$
0.15	0.2500	1.0000	2.7965	1.0000	1.3379	0.5530
0.1575	0.2456	0.9979	2.7980	1.0005	1.3377	0.5466
0.165	0.2413	0.9959	2.7994	1.0011	1.3374	0.5403
0.2	0.2224	0.9869	2.8047	1.0029	1.3355	0.5122
0.25	0.1981	0.9755	2.8087	1.0044	1.3308	0.4755
0.3	0.1766	0.9655	2.8094	1.0046	1.3242	0.4424
0.35	0.1575	0.9566	2.8072	1.0038	1.3160	0.4124
0.4	0.1403	0.9486	2.8026	1.0022	1.3067	0.3851

(b) The effects of varying the energy tax rate when $\beta = 0.25$.

$\tau_{e,m}$	(1) τ_L	(2) u	(3) w_m	(4) w_m normal.	(5) w_a	(6) $z + b - \sigma$
0.15	0.2500	1.0000	2.4184	1.0000	1.3379	0.8223
0.1575	0.2457	0.9977	2.4197	1.0005	1.3378	0.8171
0.165	0.2415	0.9954	2.4209	1.0010	1.3376	0.8120
0.2	0.2228	0.9856	2.4251	1.0028	1.3361	0.7893
0.25	0.1989	0.9730	2.4283	1.0041	1.3320	0.7592
0.3	0.1776	0.9620	2.4286	1.0042	1.3259	0.7317
0.35	0.1587	0.9522	2.4265	1.0033	1.3182	0.7065
0.4	0.1417	0.9436	2.4225	1.0017	1.3092	0.6832

(c) The effects of varying the energy tax rate when $\beta = 0.05$.

$\tau_{e,m}$	(1) τ_L	(2) u	(3) w_m	(4) w_m normal.	(5) w_a	(6) $z + b - \sigma$
0.15	0.2500	1.0000	1.8828	1.0000	1.3379	1.4165
0.1575	0.2458	0.9984	1.8839	1.0006	1.3381	1.4155
0.165	0.2418	0.9969	1.8849	1.0011	1.3382	1.4144
0.2	0.2237	0.9900	1.8887	1.0031	1.3381	1.4090
0.25	0.2006	0.9811	1.8918	1.0048	1.3359	1.4007
0.3	0.1800	0.9733	1.8927	1.0052	1.3319	1.3920
0.35	0.1616	0.9663	1.8916	1.0047	1.3263	1.3828
0.4	0.1451	0.9600	1.8890	1.0033	1.3195	1.3733

Table 9: The effects of varying the energy tax rate under different values of the workers' bargaining power β . The model with $b = \pi_b w_m$, $z = \pi_z(1 + \tau_L)w_m$, varying G . Note: unemployment in (2) is normalized with respect to its value at $\tau_{e,m} = 0.15$. Column (4) reports formal sector wages relative to the baseline.

(a) The effects of varying the energy tax rate when $\phi = 1.5$.

	(1)	(2)	(3)	(4)
$\tau_{e,m}$	τ_L	u	w_a	L_m
0.15	0.2500	1.0000	1.3379	0.8700
0.1575	0.2455	0.9964	1.3382	0.8700
0.165	0.2411	0.9929	1.3384	0.8701
0.2	0.2218	0.9776	1.3387	0.8701
0.25	0.1970	0.9584	1.3371	0.8699
0.3	0.1751	0.9417	1.3333	0.8693
0.35	0.1556	0.9270	1.3279	0.8684
0.4	0.1382	0.9141	1.3210	0.8674

(b) The effects of varying the energy tax rate when $\phi = 2$ (baseline).

	(1)	(2)	(3)	(4)
$\tau_{e,m}$	τ_L	u	w_a	L_m
0.15	0.2500	1.0000	1.3379	0.8700
0.1575	0.2456	0.9979	1.3377	0.8700
0.165	0.2413	0.9959	1.3374	0.8699
0.2	0.2224	0.9869	1.3355	0.8696
0.25	0.1981	0.9755	1.3308	0.8689
0.3	0.1766	0.9655	1.3242	0.8679
0.35	0.1575	0.9566	1.3160	0.8666
0.4	0.1403	0.9486	1.3067	0.8650

(c) The effects of varying the energy tax rate when $\phi = 3$.

	(1)	(2)	(3)	(4)
$\tau_{e,m}$	τ_L	u	w_a	L_m
0.15	0.2500	1.0000	1.3379	0.8700
0.1575	0.2456	0.9985	1.3371	0.8699
0.165	0.2414	0.9970	1.3362	0.8697
0.2	0.2226	0.9904	1.3316	0.8690
0.25	0.1984	0.9820	1.3233	0.8677
0.3	0.1771	0.9747	1.3132	0.8661
0.35	0.1581	0.9681	1.3019	0.8642
0.4	0.1410	0.9622	1.2895	0.8622

Table 10: The effects of varying the energy tax rate under different values of the elasticity of search costs with respect to search intensity ϕ . The model with $b = \pi_b w_m$, $z = \pi_z(1 + \tau_L)w_m$, varying G .

(a) The effects of varying the energy tax rate when $\nu = 0.2$.

$\tau_{e,m}$	(1) τ_L	(2) u	(3) w_m	(4) w_a	(5) L_m	(6) v
0.15	0.2500	1.0000	2.9720	1.3379	0.8700	1.0000
0.1575	0.2456	0.9977	2.9736	1.3378	0.8700	1.0005
0.165	0.2413	0.9954	2.9752	1.3376	0.8700	1.0011
0.2	0.2222	0.9853	2.9810	1.3359	0.8697	1.0034
0.25	0.1977	0.9726	2.9855	1.3311	0.8690	1.0061
0.3	0.1761	0.9614	2.9864	1.3240	0.8678	1.0084
0.35	0.1568	0.9515	2.9842	1.3150	0.8664	1.0103
0.4	0.1396	0.9427	2.9795	1.3044	0.8647	1.0119

(b) The effects of varying the energy tax rate when $\nu = 0.4$ (baseline).

$\tau_{e,m}$	(1) τ_L	(2) u	(3) w_m	(4) w_a	(5) L_m	(6) v
0.15	0.2500	1.0000	2.7965	1.3379	0.8700	1.0000
0.1575	0.2456	0.9979	2.7980	1.3377	0.8700	1.0007
0.165	0.2413	0.9959	2.7994	1.3374	0.8699	1.0015
0.2	0.2224	0.9869	2.8047	1.3355	0.8696	1.0046
0.25	0.1981	0.9755	2.8087	1.3308	0.8689	1.0085
0.3	0.1766	0.9655	2.8094	1.3242	0.8679	1.0118
0.35	0.1575	0.9566	2.8072	1.3160	0.8666	1.0146
0.4	0.1403	0.9486	2.8026	1.3067	0.8650	1.0170

(c) The effects of varying the energy tax rate when $\nu = 0.6$.

$\tau_{e,m}$	(1) τ_L	(2) u	(3) w_m	(4) w_a	(5) L_m	(6) v
0.15	0.2500	1.0000	2.6850	1.3379	0.8700	1.0000
0.1575	0.2456	0.9981	2.6864	1.3376	0.8700	1.0009
0.165	0.2414	0.9962	2.6877	1.3373	0.8699	1.0017
0.2	0.2225	0.9881	2.6927	1.3353	0.8696	1.0054
0.25	0.1983	0.9776	2.6965	1.3307	0.8689	1.0100
0.3	0.1769	0.9684	2.6970	1.3245	0.8679	1.0140
0.35	0.1579	0.9602	2.6948	1.3170	0.8667	1.0174
0.4	0.1407	0.9528	2.6903	1.3084	0.8653	1.0204

Table 11: The effects of varying the energy tax rate under different values of vacancy posting costs, ν . The model with $b = \pi_b w_m$, $z = \pi_z(1 + \tau_L)w_m$, varying G . Note: the number of vacancies in (7) is normalized with respect to its value at $\tau_{e,m} = 0.15$.

Taxes		θ	u	w_m/w_a	w_m	z	b	s	v	G
$\tau_{e,m}$	τ_L									
0.1500	0.2500	3.5448	0.2981	1.7837	2.3864	1.0771	0.0856	0.4999	0.5285	0.5906
0.1575	0.2487	3.5446	0.2980	1.7847	2.3852	1.0755	0.0855	0.5004	0.5286	0.5907
0.1650	0.2475	3.5443	0.2978	1.7856	2.3842	1.0739	0.0855	0.5009	0.5287	0.5909
0.2000	0.2417	3.5429	0.2969	1.7900	2.3786	1.0665	0.0853	0.5030	0.5293	0.5917
0.2500	0.2334	3.5408	0.2957	1.7960	2.3714	1.0562	0.0850	0.5061	0.5300	0.5929
0.3000	0.2251	3.5386	0.2945	1.8019	2.3646	1.0460	0.0848	0.5092	0.5308	0.5939
0.3500	0.2167	3.5363	0.2933	1.8078	2.3582	1.0360	0.0846	0.5124	0.5315	0.5951
0.4000	0.2083	3.5339	0.2921	1.8136	2.3520	1.2969	0.0844	0.5156	0.5323	0.5962

Table 12: Effects of varying the energy tax rate: CES production function, G varies, $b = \pi_b w_m$, $z = \pi_z(1 + \tau_L)w_m$, baseline labor share = 0.5 and energy share = 0.231.

9 Technical appendix: not for publication

9.1 Balance of payments and government budget constraint equations

In this section I prove that the balance of payments equation is redundant in defining the steady-state equilibrium of the benchmark model.

Government I assume that the government needs to finance an exogenously given stream of public goods G as well as transfers to the unemployed:

$$G + uL_m b = \tau_L w_m (1 - u) L_m \left(1 + \nu \frac{r + \lambda}{q} \right) + \tau_{e,m} p_E e_m (1 - u) L_m. \quad (40)$$

We can rewrite the budget constraint by normalizing it with respect to the number of workers in the urban sector:

$$g + ub = \tau_L w_m (1 - u) \left(1 + \nu \frac{r + \lambda}{q} \right) + \tau_{e,m} p_E e_m (1 - u) \quad (41)$$

where $g \equiv G/L_m$.

Balance of payments Aggregate consumption in the rural area amounts to $C_a = w_a L_a$ and aggregate production of agricultural goods amounts to $g(k_a) L_a$, so that the excess income in the rural area that exceeds demand is used to rent capital that is fixed in the agricultural sector:

$$g(k_a) L_a - C_a = r_a K_a \quad (42)$$

where K_a is the total stock of capital used in the agricultural sector. Given perfect competition in the agricultural sector, equation (42) holds.

Aggregate private consumption in the city is the sum of consumption of the formally employed and the unemployed:

$$C = w_m (1 - u) L_m + \lambda P (1 - u) L_m + u L_m b + u L_m z \quad (43)$$

The firm-level capitalized hiring costs amount to:

$$\frac{\lambda + r}{q} c = \frac{\lambda + r}{q} \nu w_m + \frac{\lambda + r}{q} \nu w_m \tau_L \quad (44)$$

where the second term is a payment to the government by a firm. The aggregate hiring costs are then:

$$\frac{\lambda + r}{q} \nu w_m (1 - u) L_m \quad (45)$$

and the balance of payments in an economy implies that the excess of the aggregate income in the city over the aggregate demand is used to import both capital and energy at the international markets:

$$\left[(1 - u) L_m A_m f(k_m, e_m) + u L_m z - \frac{\lambda + r}{q} \nu w_m (1 - u) L_m \right] - C - G = p_E e_m (1 - u) L_m + r_m k_m (1 - u) L_m \quad (46)$$

By substituting the expression for C from (43) into (46) and dividing by L_m , we obtain:

$$(1 - u) A_m f(k_m, e_m) - w_m (\lambda + r) \frac{\nu}{q} (1 - u) - \frac{G}{L_m} - w_m (1 - u) - \lambda P (1 - u) - ub = p_E e_m (1 - u) + r_m k_m (1 - u) \quad (47)$$

Substituting G/L_m instead into the expression from the budget constraint (41), and dividing by $1 - u$, I obtain:

$$A_m f(k_m, e_m) - w_m(\lambda + r)\frac{\nu}{q} - w_m - \lambda P - \tau_L w_m \left(1 + \nu \frac{r + \lambda}{q}\right) - \tau_{e,m} p_E e_m = p_E e_m + r_m k_m \quad (48)$$

which is exactly the wage determination equation derived as part of the steady-state equilibrium in the main text:

$$A_m f(k_m, e_m) - (1 + \tau_{e,m}) p_E e_m - r_m k_m = (1 + \tau_L) w_m \left[1 + (\lambda + r)\frac{\nu}{q}\right] + \lambda P$$

References

- Albrecht, James, Lucas Navarro, and Susan Vroman**, “The Effects of Labour Market Policies in an Economy with an Informal Sector,” *Economic Journal*, 2009, *119* (539), 1105–1129.
- Barrage, Lint**, “Optimal dynamic carbon taxes in a climate-economy model with distortionary fiscal policy,” *mimeo*, Yale University, 2012.
- Bento, Antonio, Mark Jacobsen, and Antung A. Liu**, “Environmental policy in the presence of an informal sector,” *mimeo*, 2012.
- Bilbiie, F.**, “Limited asset market participation, monetary policy and (inverted) aggregate demand logic,” *Journal of Economic Theory*, 2016, *140*(1), 162–196.
- Binmore, K., A. Rubinstein, and A. Wolinsky**, “The Nash bargaining solution in economic modelling,” *the RAND Journal of Economics*, 1986, *17*(2), 176–188.
- Bosch, Mariano and Raymundo M. Campos-Vazquez**, “The trade-offs of social assistance programs in the labor market: The case of the Seguro Popular program in Mexico,” Serie documentos de trabajo del Centro de Estudios Economicos 2010-12, El Colegio de Mxico, Centro de Estudios Economicos Oct 2010.
- Bovenberg, A. and F. van der Ploeg**, “Effects of the tax and benefit system on wage formation and unemployment,” *unpublished manuscript*, 1994.
- Bovenberg, Lans**, “Environmental taxation and employment,” *De Economist*, 1995, *143*, 111–140.
- , “Green tax reforms and the double dividend: an updated reader’s guide,” *International Tax and Public Finance*, 1999, *6*, 421–443.
- **and Frederick van der Ploeg**, “Consequences of environmental tax reform for unemployment and welfare,” *Environmental and Resource Economics*, 1998, *12*, 137–150.
- **and –**, “Tax reform, structural unemployment and the environment,” *Scandinavian Journal of Economics*, 1998, *100* (3), 593–610.
- Dissou, Yazid, Lilia Karnizova, and Qian Sun**, “Industry-level econometric estimates of energy-capital-labor substitution with a nested CES production function,” *working paper n1214E, department of economics, University of Ottawa*, 2012.
- Ganelli, G. and J. Tervala**, “Public Infrastructures, Public Consumption, and Welfare in a New-Open-Economy-Macro Model,” *IMF working paper, 07/67*, 2007.
- Gerard, Francois and Gustavo Gonzaga**, “Social Insurance and Imperfect Monitoring,” *working paper, Columbia University*, 2012.
- Gollin, Douglas, David Lagakos, and Michael E. Waugh**, “The Agricultural Productivity Gap in Developing Countries,” *The Quarterly Journal of Economics*, 2014, *129*(2), 939–993.
- Golosov, Mikhail, John Hassler, Per Krusell, and Aleg Tsyvinski**, “Optimal taxes on fossil fuel in general equilibrium,” *Econometrica*, 2014, *82* (1), 41–88.

- Gong, Xiaodong and Arthur van Soest**, “Wage differentials and mobility in the urban labour market: a panel data analysis for Mexico,” *Labour Economics*, September 2002, 9 (4), 513–529.
- Handbook**, *Mexico Company Laws and Regulations Handbook* International Business Publications 2012.
- Harris, John R. and Michael P. Todaro**, “Migration, Unemployment and Development: A Two-Sector Analysis,” *American Economic Review*, 1970, 60(1), 126–142.
- Hassler, John, Per Krusell, and Conny Olovsson**, “Energy-saving technical change,” *NBER working paper 18456*, 2012.
- Hijzen, Alexander**, “The Labour Market Effects of Unemployment Compensation in Brazil,” OECD Social, Employment and Migration Working Papers 119, OECD Publishing Dec 2011.
- Horvath, M.**, “The effects of government spending shocks on consumption under optimal stabilization,” *European Economic Review*, 2009, 53, 815–829.
- ILO**, “Statistical update on employment in the informal economy,” 2012.
- Jorgenson, Dale, Richard J. Goettle, Peter J. Willcoxon, and Mun Sing Ho**, “The role of substitution in understanding the costs of climate change policy,” *report for the Pew Center on Global Climate Change*, 2000.
- Keen, Michael**, “VAT, tariffs, and withholding: border taxes and informality in developing countries,” *Journal of Public Economics*, 2008, 92, 1892–1906.
- Koskela, Erkki and Ronnie Schob**, “Alleviating unemployment: The case for green tax reforms,” *European Economic Review*, 1999, 43, 1723–1746.
- Kuralbayeva, Karlygash**, “Unemployment, rural-urban migration and environmental regulation,” *Review of Development Economics*, forthcoming.
- Liu, Antung Anthony**, “Tax evasion and optimal environmental taxes,” *Journal of Environmental Economics and Management*, 2013, 66, 656–670.
- Mortensen, Dale T and Christopher A Pissarides**, “Job Creation and Job Destruction in the Theory of Unemployment,” *Review of Economic Studies*, July 1994, 61 (3), 397–415.
- Pigott, John and John Whalley**, “VAT base broadening, self supply, and the informal sector,” *American Economic Review*, 2001, 91 (4), 1084–1094.
- Pissarides, Christopher**, “The impact of employment tax cuts on unemployment and wages; The role of unemployment benefits and tax structure,” *European Economic Review*, January 1998, 42 (1), 155–183.
- , *Equilibrium Unemployment Theory, 2nd Edition*, Vol. 1 of *MIT Press Books*, The MIT Press, 2000.
- Rogerson, R., R. Shimer, and R. Wright**, “Search-Theoretic models of the labor market: a survey,” *Journal of Economic Literature*, 2005, XLIII, 959–988.
- Satchi, Mathan and Jonathan Temple**, “Labor Markets and Productivity in Developing Countries,” *Review of Economic Dynamics*, January 2009, 12 (1), 183–204.

- Schneider, K.**, “Involuntary unemployment and environmental policy: the Double Dividend hypothesis,” *The Scandinavian Journal of Economics*, 1997, *99(1)*, 45–59.
- Sims, E. and J. Wolff**, “The output and welfare effects of government spending shocks over the business cycle,” *unpublished manuscript*, 2014.
- Upadhyaya, Shyam**, “Compilation of energy statistics for economic analysis,” *working paper 01/2010*, 2010.
- Velasquez, Mario**, “Seguros de desempleo y reformas recientes en America Latina,” CEPAL - Serie Macroeconomía del desarrollo 99, Naciones Unidas 2010.
- Vodopivec, Milan**, “Introducing unemployment insurance to developing countries,” *IZA Journal of Labor Policy*, 2013, *2 (1)*, 1–23.
- Yuan, Chaoqing, Sifeng Liu, and Junlong Wu**, “Research on energy-saving effect of technological progress based on Cobb-Douglas production function,” *Energy Policy*, August 2009, *37 (8)*, 2842–2846.
- Zenou, Yves**, “Job search and mobility in developing countries. Theory and policy implications,” *Journal of Development Economics*, June 2008, *86 (2)*, 336–355.