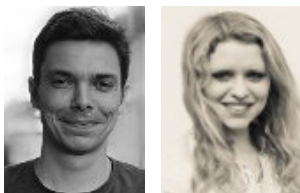


Measuring the diversity of each party's candidates in the German election



Opinion polls suggest six parties will enter the Bundestag in Germany's election on Sunday, two more than crossed the electoral threshold in the last elections in 2013. But what does this apparent fragmentation of the German party system mean for the diversity of candidates, particularly in terms of the fair representation of women and minority groups? [Paul C. Bauer](#) and [Julia Schulte-Cloos](#) present a detailed analysis of the numbers of women and foreign-born candidates on each party's candidate list.

They find that parties on the left/libertarian end of the scale are more inclusive of women, but that the left-wing Die Linke and right-wing AfD have the highest percentage of foreign-born candidates.

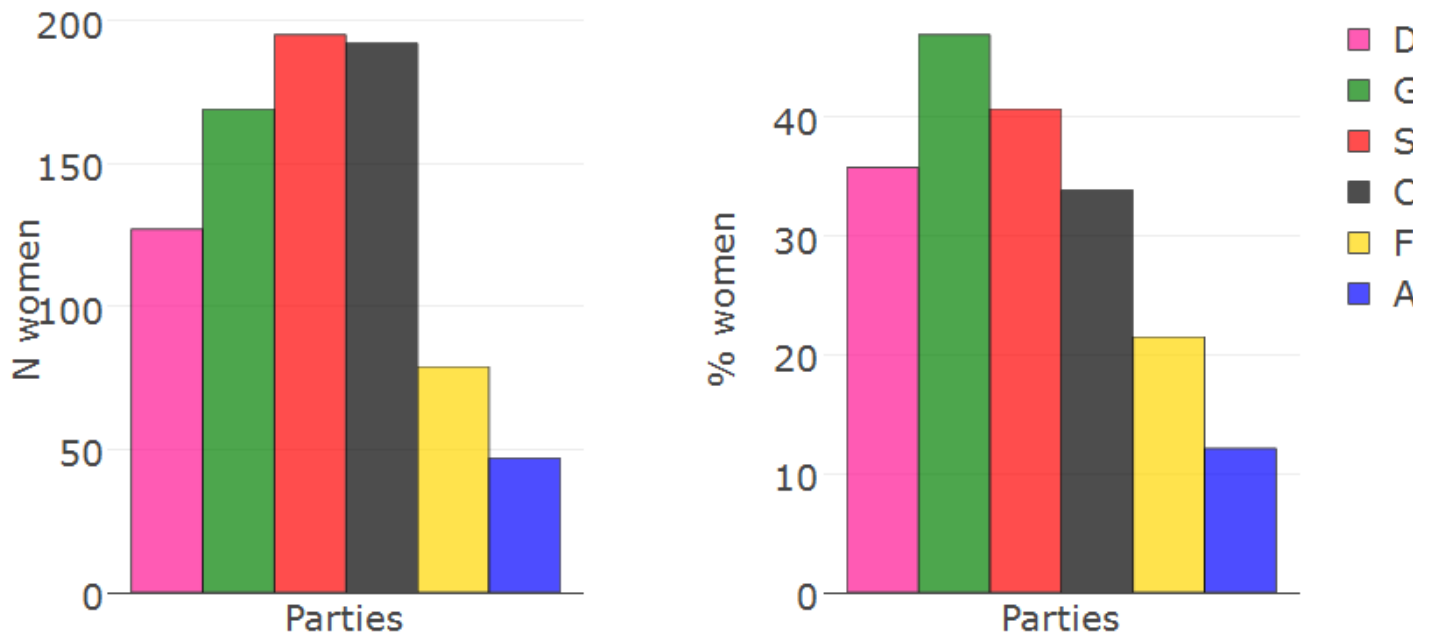
Ahead of Germany's federal election on Sunday, opinion polls indicate that the next parliament will be composed of six parties. In addition to the Liberals (FDP), who surprisingly failed to surpass the five percent threshold four years ago, the future parliament is likely to feature a populist radical right party, the Alternative für Deutschland (AfD), which is unprecedented in Germany's post-war history.

As chances are that six parties will move into parliament, the pool of party lists and candidates has substantially grown compared to the last election. The total number of candidates has grown by 8.5 percent as compared to the 2013 election. This poses the question whether the growth in numbers is accompanied by an increase in diversity. Research shows that the diversity of candidates is important in 1) encouraging political participation and 2) the future political activism of minorities, a finding which is equally valid for [female candidates](#) as well as candidates from [ethnic minorities](#).

We analyse the German candidates for the upcoming election by considering the distribution of women and candidates not born in Germany across parties and regions. We rely on a list of 4,828 candidates provided by the [federal returning officer of Germany](#). Our primary focus is on parties that have a high probability of getting into the Bundestag as predicted by [zweitstimme.org](#).

While our findings confirm expectations regarding the gender balance across parties, namely that it is highest among left-libertarian parties, the distribution of foreign-born candidates does not follow this pattern. Instead, the anti-immigration party AfD has the second highest share of candidates born in a foreign country, after Die Linke.

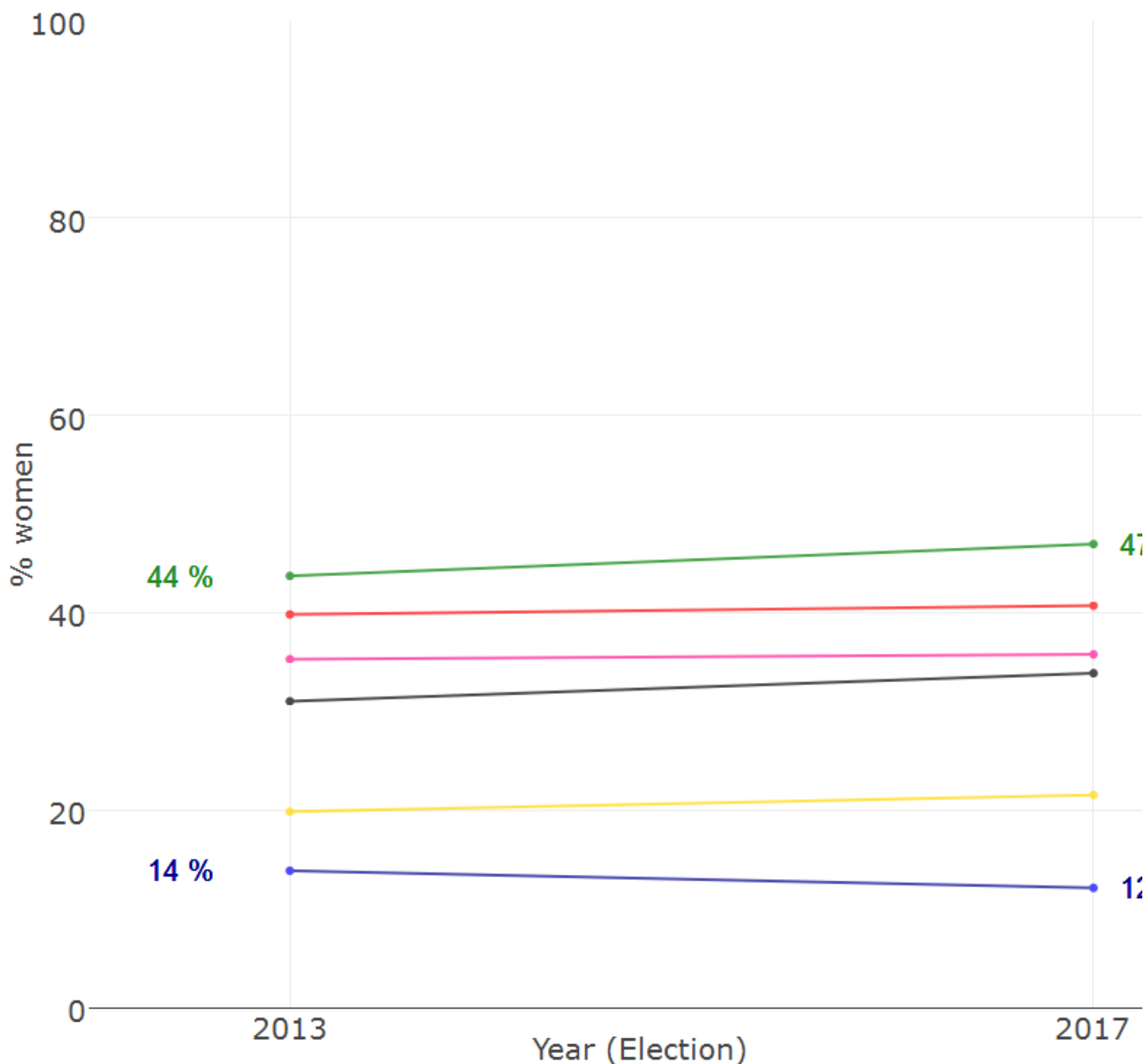
Figure 1: Women across parties



Note: Compiled by the authors.

Among all candidates running in the federal election, only every third candidate is a woman (29%). The party with the lowest share of female candidates is the AfD with around 12% (see Figure 1). The AfD is also the only party whose share of female candidates has decreased compared to 2013 (see Figure 2). In stark contrast, almost every second Green candidate is female (ca. 47%).

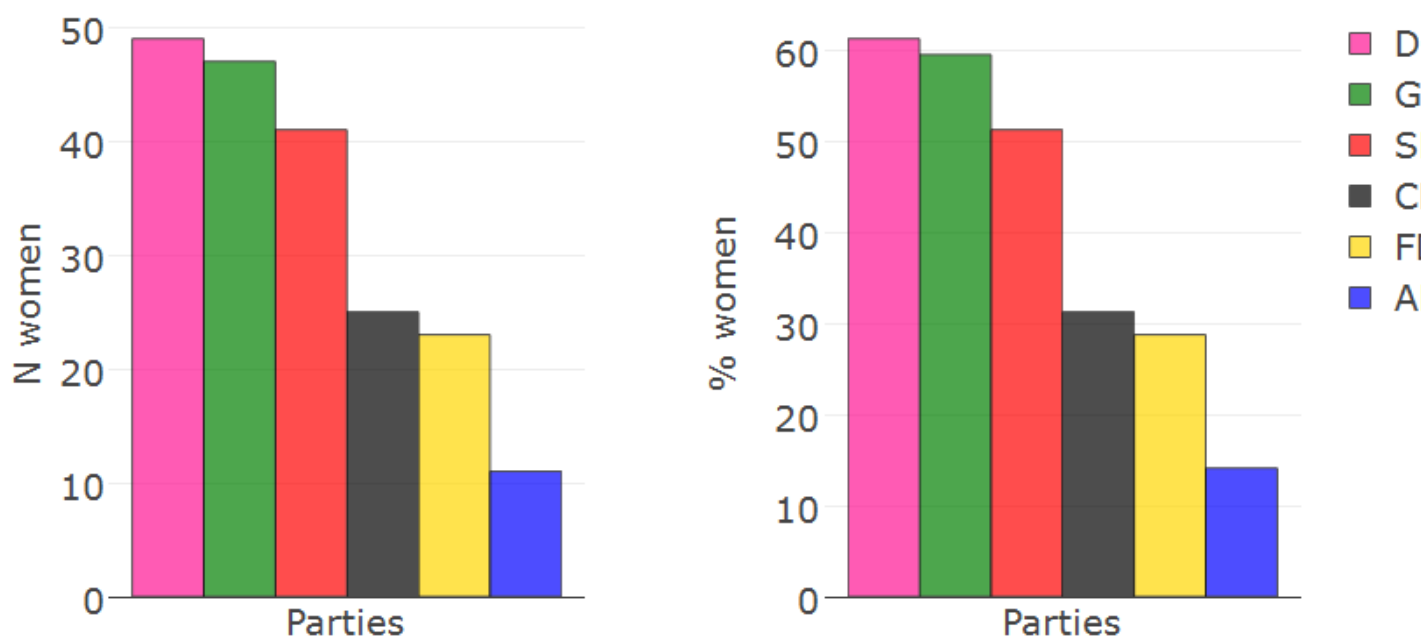
Figure 2: Women across parties, across time



Note: Compiled by the authors.

In the German mixed electoral system, [voters have two votes](#): the first to choose among *direct candidates* from their electoral district, the second to choose among *party lists*, both of which are listed on the state-specific ballot. The party lists mention the top five list candidates. As most voters do not have information on the share of female candidates among parties, the first five candidates on party lists may present a relevant cue. As shown in Figure 3, among the top five positions across the party lists of the six biggest parties across all states (N = 477), the share of women decreases when moving from left to right along the political left-right spectrum.

Figure 3: Women among top five party state-list positions

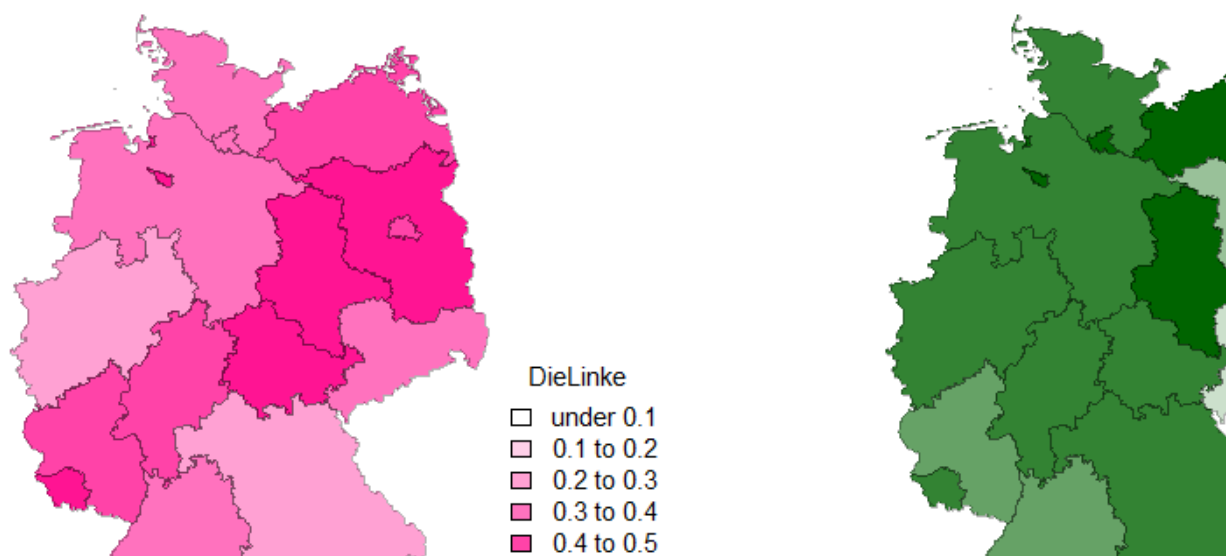


Note: Compiled by the authors.

Rather than just focusing on the top five positions on party lists, Figure 4 visualises the average share of women among all top five party list candidates *and* all direct candidates (N = 1,851) per party per state. In other words, we measure the share of female candidates mentioned on ballots per state per party. These are all candidates who either directly run for office in one of the 299 German electoral districts and/or run among the top five on the party lists within the states.

Interestingly, in addition to the strong variation across parties, we also find strong regional variation *within* parties. The share of women among candidates on voting ballots of the Green party ranges from below 20% to more than 50%. The CDU/CSU, another party with strong regional variation, has a high share of female candidates in the former GDR states – this share includes the candidacy of current chancellor Angela Merkel. In Southern Germany, in contrast, the share drops below 20%.

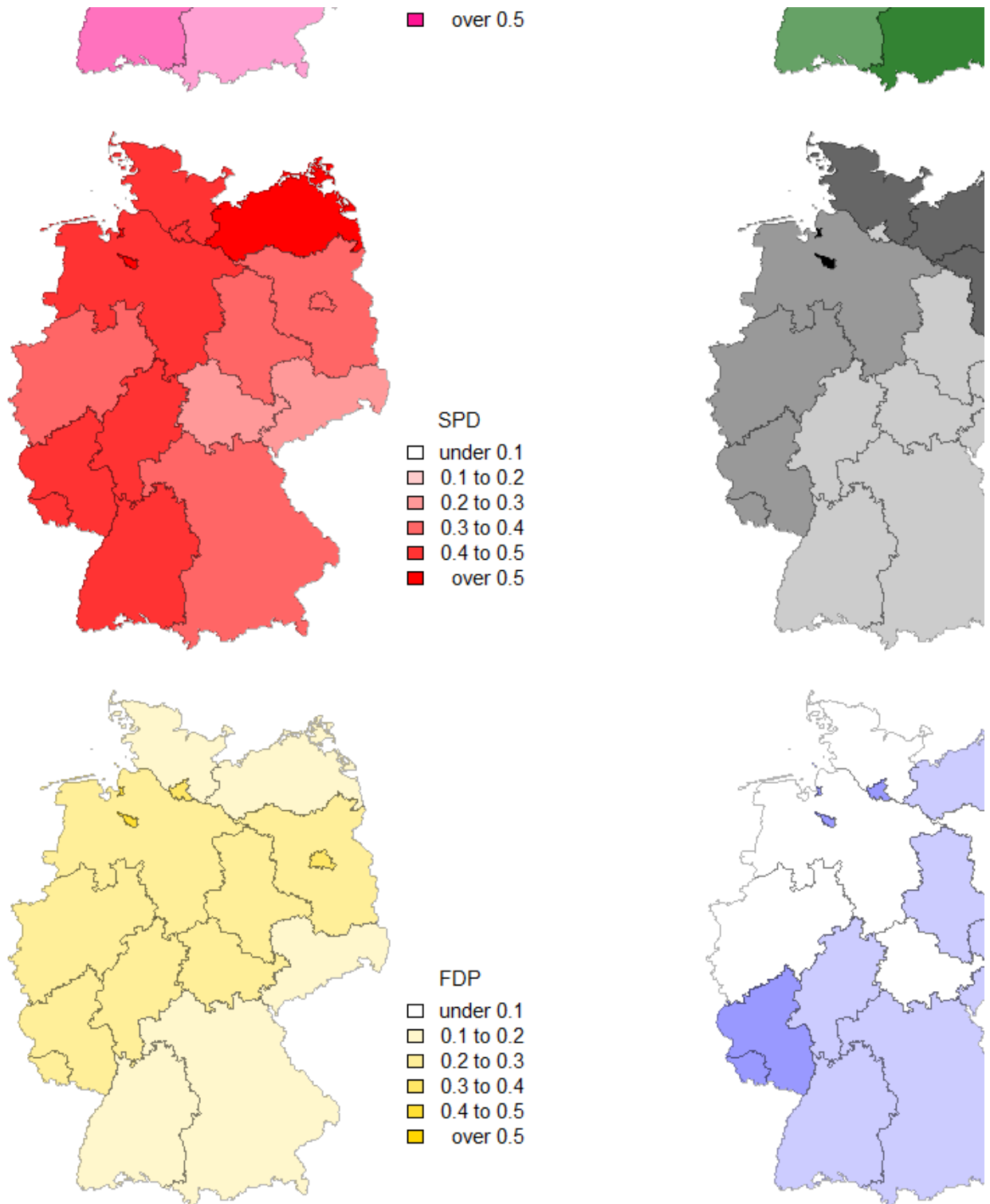
Figure 4: Women across parties, across states (proportion, click to enlarge)



Date originally posted: 2017-09-21

Permalink: <http://blogs.lse.ac.uk/europpblog/2017/09/21/measuring-the-diversity-of-each-partys-candidates-in-the-german-election/>

Blog homepage: <http://blogs.lse.ac.uk/europpblog/>

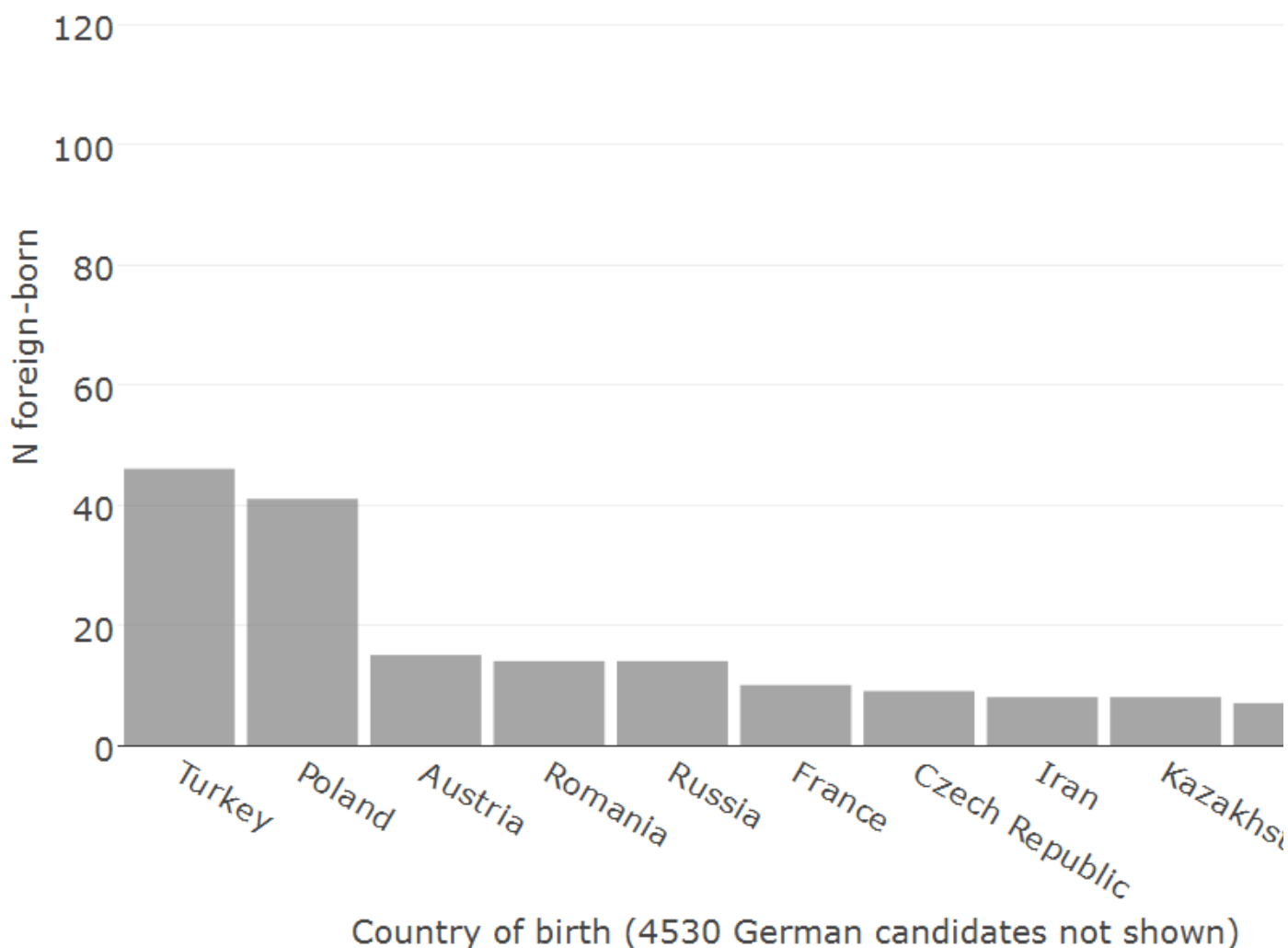


Note: Compiled by the authors.

The candidacies of ethnic minorities may encourage other minority members to cast a vote on Election Day or engage in politics as well. While it is challenging to collect data on the migrant background of candidates whose parents or grandparents have migrated to Germany, the official data of the Federal Election Commissioner include candidates' places of birth.

In other words, as a rough approximation of migration background we consider whether candidates were born in a foreign country and migrated to Germany. By automatically geocoding the place of birth of all 4,828 candidates, we obtain a variable indicating the country of origin. The overwhelming majority of candidates running for office in the 2017 federal election were born in Germany, 4,530 out of 4,828 candidates. As shown in Figure 5, the largest groups of foreign-born candidates are from Turkey, Poland, Austria, Romania, Russia, France, and a few other countries.

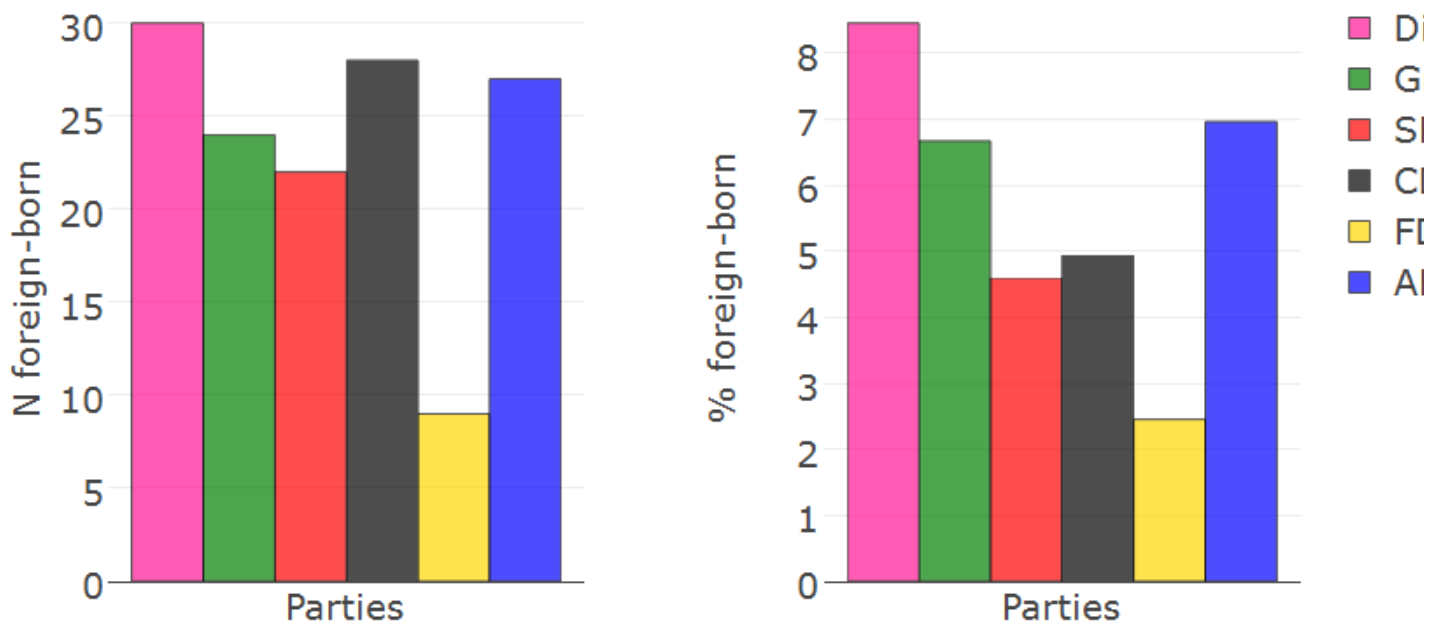
Figure 5: Countries of origin across all foreign-born candidates



Note: Compiled by the authors, total N = 298.

Figure 6 illustrates that the highest share of candidates born in a foreign country can be found among candidates of Die Linke. Surprisingly, the anti-immigration party AfD features the second greatest share of candidates not born in Germany.

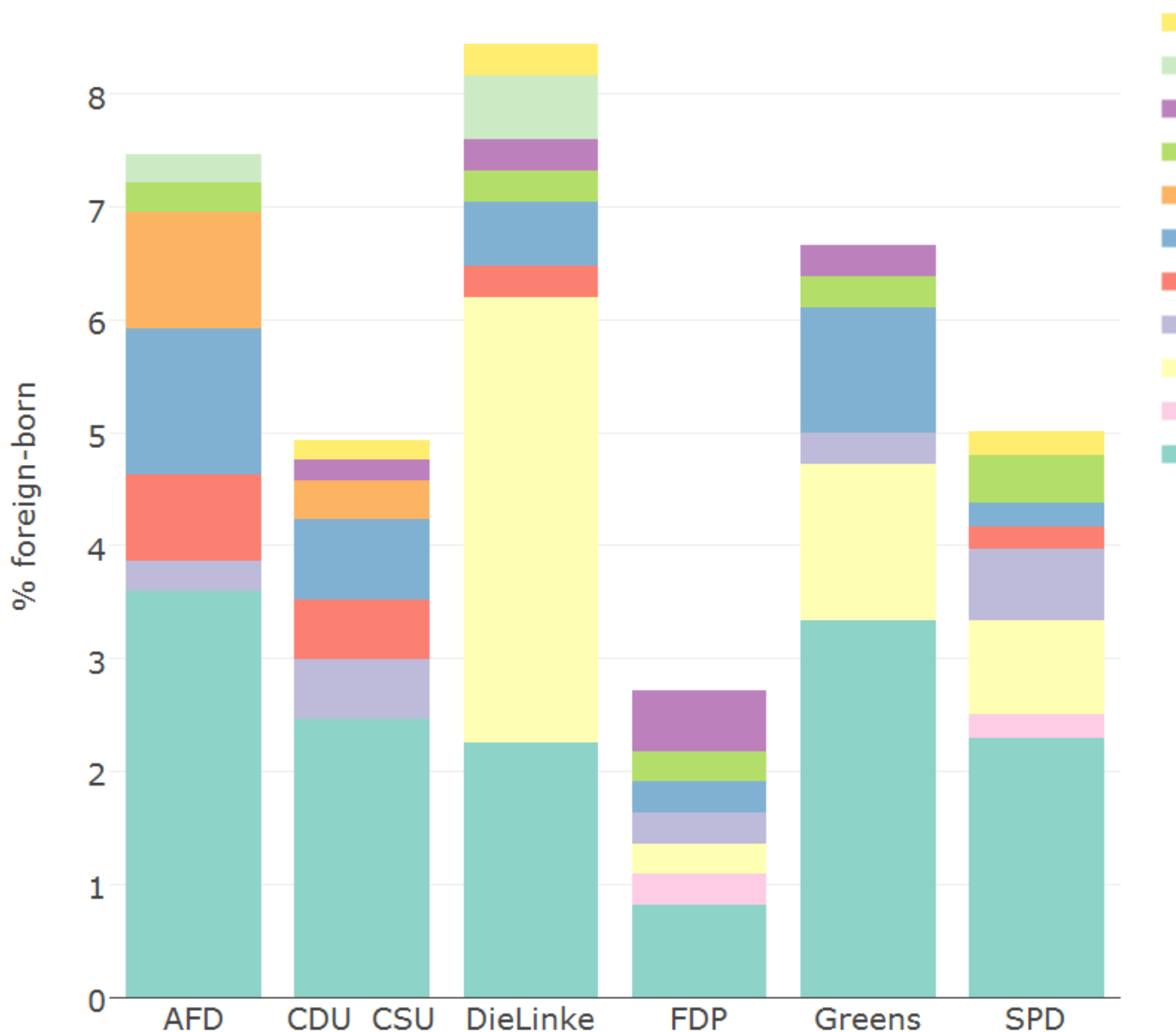
Figure 6: Foreign-born candidates by party



Note: Compiled by the authors.

Figure 7 provides a more refined view and illustrates that in contrast to Die Linke, which features mostly candidates from Turkey, candidates in the AfD instead originate from Central and Eastern European countries. The AfD's foreign-born candidates stem from countries like Poland, Romania and the Czech Republic. Generally, however, the share of candidates not born in Germany is low across all parties.

Figure 7: Countries of origin across parties



Note: Compiled by the authors.

Commentators expect a fragmentation of the political parties represented in the 19th German Bundestag. The number of candidates and party lists running on Sunday has grown. Focusing on two key aspects of representation, namely gender and migration background, this blog post highlights the variation across and within parties.

Our findings confirm expectations of a greater gender balance among left-libertarian parties, which may stem from the fact that they embrace gender-equal politics. We assume that this gender-balance is sustained by a self-reinforcing “[role-model effect](#)” that mobilises future political activists. In terms of country of origin, the pattern is less systematic across parties. While our analyses do confirm an intuition of greater diversity of candidates among Die Linke and the Greens, the anti-immigration party AfD features the second greatest share of candidates that were not born in Germany.

[Please read our comments policy before commenting.](#)

Note: This article gives the views of the author, not the position of EUROPP – European Politics and Policy or the London School of Economics.

About the author



Paul C. Bauer – *Mannheim Centre for European Social Research*

[Paul C. Bauer](#) is a research fellow at the Mannheim Centre for European Social Research (MZES). His areas of research include political sociology and research methods. He tweets [@p_c_bauer](#)



Julia Schulte-Cloos – *European University Institute*

[Julia Schulte-Cloos](#) is a PhD candidate with a specialisation in comparative politics at the European University Institute (EUI), Florence. Her research interests include electoral behaviour, party politics, and quantitative research designs.