

childhood conduct vs adulthood costs

the sample: boys aged 6-7



hyperactivity problems



conduct problems



mixed problems



control

This study took place over a

20

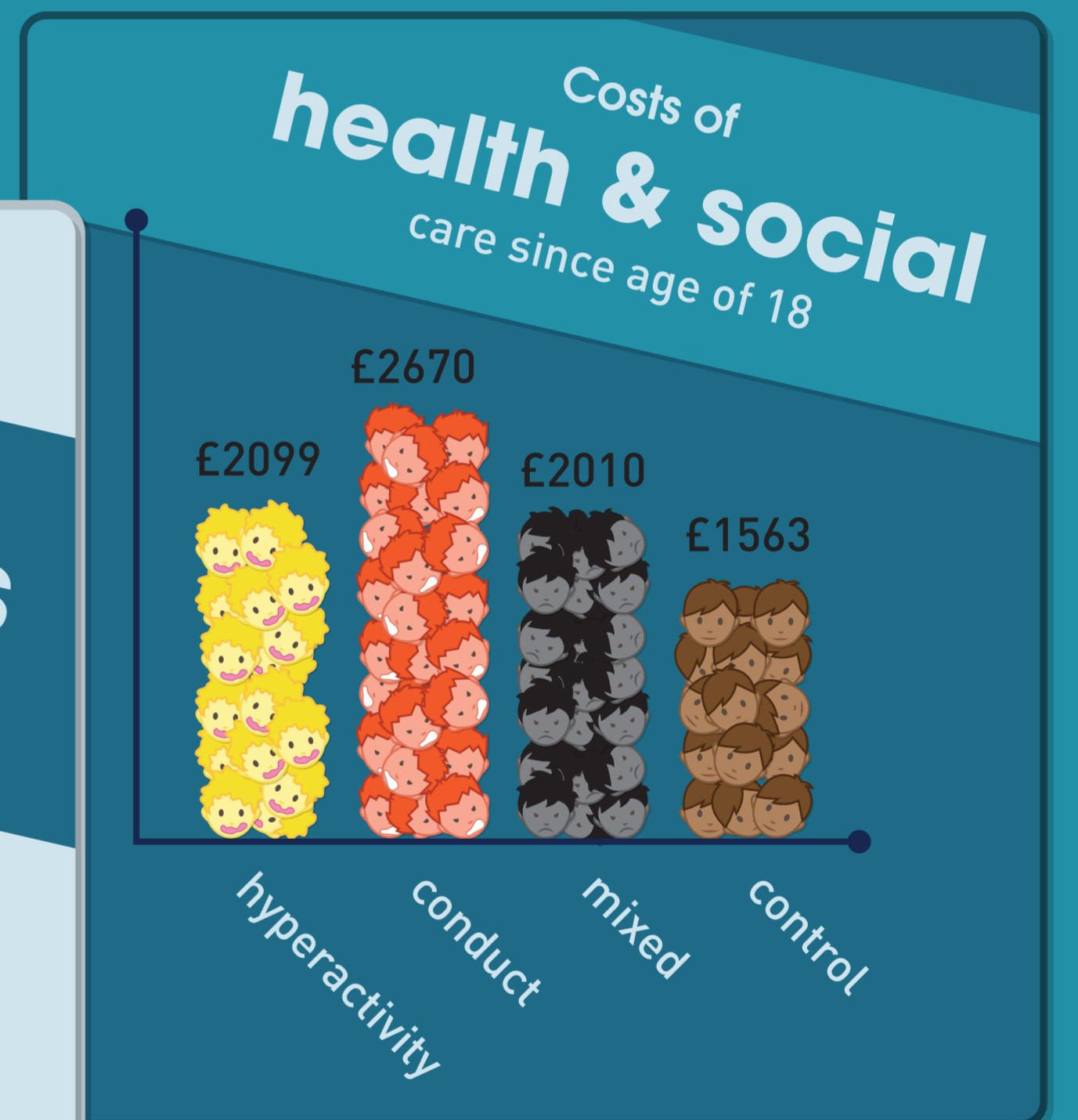
year period



Conduct problems are associated with difficulties in adulthood...



...but little is known about later service use or public expenditure costs



High levels of early childhood conduct problems are particularly associated with increased health, social care and criminal justice costs in adulthood.

2-3 times increased

early adulthood costs for children with conduct disorders