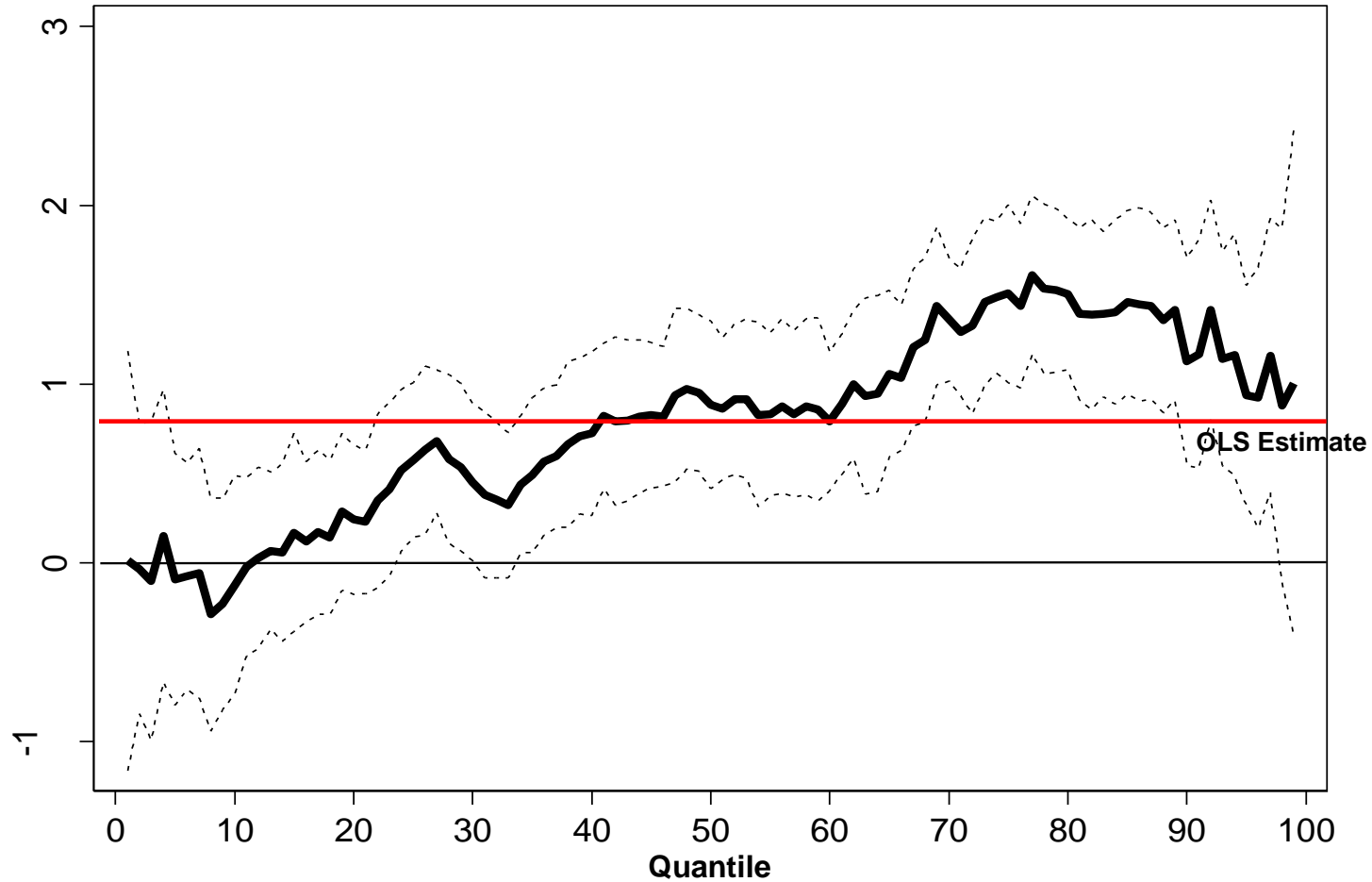


Figure 3: Quantile Regression Estimate of the Effect of Feedback



Notes: We graph the estimated effect of feedback on test score at each quantile of the conditional distribution of student test scores, and the associated 95% confidence interval. The distribution of test scores is conditioned on the following student characteristics - gender, whether the student is British, whether they were an undergraduate at the same university, whether they are registered as a student from the UK, EU, or outside the EU, the academic year, the time period, an interaction between the feedback regime and the time period, and teaching department dummies. These are equal to one for the student if she takes at least one module in the department.