

**Erik J. Baurdoux, Nan Chen, Budhi Surya and Kazutoshi Yamazaki**

## Optimal double stopping of a Brownian bridge

**Article (Accepted version)  
(Refereed)**

**Original citation:**

Baurdoux, Erik J., Chen, Nan, Surya, Budhi and Yamazaki, Kazutoshi (2015) Optimal double stopping of a Brownian bridge. *Advances in Applied Probability* . ISSN 0001-8678

© 2015 Applied Probability Trust

This version available at: <http://eprints.lse.ac.uk/61618/>

Available in LSE Research Online: April 2015

LSE has developed LSE Research Online so that users may access research output of the School. Copyright © and Moral Rights for the papers on this site are retained by the individual authors and/or other copyright owners. Users may download and/or print one copy of any article(s) in LSE Research Online to facilitate their private study or for non-commercial research. You may not engage in further distribution of the material or use it for any profit-making activities or any commercial gain. You may freely distribute the URL (<http://eprints.lse.ac.uk>) of the LSE Research Online website.

This document is the author's final accepted version of the journal article. There may be differences between this version and the published version. You are advised to consult the publisher's version if you wish to cite from it.

# OPTIMAL DOUBLE STOPPING OF A BROWNIAN BRIDGE

ERIK J. BAURDOUX, NAN CHEN, BUDHI A. SURYA, AND KAZUTOSHI YAMAZAKI

ABSTRACT. We study optimal double stopping problems driven by a Brownian bridge. The objective is to maximize the expected spread between the payoffs achieved at the two stopping times. We study several cases where the solutions can be solved explicitly by strategies of threshold type.

**Key words:** Brownian bridge; optimal double stopping, buying-selling strategies

**Mathematics Subject Classification (2010):** 60G40, 60H30

## 1. INTRODUCTION

In this paper, we study several optimal double stopping problems for a Brownian bridge. Given a Brownian bridge  $\{X_s\}_{t \leq s \leq 1}$  starting from  $x$  at time  $0 \leq t < 1$  and ending at 0 at time 1, or equivalently a Brownian motion conditioned to be at 0 at time 1, our objective is to choose a pair of stopping times,  $t \leq \tau_1 \leq \tau_2 < 1$  such that the expected spread between the payoffs  $f(X_{\tau_2})$  and  $f(X_{\tau_1})$  is maximized for a given functional  $f$ .

The optimal double stopping problem has received much attention recently in the field of finance. In particular, this is used to derive a “buy low and sell high” strategy so as to maximize the expected spread between the two payoffs. The strategy called *mean-reversion* typically uses the “mean” computed from the historical data as a benchmark; an asset is bought if the price is lower and is sold when it is higher. Closely related is the trading strategy called *pairs trading*. Two assets of similar characteristics (e.g., in the same industry category) are considered. By longing one and shorting the other, one can construct a mean-reverting portfolio. An implementation of a pairs trading reduces to solving a single or double stopping problem where one wants to decide the time of (entry and) liquidation of the position so as to maximize the spread. We refer the reader to, e.g., [3], [7] and [13] among others.

There are several motivations to consider a Brownian bridge as an underlying process. We list here three examples where an asset process is expected to converge to a given value at a given time, and hence a Brownian bridge is suitable in modeling.

The first example, known as the *stock pinning*, is a phenomenon where a stock price tends to end up in the vicinity of the strike of its option near its expiry. This is observed typically for heavily traded assets; within minutes before the expiration, the stock price experiences a strong mean-reversion to the

strike. We refer the reader to [2] and [4] and references therein, for the discussion on the mechanism of the stock pinning.

The second example is a sudden mispricing of assets due to the market's overreaction to news and rumors, which is followed by a rapid recovery to the original value. In the well-known 2010 *Flash Crash*, the Dow Jones Industry Average fell about 9 percent and then recovered within minutes; see, e.g., Chapter III of [8]. While its cause is still in dispute, it is believed to have been first triggered by some newly disclosed information on debt crisis in Greece, followed by a chain reaction of large execution of sales by the automated algorithmic/high frequency trading. While the price may not recover completely to the original price, the difference is small in comparison to the magnitude of the large fall caused by these events.

The third example comes from the dynamic prices of goods in the existence of seasonality and/or fixed sales deadlines. Important examples include low cost carriers (LCC's)/high speed rails, hotel rooms and theater tickets, where these goods become worthless after given deadlines. In the field of revenue/yield management, the price of such good is chosen dynamically (and stochastically) over time so as to maximize the expected total yield; the problem reduces to striking the balance between maximizing the price per unit and minimizing the remaining stocks at the deadline. In typical models, the dynamic programming principle applies and the optimal price becomes a function of the remaining number of stocks and the remaining time until the deadline; see, among others, the seminal paper by Gallego and van Ryzin [5]. According to these models, the price converges to a given value on condition that the remaining inventory vanishes by the deadline; this is aimed by the manager and is indeed more than likely achieved when the demand is high (e.g., holiday seasons).

The optimal double stopping problem for a Brownian bridge considered in this paper is applicable in situations where one wants to buy and sell an asset to maximize the spread until it converges to the fixed value as in these examples.

There are papers on the single optimal stopping problem for a Brownian bridge. In particular, Shepp [11] solves the problem of maximizing the first moment of the stopped Brownian bridge (under the assumption that it starts at zero) by rewriting the problem in terms of a time-changed Brownian motion. Ekström and Wanntorp [4] solve for several payoff functionals with arbitrary starting values. Our findings heavily rely on the latter; we shall start with the results in [4] and extend to the optimal double stopping problem. Regarding the discrete-time analog (the urn problem), we refer the reader to [9] and [14] for single optimal stopping problems. For optimal double stopping problems, Ivashko [6] considers the problem of maximizing the spread of the first moment; Sofrenov et al. [12] consider a different but related buying-selling problem under independent observations.

**1.1. Problems.** Fix  $0 \leq t < 1$  and consider a Brownian bridge  $\{X_s\}_{t \leq s \leq 1}$  satisfying

$$(1.1) \quad dX_s = -\frac{X_s}{1-s} ds + dW_s, \quad t \leq s < 1,$$

with  $X_t = x \in \mathbb{R}$  and where  $\{W_s\}_{t \leq s \leq 1}$  denotes a standard Brownian motion. We let  $\mathbb{P}_{t,x}$  and  $\mathbb{E}_{t,x}$  be the conditional probability and expectation under which  $X_t = x$  for any  $0 \leq t < 1$  and  $x \in \mathbb{R}$ .

We consider three problems of maximizing the expected spread given as follows:

**Problem 1:**  $\mathbb{E}_{t,x} [X_{\tau_2} - X_{\tau_1}]$ ,

**Problem 2:**  $\mathbb{E}_{t,x} [(X_{\tau_2}^{2n+1} - X_{\tau_1}^{2n+1})1_{\{X_{\tau_1} \leq 0\}} + (X_{\tau_1}^{2n+1} - X_{\tau_2}^{2n+1})1_{\{X_{\tau_1} > 0\}}]$ , for a given integer  $n \geq 0$ ,

**Problem 3:**  $\mathbb{E}_{t,x} [|X_{\tau_2}|^q - |X_{\tau_1}|^q]$ , for a given  $q > 0$ .

The supremum is taken over all pairs of stopping times  $t \leq \tau_1 \leq \tau_2 < 1$  a.s. with respect to the filtration generated by  $X$ .

Problem 1 corresponds to the case where short-selling is not permitted, and an asset must be bought prior to being sold. Problem 2 is the case where it is allowed; if the price at the first exercise time is negative (resp. positive), the asset is bought (resp. sold) and then it is sold (resp. bought) at the second exercise time. Problem 3 models the case when the payoff function is v-shaped with respect to the underlying; this is motivated by investing strategies such as a straddle.

For each problem, we shall show that the optimal stopping times are first hitting times of the time-changed process  $\{X_s/\sqrt{1-s}\}_{t \leq s \leq 1}$ .

To the best of our knowledge, this is the first result on the finite-time horizon optimal double stopping problem where the solution is nontrivial and explicit. It is remarked that a finite-time horizon optimal stopping in general lacks an explicit solution even for a single stopping case. For other processes, we expect that the solutions are either trivial (e.g. buying immediately and selling at the maturity) or do not admit analytical solutions. It is also noted that thanks to the a.s. fixed end point of a Brownian bridge, the two stoppings are always exercised; for other processes, one needs to take care of a scenario where the first and/or second stoppings never occur during the time horizon.

**1.2. Outlines.** The rest of the paper is organized as follows. Section 2 reviews the single optimal stopping problem of a Brownian bridge as obtained in [4] with some complements that will be needed for our analysis in later sections. Sections 3, 4 and 5 solve Problems 1, 2 and 3, respectively. Some proofs are deferred to Appendix A.

## 2. PRELIMINARIES

In this section, we review the results of Ekström and Wanntorp [4] for the optimal single stopping problem of a Brownian bridge. As there are a few details omitted in [4] but will be important in our analysis, we complement these results here. Throughout, let us define, for all  $q > 0$ ,<sup>1</sup>

$$(2.1) \quad F_q(y) := \int_0^\infty u^{q-1} e^{yu - u^2/2} du \quad \text{and} \quad G_q(y) := F_q(-y), \quad y \in \mathbb{R}.$$

<sup>1</sup>It is remarked that (3.5) of [4] contains a typo in their definitions of  $F_q$  and  $G_q$ . We suggest the reader to refer to Section 4 of Ekström et al. [3] for a correct version.

These functions can be written in terms of the confluent hypergeometric/parabolic cylinder functions; see, e.g., [1]. Consider the partial differential equation (PDE),  $\mathcal{L}\xi(t, x) = 0$ , for  $\xi \in C^1 \times C^2$  on some open set  $E$ , with the infinitesimal generator  $\mathcal{L}$  for a Brownian bridge (1.1),

$$(2.2) \quad \mathcal{L}\xi(t, x) := \frac{\partial}{\partial t}\xi - \frac{x}{1-t}\frac{\partial}{\partial x}\xi + \frac{1}{2}\frac{\partial^2}{\partial x^2}\xi, \quad (t, x) \in E.$$

This can be simplified by setting  $\xi(t, x) = (1-t)^{q/2}\zeta(x/\sqrt{1-t})$  to an ordinary differential equation (ODE),

$$(2.3) \quad \zeta''(y) - y\zeta'(y) - q\zeta(y) = 0.$$

A general solution of (2.3) can be written as a linear combination of  $F_q$  and  $G_q$ ; see Section 4 of [3].

In particular, when  $q = 1$ , (2.1) is simplified to

$$(2.4) \quad F_1(y) = e^{y^2/2} \int_{-y}^{\infty} e^{-u^2/2} du = \sqrt{2\pi}e^{y^2/2}\Phi(y) \quad \text{and} \quad G_1(y) = \sqrt{2\pi}e^{y^2/2}\Phi(-y), \quad y \in \mathbb{R},$$

where  $\Phi$  denotes the standard normal distribution function, i.e.,

$$\Phi(y) := \frac{1}{\sqrt{2\pi}} \int_{-\infty}^y e^{-z^2/2} dz, \quad y \in \mathbb{R}.$$

Consequently, we also have  $(G_1 + F_1)(y) = \sqrt{2\pi} \exp(y^2/2)$  for all  $y \in \mathbb{R}$ .

**2.1. One-sided exit problem.** For fixed integer  $n \geq 0$ , consider the single stopping problem:

$$(2.5) \quad U(t, x) := \sup_{t \leq \tau < 1} \mathbb{E}_{t,x}[X_{\tau}^{2n+1}], \quad 0 \leq t < 1, \quad x \in \mathbb{R}.$$

Define the upcrossing time of the process  $\{X_s/\sqrt{1-s}\}_{t \leq s \leq 1}$ ,

$$(2.6) \quad \tau^+(B) := \inf\{s \geq t : X_s \geq B\sqrt{1-s}\}, \quad B \in \mathbb{R}.$$

Following the arguments as in [4], we have, for any  $B \in \mathbb{R}$ ,

$$(2.7) \quad \mathbb{E}_{t,x}[X_{\tau^+(B)}^{2n+1}] = (1-t)^{n+1/2} \frac{B^{2n+1}}{F_{2n+1}(B)} F_{2n+1}\left(x/\sqrt{1-t}\right), \quad x < B\sqrt{1-t},$$

which can be derived by solving (2.3) for  $q = 2n + 1$  and  $y = x/\sqrt{1-t}$  with its boundary conditions; see page 172 of [4].

Ekström and Wanntorp [4] show that (2.5) is solved by the stopping time (2.6) by choosing  $B$  that maximizes (2.7) or equivalently the function  $B \mapsto B^{2n+1}/F_{2n+1}(B)$ . Taking its derivative,

$$\frac{\partial}{\partial B} \frac{B^{2n+1}}{F_{2n+1}(B)} = \frac{B^{2n}}{F_{2n+1}(B)} \left[ (2n+1) - \frac{BF'_{2n+1}(B)}{F_{2n+1}(B)} \right], \quad B \in \mathbb{R}.$$

The sign of the above is determined by that of the function

$$B \mapsto (2n+1) - BF'_{2n+1}(B)/F_{2n+1}(B),$$

which is plotted in Figure 1. As is shown in [4], it is monotonically decreasing and there exists a unique zero  $B^* > 0$  such that

$$(2.8) \quad B^* F'_{2n+1}(B^*) = (2n + 1) F_{2n+1}(B^*)$$

and

$$(2.9) \quad \frac{\partial}{\partial B} \frac{B^{2n+1}}{F_{2n+1}(B)} > 0 \iff B < B^*, \quad B \in \mathbb{R}.$$

Define the candidate value function  $U^*(t, x) := \mathbb{E}_{t,x}[X_{\tau+(B^*)}^{2n+1}]$  for  $0 \leq t < 1$  and  $x \in \mathbb{R}$ . The verification of optimality requires the following lower bound on  $B^*$ ; as it is not included in [4], we shall give its proof. Note that this is also confirmed in the numerical plots of Figure 1.

**Lemma 2.1.** *We have  $B^* \geq \sqrt{n}$ .*

*Proof.* See Appendix A. □

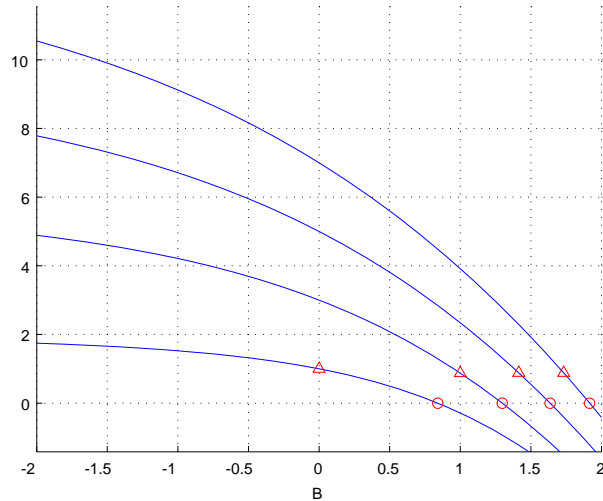


FIGURE 1. Plots of the function  $B \mapsto (2n+1) - BF'_{2n+1}(B)/F_{2n+1}(B)$  for  $n = 0, 1, 2, 3$ . Triangles indicate the points at  $\sqrt{n}$ . Circles indicate the points at  $B^*$ .

By Lemma 2.1, for  $x > B^* \sqrt{1-t}$  (where  $U^*(t, x) = x^{2n+1}$ ),

$$\mathcal{L}U^*(t, x) = (2n + 1) \left[ n - \frac{x^2}{1-t} \right] x^{2n-1} \leq 0.$$

This together with the smooth fit at  $B^* \sqrt{1-t}$  (which can be confirmed by simple algebra) verifies the optimality using martingale arguments via Itô's formula.

**Theorem 2.1** (Ekström and Wanntorp [4], Theorems 2.1 and 3.1). (1) *An optimal stopping time for (2.5) is given by  $\tau^+(B^*)$  and the value function  $U(t, x)$  is given by*

$$(2.10) \quad U(t, x) = U^*(t, x) = \begin{cases} (1-t)^{n+1/2} (B^*)^{2n+1} \frac{F_{2n+1}(x/\sqrt{1-t})}{F_{2n+1}(B^*)}, & \text{if } x < B^* \sqrt{1-t}, \\ x^{2n+1}, & \text{if } x \geq B^* \sqrt{1-t}. \end{cases}$$

(2) *In particular, when  $n = 0$ ,  $B^* \simeq 0.84$  is the unique solution to*

$$(2.11) \quad \sqrt{2\pi}(1-B^2)e^{B^2/2}\Phi(B) = B.$$

*The value function  $U(t, x)$  is given by, if  $x < B^* \sqrt{1-t}$ ,*

$$(2.12) \quad \begin{aligned} U(t, x) = U^*(t, x) &= \sqrt{1-t} B^* e^{x^2/(2(1-t)) - (B^*)^2/2} \Phi(x/\sqrt{1-t}) / \Phi(B^*) \\ &= \sqrt{2\pi(1-t)} (1 - (B^*)^2) e^{x^2/(2(1-t))} \Phi(x/\sqrt{1-t}), \end{aligned}$$

*and it is equal to  $x$  otherwise.*

**2.2. Two-sided exit problem.** Consider now, for fixed integer  $q > 0$ , the problem of maximizing the absolute value:

$$(2.13) \quad \bar{U}(t, x) := \sup_{t \leq \tau < 1} \mathbb{E}_{t,x}[|X_\tau|^q], \quad 0 \leq t < 1, \quad x \in \mathbb{R}.$$

It has been shown by [4] that the optimal stopping time is of the form:

$$(2.14) \quad \tau(D) := \inf\{s \geq t : |X_s| \geq D\sqrt{1-s}\}, \quad D \geq 0.$$

For  $-D\sqrt{1-t} < x < D\sqrt{1-t}$ , by [4], again solving (2.3) with desired boundary conditions,

$$(2.15) \quad \mathbb{E}_{t,x}[(1-\tau(D))^{q/2}] = (1-t)^{q/2} \frac{(F_q + G_q)(x/\sqrt{1-t})}{(F_q + G_q)(D)},$$

and hence

$$(2.16) \quad \mathbb{E}_{t,x}[|X_{\tau(D)}|^q] = D^q \mathbb{E}_{t,x}[(1-\tau(D))^{q/2}] = (1-t)^{q/2} D^q \frac{(F_q + G_q)(x/\sqrt{1-t})}{(F_q + G_q)(D)}.$$

Here notice that  $(F_q + G_q)$  is an even function.

The maximization of this expectation is equivalent to maximizing the function  $D \mapsto D^q / (F_q + G_q)(D)$ , whose derivative equals

$$\frac{\partial}{\partial D} \frac{D^q}{(F_q + G_q)(D)} = \frac{D^{q-1}}{(F_q + G_q)(D)} \left[ q - \frac{D(F_q + G_q)'(D)}{(F_q + G_q)(D)} \right], \quad D > 0.$$

Similarly to the arguments above for  $B^*$ , there exists a maximizer  $D^* > 0$ , which is a unique root of

$$(2.17) \quad 0 = q - D(F_q + G_q)'(D) / (F_q + G_q)(D),$$

and

$$(2.18) \quad \frac{\partial}{\partial D} \frac{D^q}{(F_q + G_q)(D)} > 0 \iff D < D^*, \quad D > 0.$$

We show in Figure 2 the function defined on the right-hand side of (2.17). Similarly to Lemma 2.1, we prove the following lower bound for  $D^*$ .

**Lemma 2.2.** *We have  $D^* \geq \sqrt{(q-1)/2} \vee 0$ .*

*Proof.* See Appendix A. □

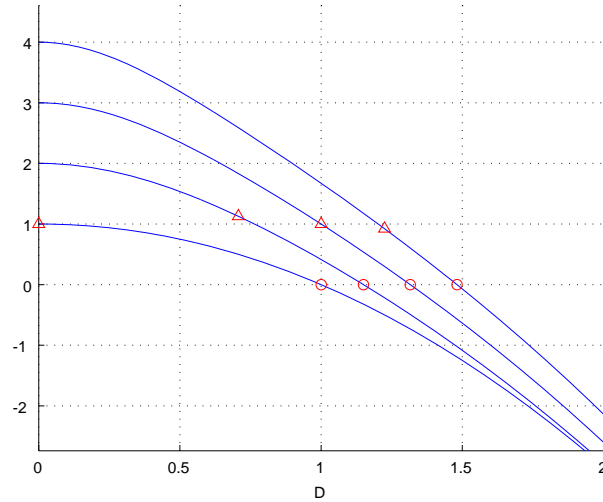


FIGURE 2. Plots of the function  $D \mapsto q - D(F_q + G_q)'(D)/(F_q + G_q)(D)$  for  $q = 1, 2, 3, 4$ . The triangles indicate the points at  $\sqrt{(q-1)/2}$ . Circles indicate the points at  $D^*$ .

Define the candidate value function  $\bar{U}^*(t, x) := \mathbb{E}_{t,x}[|X_{\tau(D^*)}|^q]$  for  $0 \leq t < 1$  and  $x \in \mathbb{R}$ . Again, Lemma 2.2 shows, for  $|x| > D^* \sqrt{1-t}$ , that

$$\mathcal{L}\bar{U}^*(t, x) = q \left[ \frac{q-1}{2} - \frac{|x|^2}{1-t} \right] |x|^{q-2} \leq 0.$$

This together with the smooth fit at  $D^* \sqrt{1-t}$  and  $-D^* \sqrt{1-t}$  verifies the optimality.

**Theorem 2.2** (Ekström and Wanntorp [4], Theorem 3.2). *An optimal stopping time for (2.13) is given by  $\tau(D^*)$  and the value function  $\bar{U}(t, x)$  is given by*

$$(2.19) \quad \bar{U}(t, x) = \bar{U}^*(t, x) = \begin{cases} (1-t)^{q/2} (D^*)^q \frac{(F_q + G_q)(x/\sqrt{1-t})}{(F_q + G_q)(D^*)}, & \text{if } |x| < D^* \sqrt{1-t}, \\ |x|^q, & \text{if } |x| \geq D^* \sqrt{1-t}. \end{cases}$$

### 3. PROBLEM 1

We first solve the optimal double stopping problem of the form:

$$V(t, x) := \sup_{t \leq \tau_1 \leq \tau_2 < 1} \mathbb{E}_{t,x}[X_{\tau_2} - X_{\tau_1}], \quad 0 \leq t < 1, \quad x \in \mathbb{R}.$$



First, by the strong Markov property, we can rewrite this as a two-stage problem:

$$(3.1) \quad V(t, x) = \sup_{t \leq \tau < 1} \mathbb{E}_{t,x} [f(\tau, X_\tau)]$$

where

$$f(t, x) := U(t, x) - x, \quad 0 \leq t < 1, \quad x \in \mathbb{R},$$

with  $U(t, x)$  defined in (2.12) as the value function of a single stopping problem.

It is expected that the first optimal stopping time is of the form

$$(3.2) \quad \tau^-(C) := \inf\{s \geq t : X_s \leq C\sqrt{1-s}\},$$

for some  $C \in \mathbb{R}$ . The corresponding second stopping time becomes  $\inf\{s \geq \tau^-(C) : X_s \geq B^*\sqrt{1-s}\}$ .

For  $C \in \mathbb{R}$  and  $x > C\sqrt{1-t}$ , by (2.4), (2.7) and symmetry,

$$\begin{aligned} \mathbb{E}_{t,x} [C\sqrt{1-\tau^-(C)}] &= \mathbb{E}_{t,x} [X_{\tau^-(C)}] = -\mathbb{E}_{t,-x} [X_{\tau^+(-C)}] \\ &= \frac{C}{\Phi(-C)} e^{-C^2/2} \sqrt{1-t} \Phi(-x/\sqrt{1-t}) e^{x^2/(2(1-t))}. \end{aligned}$$

Now we focus on the function, for  $C \leq B^*$ ,

$$(3.3) \quad V_C(t, x) := \mathbb{E}_{t,x} [f(\tau^-(C), X_{\tau^-(C)})], \quad 0 \leq t < 1, \quad x \in \mathbb{R}.$$

This becomes  $f(t, x)$  for  $x \leq C\sqrt{1-t}$  whereas for  $x > C\sqrt{1-t}$ , by (2.12),

$$\begin{aligned} V_C(t, x) &= \mathbb{E}_{t,x} \left[ \sqrt{2\pi(1-\tau^-(C))} (1 - (B^*)^2) e^{C^2/2} \Phi(C) - X_{\tau^-(C)} \right] \\ &= \left( \sqrt{2\pi(1 - (B^*)^2)} e^{C^2/2} \frac{\Phi(C)}{C} - 1 \right) \mathbb{E}_{t,x} [C\sqrt{1-\tau^-(C)}] \\ &= v(C) \sqrt{1-t} \sqrt{2\pi} \Phi(-x/\sqrt{1-t}) e^{x^2/(2(1-t))}, \end{aligned}$$

where we define

$$(3.4) \quad v(C) := \frac{1}{\Phi(-C)} \left[ (1 - (B^*)^2) \Phi(C) - C \frac{e^{-C^2/2}}{\sqrt{2\pi}} \right], \quad C \leq B^*.$$

The idea now is to identify  $C$  that maximizes  $V_C(\cdot, \cdot)$  (or equivalently  $v(\cdot)$ ) and then use a verification lemma to show the optimality of the corresponding strategy. Hence, we consider optimizing the function  $v(C)$  on  $(-\infty, B^*]$ . Figure 3 shows a plot of this function (using the definition of  $B^*$  above). It is remarked that only the maximality of  $v(C)$  and  $V_C$  over  $(-\infty, B^*]$  is needed; Lemma 3.1 below is used for the proof of Lemma 3.2, where only the maximality over  $(-\infty, B^*]$  is necessary. It is clearly suboptimal to choose  $C > B^*$  as the corresponding strategies would lead to an expected pay-off of zero at or above the boundary  $x = C\sqrt{1-t} > B^*\sqrt{1-t}$ , with the first and second stoppings happening at the same time.

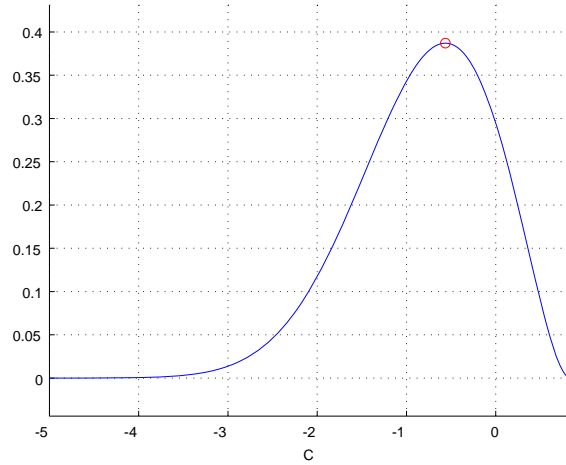


FIGURE 3. The function  $v$  on  $[-5, B^*]$ . The graph indicates that it has a unique maximum  $C^* \simeq -0.564$  (the point indicated by the circle); note that  $|C^*|$  is smaller than  $B^* \simeq 0.84$ .

**Lemma 3.1.** *There exists a unique  $C^* < 0$  that maximizes  $v(\cdot)$  over  $(-\infty, B^*]$  such that  $u(C^*) = 0$  where we define*

$$u(C) := 1 - (B^*)^2 - (1 - C^2)\Phi(-C) - \frac{C}{\sqrt{2\pi}}e^{-C^2/2}, \quad C \leq B^*.$$

*Proof.* For all  $C \leq B^*$ , using  $\Phi(C) + \Phi(-C) = 1$ ,

$$(3.5) \quad v'(C) = \frac{e^{-C^2/2}}{\sqrt{2\pi}(\Phi(-C))^2}u(C),$$

and

$$u'(C) = 2C\Phi(-C) - \frac{C^2 - 1}{\sqrt{2\pi}}e^{-C^2/2} - \frac{1}{\sqrt{2\pi}}e^{-C^2/2} + \frac{C^2}{\sqrt{2\pi}}e^{-C^2/2} = 2C\Phi(-C).$$

On  $(-\infty, 0)$ ,  $u'(C)$  is uniformly negative. Moreover,  $u(-\infty) = \infty$  and  $u(0) = 1/2 - (B^*)^2 < 0$ . Thanks to the continuity of  $u$ , this implies that there is a unique solution to the equation  $u(C) = 0$  on  $(-\infty, 0)$ , which we call  $C^*$ .

It remains to show that  $C^*$  indeed maximizes the function  $v$  over  $(-\infty, B^*]$ . From (3.5), we see that  $v'(C)$  and  $u(C)$  are of the same sign. Hence, on  $(-\infty, 0)$ ,  $v$  is strictly increasing on  $(-\infty, C^*)$  and is strictly decreasing on  $(C^*, 0)$  showing that  $C^*$  is the unique maximizer on  $(-\infty, 0]$ .

We now extend this result to the domain  $(0, B^*]$ . On  $(0, B^*]$ ,  $u'$  is uniformly positive and hence  $u$  is monotonically increasing. Hence,  $v$  will be strictly increasing on  $(z, \infty)$  as soon as  $v'(z) = 0$  (or  $u(z) = 0$ ) for some  $z > 0$ . This means that  $v$  on  $(0, B^*]$  is dominated by the maximum value of  $v(0)$  and  $v(B^*)$ . Finally, observe that  $v(B^*) = 0$  (by how  $B^*$  is chosen as in (2.11)), which is smaller than  $v(C^*)$ . This completes the proof.  $\square$

Now we define our candidate value function, for  $0 \leq t < 1$  and  $x \in \mathbb{R}$ ,

$$(3.6) \quad V^*(t, x) := V_{C^*}(t, x) = \begin{cases} \sqrt{1-t} \sqrt{2\pi} \Phi(-x/\sqrt{1-t}) e^{x^2/(2(1-t))} v(C^*), & x > C^* \sqrt{1-t} \\ f(t, x), & x \leq C^* \sqrt{1-t} \end{cases}.$$

We plot, in Figure 4, the functions  $V^*$  and  $f$  for fixed  $t = 0$  as a function of  $x$ ; this suggests Lemmas 3.2 and 3.3, which we shall prove analytically below.

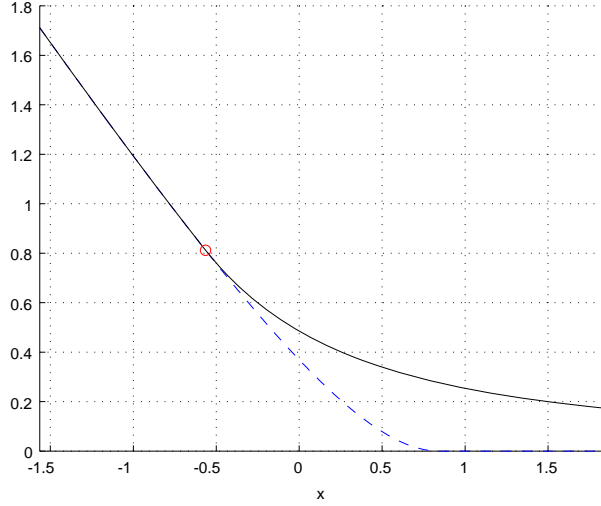


FIGURE 4. Plots of  $V^*(0, \cdot)$  (solid) and  $f(0, \cdot)$  (dotted). The circle indicates the point at  $C^*$ .

**Lemma 3.2.** *We have  $V^*(t, x) \geq f(t, x)$ , for any  $0 \leq t < 1$  and  $x \in \mathbb{R}$ .*

*Proof.* To derive the inequality, we remark that we only need to consider  $x < B^* \sqrt{1-t}$ . Indeed, for  $x \geq B^* \sqrt{1-t}$  it holds that  $V^*(t, x) \geq 0 = f(t, x)$ .

Consider  $C^* \sqrt{1-t} < x < B^* \sqrt{1-t}$ . Due to continuous fit and the maximality of  $C^*$  on  $(-\infty, B^*]$  as in Lemma 3.1, we derive that

$$V^*(t, x) = V_{C^*}(t, x) \geq V_{x/\sqrt{1-t}}(t, x) = f(t, x).$$

Finally, for  $x \leq C^* \sqrt{1-t}$ , we have  $V^*(t, x) = f(t, x)$ . □

Before we verify the optimality, we shall prove the smoothness so as to use Itô's formula. In view of (3.6),  $V^*(t, x)$  is twice-differentiable in  $x$  at any  $(t, x)$  such that  $x \neq C^* \sqrt{1-t}$ . Hence the smoothness on  $x = C^* \sqrt{1-t}$  is our only concern.

**Lemma 3.3.** *We have smooth fit:*

$$(3.7) \quad \lim_{x \downarrow C^* \sqrt{1-t}} \frac{\partial}{\partial x} V^*(t, x) = \lim_{x \uparrow C^* \sqrt{1-t}} \frac{\partial}{\partial x} f(t, x), \quad 0 \leq t < 1.$$

*Proof.* See Appendix A. □

Note that  $V^*$  is continuously differentiable in  $t$  for any  $(t, x)$  such that  $x \neq C^*\sqrt{1-t}$ ; the differentiability on  $x = C^*\sqrt{1-t}$  in  $t$  can be shown by slightly modifying the proof of Lemma 3.3.

**Lemma 3.4.** (i) For  $(t, x)$  such that  $x > C^*\sqrt{1-t}$ , we have  $\mathcal{L}V^*(t, x) = 0$ . (ii) For  $(t, x)$  such that  $x < C^*\sqrt{1-t}$ , we have  $\mathcal{L}V^*(t, x) \leq 0$ .

*Proof.* (i) It is clear by the construction of the expected value as a solution to the ODE (2.3).

(ii) As  $V^*(t, x) = U(t, x) - x$  and because  $\mathcal{L}U(t, x) = 0$  for  $x < C^*\sqrt{1-t} < B^*\sqrt{1-t}$  in view of (2.12),

$$\mathcal{L}V^*(t, x) = \mathcal{L}U(t, x) + \frac{x}{1-t} = \frac{x}{1-t},$$

which is negative as  $x < C^*\sqrt{1-t} < 0$ . □

We now have the main result of this section.

**Theorem 3.1.** The function  $V^*$  as defined in (3.6) is the value function. Namely,  $V(t, x) = V^*(t, x)$  for every  $0 \leq t < 1$  and  $x \in \mathbb{R}$ ; optimal stopping times are

$$\tau_1^* := \tau^-(C^*) \quad \text{and} \quad \tau_2^* := \inf\{s \geq \tau^-(C^*) : X_s \geq B^*\sqrt{1-s}\}.$$

*Proof.* Thanks to the smooth fit as in Lemma 3.3, Itô's formula applies and, for all  $(s, X_s)$  such that  $X_s \neq C^*\sqrt{1-s}$ ,

$$(3.8) \quad dV^*(s, X_s) = \mathcal{L}V^*(s, X_s)ds + \frac{\partial}{\partial x}V^*(s, X_s)dW_s \leq \frac{\partial}{\partial x}V^*(s, X_s)dW_s,$$

where the inequality holds by Lemma 3.4.

In the problem (3.1), because stopping at or above  $B^*\sqrt{1-t}$  attains a zero payoff, which is clearly suboptimal, we can focus on stopping times  $\nu$  such that  $X_\nu < B^*\sqrt{1-\nu}$  (and hence  $f(\nu, X_\nu) > 0$ ) a.s. For any such  $[t, 1)$ -valued stopping time  $\nu$ , with  $\tau(M)$  as defined in (2.14) for  $M > B^*$ , we have

$$\mathbb{E}_{t,x}[f(\nu \wedge \tau(M), X_{\nu \wedge \tau(M)})] \leq \mathbb{E}_{t,x}[V^*(\nu \wedge \tau(M), X_{\nu \wedge \tau(M)})] \leq V^*(t, x),$$

where the first and second inequalities hold by Lemma 3.2 and (3.8), respectively.

In order to take  $M \rightarrow \infty$ , we decompose the left-hand side as

$$\mathbb{E}_{t,x}[f(\nu \wedge \tau(M), X_{\nu \wedge \tau(M)})] = \mathbb{E}_{t,x}[f(\nu, X_\nu)1_{\{\nu < \tau(M)\}}] + \mathbb{E}_{t,x}[f(\tau(M), X_{\tau(M)})1_{\{\nu \geq \tau(M)\}}].$$

The first expectation of the right-hand side converges via monotone convergence to  $\mathbb{E}_{t,x}[f(\nu, X_\nu)]$  because  $f$  is nonnegative. On the other hand,  $f(\tau(M), X_{\tau(M)})1_{\{\nu \geq \tau(M)\}}$  is uniformly integrable for  $\{\tau(M), M > B^*\}$ . Indeed,  $f(s, y) = 0$  for  $y \geq B^*\sqrt{1-s}$ . In addition, for  $y < B^*\sqrt{1-s}$ , the first equation of (2.12) gives that  $U(s, y) \leq \sqrt{1-s}B^*$ , and hence we have a bound

$$|f(s, y)| = U(s, y) - y \leq \sqrt{1-s}B^* + |y|, \quad y < B^*\sqrt{1-s}.$$

Therefore,

$$|f(\tau(M), X_{\tau(M)})|1_{\{\nu \geq \tau(M)\}} \leq \sqrt{1 - \tau(M)}B^* + |X_{\tau(M)}|,$$

which is uniformly integrable in view of (2.16) (which is maximized by setting  $D = D^*$ ). Now as  $M \rightarrow \infty$ , because  $\tau(M) \rightarrow 1$  and  $X_{\tau(M)} \rightarrow 0$  a.s., we have

$$\mathbb{E}_{t,x}[f(\tau(M), X_{\tau(M)})1_{\{\nu \geq \tau(M)\}}] \rightarrow 0.$$

In sum, we have  $\mathbb{E}_{t,x}[f(\nu, X_\nu)] \leq V^*(t, x)$ .

This together with the fact  $V^*$  is attained by an admissible stopping time  $\tau^-(C^*) \in [t, 1)$  shows the result.  $\square$

#### 4. PROBLEM 2

We now consider the problem, for given integer  $n \geq 0$ ,

$$J(t, x) := \sup_{t \leq \tau_1 \leq \tau_2 < 1} \mathbb{E}_{t,x}[(X_{\tau_2}^{2n+1} - X_{\tau_1}^{2n+1})1_{\{X_{\tau_1} \leq 0\}} + (X_{\tau_1}^{2n+1} - X_{\tau_2}^{2n+1})1_{\{X_{\tau_1} > 0\}}],$$

$$0 \leq t < 1, x \in \mathbb{R}.$$

By the strong Markov property, we can rewrite it as

$$J(t, x) = \sup_{t \leq \tau < 1} \mathbb{E}_{t,x}[g(\tau, X_\tau)],$$

where

$$g(t, x) := (U(t, x) - x^{2n+1})1_{\{x \leq 0\}} + (U(t, -x) + x^{2n+1})1_{\{x > 0\}}, \quad 0 \leq t < 1, x \in \mathbb{R}.$$

By the symmetry of  $g$  with respect to  $x$ , we expect, for some  $D \geq 0$ , that the first stopping time has a form  $\tau(D)$  defined as in (2.14); the second stopping time becomes

$$\begin{cases} \inf\{s \geq \tau(D) : X_s \geq B^*\sqrt{1-s}\}, & \text{if } X_{\tau(D)} \leq -D\sqrt{1-\tau(D)}, \\ \inf\{s \geq \tau(D) : X_s \leq -B^*\sqrt{1-s}\}, & \text{if } X_{\tau(D)} \geq D\sqrt{1-\tau(D)}. \end{cases}$$

Define the corresponding payoff by

$$J_D(t, x) := \mathbb{E}_{t,x}[g(\tau(D), X_{\tau(D)})], \quad 0 \leq t < 1, x \in \mathbb{R}.$$

We first rewrite it as a function of  $F_{2n+1}$  and  $G_{2n+1}$  as defined in (2.1).

**Lemma 4.1.** *Given  $D \geq 0$ , we have, for all  $0 \leq t < 1$  and  $-D\sqrt{1-t} \leq x \leq D\sqrt{1-t}$ ,*

$$(4.1) \quad J_D(t, x) = (1-t)^{n+1/2}(F_{2n+1} + G_{2n+1})(x/\sqrt{1-t})j(D),$$

where

$$j(D) := \frac{1}{(F_{2n+1} + G_{2n+1})(D)} \left[ D^{2n+1} + (B^*)^{2n+1} \frac{G_{2n+1}(D)}{F_{2n+1}(B^*)} \right].$$

*Proof.* Under the initial condition  $-D\sqrt{1-t} \leq x \leq D\sqrt{1-t}$ , we have  $\mathbb{P}_{t,x}$ -a.s.

$$\begin{aligned}
& g(\tau(D), X_{\tau(D)}) \\
&= (U(\tau(D), X_{\tau(D)}) - X_{\tau(D)}^{2n+1})1_{\{X_{\tau(D)} \leq 0\}} + (U(\tau(D), -X_{\tau(D)}) + X_{\tau(D)}^{2n+1})1_{\{X_{\tau(D)} > 0\}} \\
&= (U(\tau(D), -D\sqrt{1-\tau(D)}) + D^{2n+1}(1-\tau(D))^{n+1/2})1_{\{X_{\tau(D)} \leq 0\}} \\
&\quad + (U(\tau(D), -D\sqrt{1-\tau(D)}) + D^{2n+1}(1-\tau(D))^{n+1/2})1_{\{X_{\tau(D)} > 0\}} \\
&= U(\tau(D), -D\sqrt{1-\tau(D)}) + D^{2n+1}(1-\tau(D))^{n+1/2}.
\end{aligned}$$

Hence, we can write, by (2.10),

$$\begin{aligned}
J_D(t, x) &= \mathbb{E}_{t,x}[U(\tau(D), -D\sqrt{1-\tau(D)}) + D^{2n+1}(1-\tau(D))^{n+1/2}] \\
&= \mathbb{E}_{t,x}[(1-\tau(D))^{n+1/2}] \left[ D^{2n+1} + (B^*)^{2n+1} \frac{F_{2n+1}(-D)}{F_{2n+1}(B^*)} \right].
\end{aligned}$$

The proof is now complete by (2.15). □

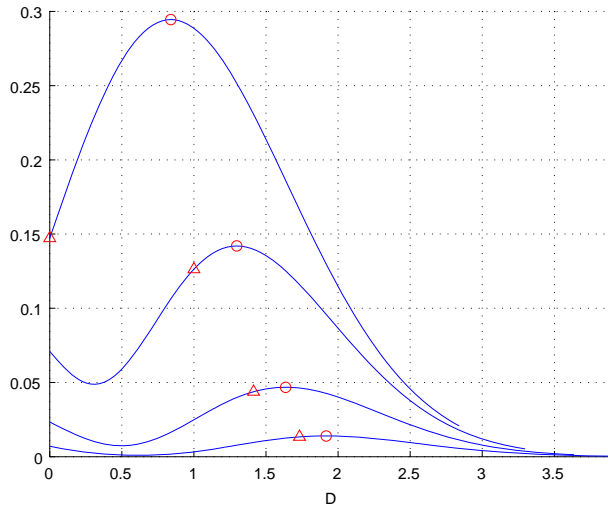


FIGURE 5. Plots of  $j$  for  $n = 0, 1, 2, 3$ . Circles indicate the points at  $B^*$  and triangles indicate the points at  $\sqrt{n}$ .

In view of (4.1), we want to maximize the function  $j$ . It turns out that it is maximized by  $B^*$  as in (2.8). See Figure 5 for a numerical plot of this function.

**Lemma 4.2.** For any  $n \geq 0$ ,  $B^*$  maximizes  $j$ .

*Proof.* For any  $D \geq 0$ ,

$$\begin{aligned} j(D) &= j(B^*) + \frac{D^{2n+1}}{(F_{2n+1} + G_{2n+1})(D)} - \frac{(B^*)^{2n+1}}{(F_{2n+1} + G_{2n+1})(D)} \frac{F_{2n+1}(D)}{F_{2n+1}(B^*)} \\ &= j(B^*) + \frac{D^{2n+1}}{(F_{2n+1} + G_{2n+1})(D)} \left[ 1 - \frac{(B^*)^{2n+1}}{D^{2n+1}} \frac{F_{2n+1}(D)}{F_{2n+1}(B^*)} \right]. \end{aligned}$$

Because  $B^*$  is the maximizer of  $B \mapsto B^{2n+1}/F_{2n+1}(B)$  (see (2.9)) and  $F_{2n+1}$  is nonnegative, we have

$$1 - \frac{(B^*)^{2n+1}}{D^{2n+1}} \frac{F_{2n+1}(D)}{F_{2n+1}(B^*)} \leq 0,$$

which shows  $j(D) \leq j(B^*)$ , as desired.  $\square$

**Remark 4.1.** We have  $j(B^*) = (B^*)^{2n+1}/F_{2n+1}(B^*)$ .

Now setting  $D = B^*$ , we have our candidate value function

$$(4.2) \quad J^*(t, x) := J_{B^*}(t, x) = \begin{cases} (1-t)^{n+1/2}(F_{2n+1} + G_{2n+1})(x/\sqrt{1-t})j(B^*), & |x| < B^*\sqrt{1-t}, \\ g(t, x), & |x| \geq B^*\sqrt{1-t}. \end{cases}$$

Figure 6 plots  $J^*$  and  $g$  for  $t = 0$  as a function of  $x$ ; this suggests Lemmas 4.3 and 4.4, which we shall prove analytically below.

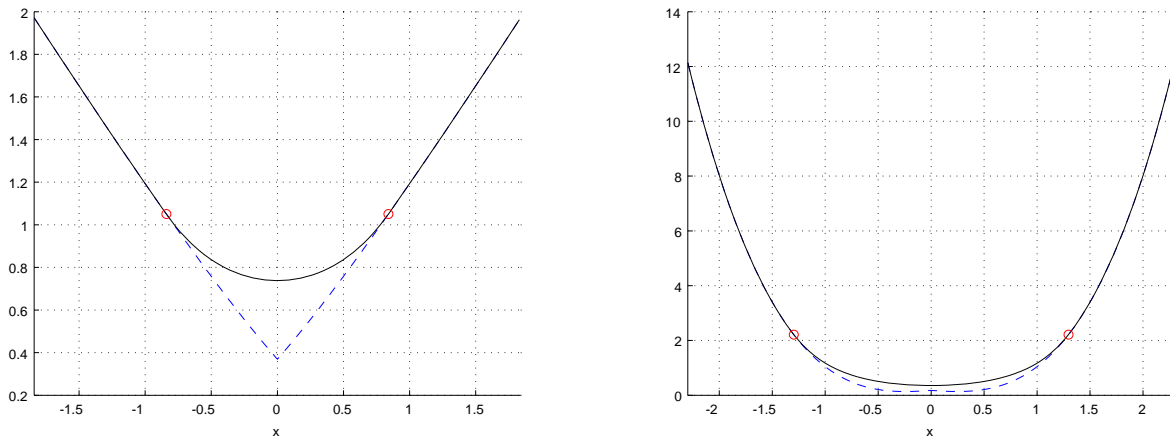


FIGURE 6. Plots of  $J^*(0, \cdot)$  (solid) and  $g(0, \cdot)$  (dotted) for  $n = 0$  (left) and  $n = 1$  (right). Circles indicate the points at  $B^*$  and  $-B^*$ .

**Lemma 4.3.** We have  $J^*(t, x) \geq g(t, x)$ , for any  $0 \leq t < 1$  and  $x \in \mathbb{R}$ .

*Proof.* Suppose  $0 < x < B^*\sqrt{1-t}$ . Due to continuous fit and the maximality of  $B^*$  on  $[0, \infty)$  we derive that

$$J^*(t, x) = J_{B^*}(t, x) \geq J_{x/\sqrt{1-t}}(t, x) = g(t, x).$$

Suppose  $0 \geq x > -B^*\sqrt{1-t}$ . By the symmetry of  $J^*$  and  $g$  with respect to  $x$ ,

$$J^*(t, x) = J^*(t, |x|) \geq g(t, |x|) = g(t, x).$$

Finally, for  $|x| \geq B^*\sqrt{1-t}$ , we have  $J^*(t, x) = g(t, x)$ .  $\square$

In view of (4.2),  $J^*(t, x)$  is twice-differentiable in  $x$  at any  $(t, x)$  such that  $|x| \neq B^*\sqrt{1-t}$ . As we shall show next, on  $|x| = B^*\sqrt{1-t}$ , differentiability holds (the differentiability with respect to  $t$  holds similarly).

**Lemma 4.4.** *We have smooth fit: for all  $0 \leq t < 1$ ,*

$$\begin{aligned} \lim_{x \uparrow B^*\sqrt{1-t}} \frac{\partial}{\partial x} J^*(t, x) &= \lim_{x \downarrow B^*\sqrt{1-t}} \frac{\partial}{\partial x} g(t, x), \\ \lim_{x \downarrow -B^*\sqrt{1-t}} \frac{\partial}{\partial x} J^*(t, x) &= \lim_{x \uparrow -B^*\sqrt{1-t}} \frac{\partial}{\partial x} g(t, x). \end{aligned}$$

*Proof.* See Appendix A.  $\square$

**Lemma 4.5.** (i) For  $(t, x)$  such that  $|x| < B^*\sqrt{1-t}$ , we have  $\mathcal{L}J^*(t, x) = 0$ . (ii) For  $(t, x)$  such that  $|x| > B^*\sqrt{1-t}$ , we have  $\mathcal{L}J^*(t, x) \leq 0$ .

*Proof.* (i) This holds immediately in view of (4.2) by the fact that  $F_{2n+1} + G_{2n+1}$  solves the ODE (2.3).

(ii) For  $x > B^*\sqrt{1-t}$ , as  $J^*(t, x) = U(t, -x) + x^{2n+1}$  and because  $\mathcal{L}U(t, -x) = 0$  for  $-x < 0 < B^*\sqrt{1-t}$  in view of (2.10),

$$\mathcal{L}J^*(t, x) = \mathcal{L}U(t, -x) + (2n+1) \left[ n - \frac{x^2}{1-t} \right] x^{2n-1} = -(2n+1) \left[ \frac{x^2}{1-t} - n \right] |x|^{2n-1}.$$

For  $x < -B^*\sqrt{1-t}$ , as  $J^*(t, x) = U(t, x) - x^{2n+1}$  and because  $\mathcal{L}U(t, x) = 0$  for  $x < 0 < B^*\sqrt{1-t}$ ,

$$\mathcal{L}J^*(t, x) = \mathcal{L}U(t, x) - (2n+1) \left[ n - \frac{x^2}{1-t} \right] x^{2n-1} = -(2n+1) \left[ \frac{x^2}{1-t} - n \right] |x|^{2n-1}.$$

Hence, the proof is complete by Lemma 2.1.  $\square$

By Lemmas 4.4 and 4.5, the verification of optimality is immediate. We omit the proof of the following theorem because it is essentially the same as that of Theorem 3.1.

**Theorem 4.1.** *The function  $J^*$  is the value function. Namely,  $J(t, x) = J^*(t, x)$  for every  $0 \leq t < 1$  and  $x \in \mathbb{R}$ ; optimal stopping times are*

$$\begin{aligned} \tau_1^* &:= \tau(B^*), \\ \tau_2^* &:= \begin{cases} \inf\{s \geq \tau(B^*) : X_s \geq B^*\sqrt{1-s}\}, & \text{if } X_{\tau(B^*)} \leq -B^*\sqrt{1-\tau(B^*)}, \\ \inf\{s \geq \tau(B^*) : X_s \leq -B^*\sqrt{1-s}\}, & \text{if } X_{\tau(B^*)} \geq B^*\sqrt{1-\tau(B^*)}. \end{cases} \end{aligned}$$



## 5. PROBLEM 3

Our last problem is to solve, for fixed  $q > 0$ ,

$$(5.1) \quad W(t, x) := \sup_{t \leq \tau_1 \leq \tau_2 < 1} \mathbb{E}_{t,x} [|X_{\tau_2}|^q - |X_{\tau_1}|^q], \quad 0 \leq t < 1, x \in \mathbb{R}.$$

By the strong Markov property, it can be written

$$(5.2) \quad W(t, x) = \sup_{t \leq \tau < 1} \mathbb{E}_{t,x} [h(\tau, X_\tau)], \quad 0 \leq t < 1, x \in \mathbb{R},$$

where

$$h(t, x) := \begin{cases} \bar{U}(t, x) - |x|^q, & \text{if } |x| < D^* \sqrt{1-t}, \\ 0, & \text{if } |x| \geq D^* \sqrt{1-t}. \end{cases}$$

Here  $\bar{U}(t, x)$  is the value function of the problem (2.13) and is written as (2.19) with the same  $D^*$  that satisfies (2.18).

It is easily conjectured that the optimal stopping time for the problem (5.2) is given by

$$\sigma(A) := \inf\{s \geq t : |X_s| \leq A\sqrt{1-s}\},$$

for some  $A \in [0, D^*]$ . Let us define its corresponding expected payoff by

$$W_A(t, x) := \mathbb{E}_{t,x} [h(\sigma(A), X_{\sigma(A)})], \quad 0 \leq t < 1, x \in \mathbb{R}.$$

**Lemma 5.1.** *For all  $(t, x)$  such that  $|x| \geq A\sqrt{1-t}$ ,*

$$(5.3) \quad W_A(t, x) = (1-t)^{q/2} G_q(|x|/\sqrt{1-t}) w(A),$$

where we define

$$w(A) := \frac{1}{G_q(A)} \left[ (D^*)^q \frac{(F_q + G_q)(A)}{(F_q + G_q)(D^*)} - A^q \right], \quad 0 \leq A \leq D^*.$$

*Proof.* Suppose first that  $x \geq A\sqrt{1-t}$  (then we must have  $X_{\sigma(A)} = A\sqrt{1-\sigma(A)}$  a.s.). By (2.19),

$$(5.4) \quad W_A(t, x) = \mathbb{E}_{t,x} [(1-\sigma(A))^{q/2}] \left[ (D^*)^q \frac{(F_q + G_q)(A)}{(F_q + G_q)(D^*)} - A^q \right],$$

and hence the problem boils down to computing the expectation on the right-hand side. As we have discussed in Section 2, we can write

$$\mathbb{E}_{t,x} [(1-\sigma(A))^{q/2}] = (1-t)^{q/2} \zeta(x/\sqrt{1-t}),$$

where the function  $\zeta$  satisfies the ODE (2.3) with boundary conditions  $\zeta(A) = 1$  and  $\lim_{y \rightarrow \infty} \zeta(y) = 0$ . A general solution of (2.3) is given by  $\zeta(y) = \alpha F_q(y) + \beta G_q(y)$ , with the values of  $\alpha$  and  $\beta$  to be determined. Because  $\lim_{y \rightarrow \infty} F_q(y) = \infty$  and  $\lim_{y \rightarrow \infty} G_q(y) = 0$ , we must have  $\alpha = 0$ . Solving  $\zeta(A) = 1$ , we have  $\beta = G_q(A)^{-1}$ . Plugging this in the right-hand side of (5.4) gives (5.3).

Finally, by symmetry, we have  $W_A(t, x) = W_A(t, -x)$ ,  $x \geq 0$ . Hence, the result can be extended to  $x \leq -A\sqrt{1-t}$  as well.  $\square$

In view of (5.3), we shall maximize the function  $w$ . As shown in Figure 7,  $w$  admits a unique maximizer. We shall show this analytically in Lemma 5.2 below. Notice that

$$(5.5) \quad w(0) = \frac{2(D^*)^q}{(F_q + G_q)(D^*)} > 0 \quad \text{and} \quad w(D^*) = 0,$$

and, for all  $A > 0$ ,

$$(5.6) \quad w'(A) = \left[ (D^*)^q \frac{(F_q + G_q)'(A)}{(F_q + G_q)(D^*)} - qA^{q-1} \right] \frac{1}{G_q(A)} - \left[ (D^*)^q \frac{(F_q + G_q)(A)}{(F_q + G_q)(D^*)} - A^q \right] \frac{G'_q(A)}{(G_q(A))^2}.$$

**Lemma 5.2.** (1) *There exists a unique maximizer of  $w$  over  $[0, D^*]$ , which we call  $A^*$ , such that*

$$(5.7) \quad A^* \leq \sqrt{(q-1)/2} \vee 0$$

and

$$(5.8) \quad w'(A) \leq 0 \iff A \geq A^*, \quad 0 \leq A \leq D^*.$$

(2) *Moreover,  $A^* = 0$  if and only if  $q \leq 1$ .*

*Proof.* (1) For all  $A > 0$ , let us define

$$L(A) := \frac{(F_q + G_q)'(A)G_q(A) - (F_q + G_q)(A)G'_q(A)}{(G_q(A))^2} = \frac{F'_q(A)G_q(A) - F_q(A)G'_q(A)}{(G_q(A))^2} > 0.$$

Then, for any  $A > 0$ ,

$$(5.9) \quad \begin{aligned} \frac{w'(A)}{L(A)} &= \frac{1}{L(A)} \left[ -\frac{qA^{q-1}}{G_q(A)} + \frac{A^q G'_q(A)}{(G_q(A))^2} \right] + \frac{(D^*)^q}{(F_q + G_q)(D^*)} \\ &= \frac{-qA^{q-1}G_q(A) + A^q G'_q(A)}{F'_q(A)G_q(A) - F_q(A)G'_q(A)} + \frac{(D^*)^q}{(F_q + G_q)(D^*)}. \end{aligned}$$

Because  $F_q$  and  $G_q$  satisfy the ODE (2.3),

$$F''_q(A) = AF'_q(A) + qF_q(A) \quad \text{and} \quad G''_q(A) = AG'_q(A) + qG_q(A).$$

This gives

$$\begin{aligned} F''_q(A)G_q(A) - F_q(A)G''_q(A) &= [AF'_q(A) + qF_q(A)]G_q(A) - F_q(A)[AG'_q(A) + qG_q(A)] \\ &= A[F'_q(A)G_q(A) - F_q(A)G'_q(A)]. \end{aligned}$$

Now differentiating (5.9) with respect to  $A$ ,

$$\begin{aligned}
& [F'_q(A)G_q(A) - F_q(A)G'_q(A)]^2 \frac{\partial}{\partial A} \frac{w'(A)}{L(A)} \\
&= [-q(q-1)A^{q-2}G_q(A) + A^q G''_q(A)][F'_q(A)G_q(A) - F_q(A)G'_q(A)] \\
&\quad - [-qA^{q-1}G_q(A) + A^q G'_q(A)][F''_q(A)G_q(A) - F_q(A)G''_q(A)] \\
&= [-q(q-1)A^{q-2}G_q(A) + A^{q+1}G'_q(A) + qA^q G_q(A)][F'_q(A)G_q(A) - F_q(A)G'_q(A)] \\
&\quad - [-qA^q G_q(A) + A^{q+1}G'_q(A)][F''_q(A)G_q(A) - F_q(A)G''_q(A)] \\
&= 2qA^{q-2}G_q(A)[F'_q(A)G_q(A) - F_q(A)G'_q(A)][A^2 - (q-1)/2].
\end{aligned}$$

That is,  $w'(A)/L(A)$  is differentiable and

$$\frac{F'_q(A)G_q(A) - F_q(A)G'_q(A)}{2qA^{q-2}G_q(A)} \frac{\partial}{\partial A} \frac{w'(A)}{L(A)} = A^2 - \frac{q-1}{2}.$$

Notice that  $F'_q(A)G_q(A) - F_q(A)G'_q(A)$  and  $G_q(A)$  are both positive for  $A > 0$ . Hence we see that

$$\frac{\partial}{\partial A} \frac{w'(A)}{L(A)} > 0 \iff A > \sqrt{(q-1)/2} \vee 0, \quad A > 0.$$

Recall  $D^*$  or the unique root of the equation (2.17). The equivalence above together with  $w'(D^*) = 0$  (and  $w'(D^*)/L(D^*) = 0$ ) and recalling that  $D^* \geq \sqrt{(q-1)/2} \vee 0$  (as in Lemma 2.2) and  $L(\cdot) > 0$  shows that there exists a unique  $A^* \in [0, \sqrt{(q-1)/2} \vee 0]$  such that, for all  $0 < A < D^*$ ,

$$(5.10) \quad w'(A) \leq 0 \iff A \geq A^*,$$

as desired.

(2) Suppose first that  $q \leq 1$ . Then  $A^* \leq \sqrt{(q-1)/2} \vee 0 = 0$  and hence we must have  $A^* = 0$ . Now suppose  $q > 1$ . Then, by taking a limit in (5.6) and noticing that  $(F_q + G_q)'(0) = 0$ ,

$$w'(0+) = -(D^*)^q \frac{(F_q + G_q)(0)}{(F_q + G_q)(D^*)} \frac{G'_q(0)}{(G_q(0))^2} > 0.$$

This together with (5.10) shows  $A^* > 0$ .

□

Now we define

$$(5.11) \quad W^*(t, x) := W_{A^*}(t, x) = \begin{cases} (1-t)^{q/2} G_q(|x|/\sqrt{1-t}) w(A^*), & |x| > A^* \sqrt{1-t}, \\ h(t, x), & |x| \leq A^* \sqrt{1-t}, \end{cases}$$

as our candidate value function, and verify the optimality. Figure 8 plots  $W^*$  and  $h$  for  $t = 0$  as a function of  $x$ ; this suggests Lemmas 5.3 and 5.4, which we shall prove analytically below.

**Lemma 5.3.** *We have  $W^*(t, x) \geq h(t, x)$  for  $0 \leq t < 1$  and  $x \in \mathbb{R}$ .*

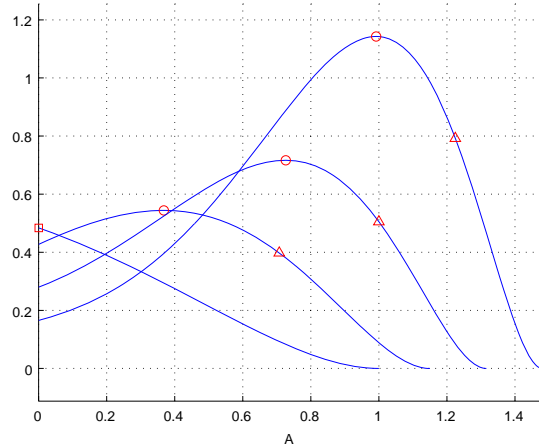


FIGURE 7. Plots of  $w(A)$  on  $[0, D^*]$  for  $q = 1, 2, 3, 4$ . For  $q = 2, 3, 4$ , the circles (resp. triangles) indicate the points at  $A^*$  (resp.  $\sqrt{(q-1)/2}$ ). For  $q = 1$ , the square indicates the point at  $A^* = \sqrt{(q-1)/2} = 0$ .

*Proof.* Due to the symmetry of both  $W^*$  and  $h$  with respect to  $x$ , it is sufficient to show for  $x \geq 0$ .

When  $x \geq D^*\sqrt{1-t}$ , then  $W^*(t, x) \geq 0 = h(t, x)$ . When  $0 \leq x \leq A^*\sqrt{1-t}$ , then  $W^*(t, x) = h(t, x)$  by definition. Finally, if  $A^*\sqrt{1-t} < x < D^*\sqrt{1-t}$ , due to continuous fit and the maximality of  $A^*$  on  $[0, \infty)$  we derive that  $W^*(t, x) = W_{A^*}(t, x) \geq W_{x/\sqrt{1-t}}(t, x) = h(t, x)$ , as desired.  $\square$

Similarly to Problems 1 and 2,  $W^*(t, x)$  is smooth enough to apply Itô's formula at any  $(t, x)$  such that  $|x| \neq A^*\sqrt{1-t}$ ; see also (5.14) below regarding the smoothness at 0 when  $A^* \neq 0$ . Regarding the smoothness on  $|x| = A^*\sqrt{1-t}$ , we have the following.

**Lemma 5.4.** Fix  $0 \leq t < 1$ . (i) If  $A^* > 0$ , then smooth fit

$$(5.12) \quad \begin{aligned} \lim_{x \downarrow A^*\sqrt{1-t}} \frac{\partial}{\partial x} W^*(t, x) &= \lim_{x \uparrow A^*\sqrt{1-t}} \frac{\partial}{\partial x} h(t, x), \\ \lim_{x \uparrow -A^*\sqrt{1-t}} \frac{\partial}{\partial x} W^*(t, x) &= \lim_{x \downarrow -A^*\sqrt{1-t}} \frac{\partial}{\partial x} h(t, x), \end{aligned}$$

holds. (ii) If  $A^* = 0$ , we have an inequality

$$(5.13) \quad \lim_{x \downarrow 0} \frac{\partial}{\partial x} W^*(t, x) < \lim_{x \uparrow 0} \frac{\partial}{\partial x} W^*(t, x).$$

*Proof.* (i) We have

$$\lim_{x \downarrow A^*\sqrt{1-t}} \frac{\partial}{\partial x} W^*(t, x) = (1-t)^{(q-1)/2} \frac{G'_q(A^*)}{G_q(A^*)} \left[ (D^*)^q \frac{(F_q + G_q)(A^*)}{(F_q + G_q)(D^*)} - (A^*)^q \right].$$

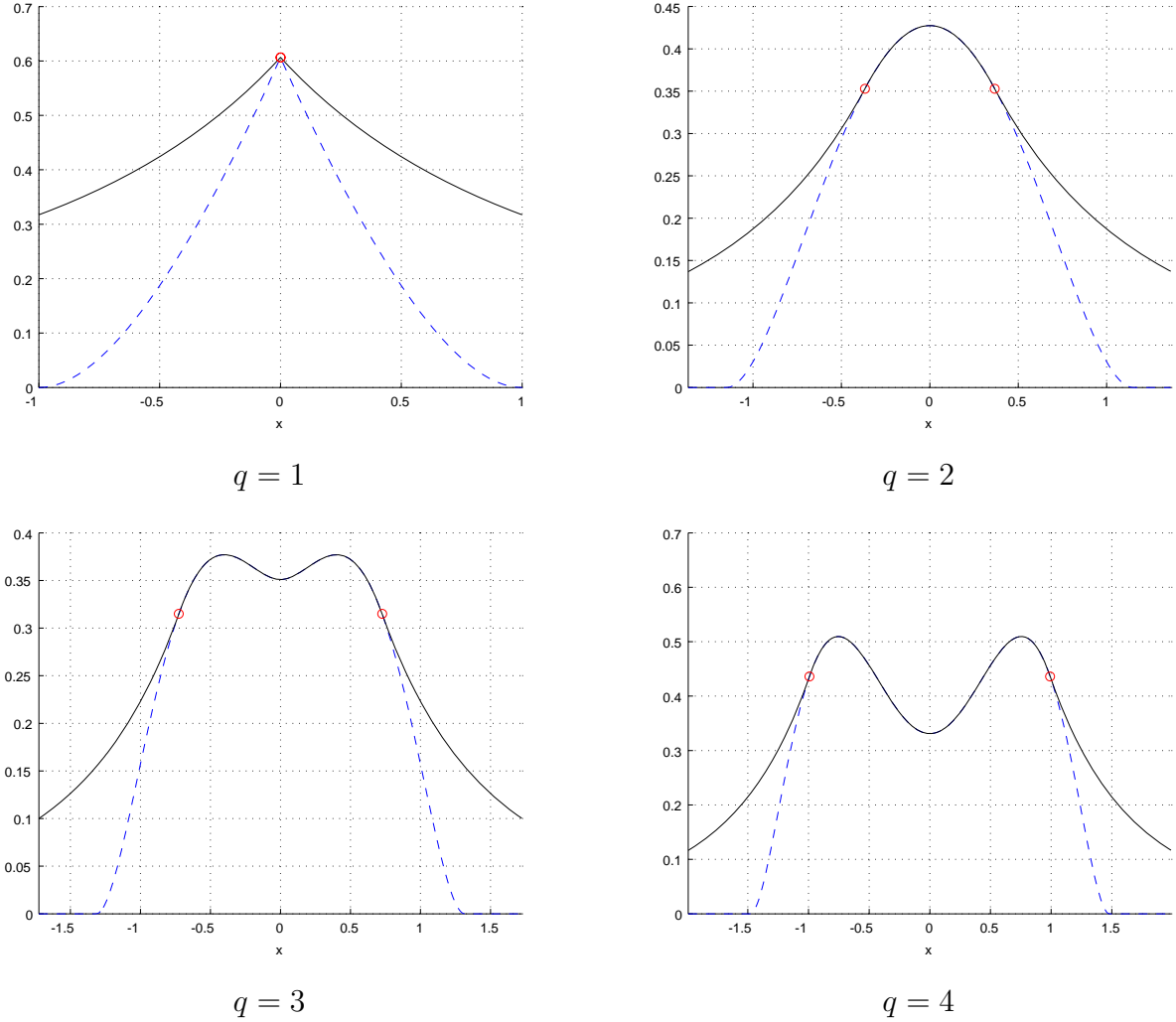


FIGURE 8. Plots of  $W^*(0, \cdot)$  (solid) and  $h(0, \cdot)$  (dotted) for  $q = 1, 2, 3, 4$ . Circles indicate the points at  $A^*$  and  $-A^*$ .

On the other hand,

$$\lim_{x \uparrow A^* \sqrt{1-t}} \frac{\partial}{\partial x} h(t, x) = (1-t)^{(q-1)/2} \left[ (D^*)^q \frac{(F_q + G_q)'(A^*)}{(F_q + G_q)(D^*)} - q(A^*)^{q-1} \right].$$

When  $A^* > 0$ , Lemma 5.2 implies  $w'(A^*) = 0$ . In view of (5.6), the two equations above are the same. Hence the first equality of (5.12) holds. The proof of the second equality holds by symmetry.

(ii) Now suppose  $A^* = 0$ . In this case, by (5.5),

$$W^*(t, x) = 2(1-t)^{q/2} (D^*)^q \frac{G_q(|x|/\sqrt{1-t})}{(F_q + G_q)(D^*)},$$

and hence taking derivatives and then limits,

$$\begin{aligned}\lim_{x \downarrow 0} \frac{\partial}{\partial x} W^*(t, x) &= 2(1-t)^{(q-1)/2} (D^*)^q \frac{G'_q(0)}{(F_q + G_q)(D^*)}, \\ \lim_{x \uparrow 0} \frac{\partial}{\partial x} W^*(t, x) &= -2(1-t)^{(q-1)/2} (D^*)^q \frac{G'_q(0)}{(F_q + G_q)(D^*)}.\end{aligned}$$

Because  $F_q$  and  $G_q$  are nonnegative and  $G'_q$  is negative, we have (5.13), as desired.  $\square$

**Lemma 5.5.** (i) For  $(t, x)$  such that  $|x| > A^* \sqrt{1-t}$ , we have  $\mathcal{L}W^*(t, x) = 0$ . (ii) If  $A^* > 0$ , for  $(t, x)$  such that  $0 < |x| < A^* \sqrt{1-t}$ , we have  $\mathcal{L}W^*(t, x) \leq 0$ .

*Proof.* (i) It is clear by the fact that  $G_q$  solves the ODE (2.3) in view of (5.11).

(ii) By Lemma 5.2(2),  $A^* > 0$  guarantees  $q > 1$ . Because  $|x| < A^* \sqrt{1-t} < D^* \sqrt{1-t}$ , we must have  $\mathcal{L}\bar{U}(t, x) = 0$  in view of (2.19).

For  $0 < x < A^* \sqrt{1-t}$ , as  $W^*(t, x) = \bar{U}(t, x) - x^q$ , we have

$$\mathcal{L}W^*(t, x) = - \left[ (q-1)/2 - x^2/(1-t) \right] qx^{q-2}$$

whereas, for  $-A^* \sqrt{1-t} < x < 0$ , we have  $\mathcal{L}W^*(t, x) = - \left[ (q-1)/2 - x^2/(1-t) \right] q|x|^{q-2}$ . Now (5.7) completes the proof.  $\square$

We now have the following optimality results by Lemmas 5.3, 5.4 and 5.5. An important difference with the verification of Problems 1 and 2 is the potential non-differentiability at  $x = 0$ , but this does not cause any issue.

Recall from (5.13) that, for the case  $A^* = 0$ , the smooth fit at  $A^*$  fails. However, this can be resolved easily by using the following version of Itô's formula (see, e.g., [10]), for all  $t \leq u < 1$ ,

$$\begin{aligned}W^*(u, X_u) &= W^*(t, x) + \int_t^u \mathcal{L}W^*(s, X_s) 1_{\{X_s \neq 0\}} ds \\ &\quad + \frac{1}{2} \int_t^u \left( \lim_{z \downarrow 0} \frac{\partial}{\partial z} W^*(s, z) - \lim_{z \uparrow 0} \frac{\partial}{\partial z} W^*(s, z) \right) dl_s^0 + \int_t^u \frac{\partial}{\partial x} W^*(s, X_s) 1_{\{X_s \neq 0\}} dW_s,\end{aligned}$$

where  $\{l_s^0\}_{t \leq s < 1}$  denotes the local time of  $X$  at 0. The supermartingale property of the process  $\{W^*(u, X_u)\}_{t \leq u \leq 1}$  still holds by (5.13) and Lemma 5.5. For the case  $A^* > 0$ , Lemma 5.2(2) guarantees that  $q > 1$ ; in this case,

$$(5.14) \quad \lim_{z \downarrow 0} \frac{\partial}{\partial z} W^*(s, z) = \lim_{z \downarrow 0} \frac{\partial}{\partial z} h(s, z) = \lim_{z \uparrow 0} \frac{\partial}{\partial z} h(s, z) = \lim_{z \uparrow 0} \frac{\partial}{\partial z} W^*(s, z),$$

by using the equality  $(F_q + G_q)'(0) = 0$  and  $x^{q-1} \rightarrow 0$  as  $x \rightarrow 0$ . The rest of the proof is omitted as it is similar to that of Theorem 3.1.

**Theorem 5.1.** *The function  $W^*$  is the value function. Namely,  $W(t, x) = W^*(t, x)$  for every  $0 \leq t < 1$  and  $x \in \mathbb{R}$ ; optimal stopping times are*

$$\tau_1^* := \sigma(A^*) \quad \text{and} \quad \tau_2^* := \inf\{s \geq \sigma(A^*) : |X_s| \geq D^* \sqrt{1-s}\}.$$

#### APPENDIX A. PROOFS

*Proof of Lemma 2.1.* The case  $n = 0$  is trivial (as  $B^* > 0$ ) and hence we shall focus on the case  $n \geq 1$ .

Assume for contradiction that  $B^* < \sqrt{n}$ . Then we can take  $(t, x)$  such that  $x/\sqrt{1-t} \in (B^*, \sqrt{n})$ . By Itô's formula

$$(A.1) \quad dX_s^{2n+1} = (2n+1) \left[ n - \frac{X_s^2}{1-s} \right] X_s^{2n-1} ds + (2n+1) X_s^{2n} dW_s, \quad t \leq s < 1.$$

Define the first downcrossing time of  $X$ :

$$(A.2) \quad T^-(\delta) := \inf\{u \geq t : X_u \leq \delta\}, \quad \delta \geq 0.$$

Fix  $0 < \varepsilon < x$ . For  $s \in [t, \tau^+(\sqrt{n}) \wedge T^-(\varepsilon)]$ , we have  $\varepsilon/\sqrt{1-s} \leq X_s/\sqrt{1-s} \leq \sqrt{n}$  (and hence  $\varepsilon \leq X_s \leq \sqrt{n}\sqrt{1-s}$ ). Therefore, taking expectation of the integral of (A.1) gives

$$\begin{aligned} \mathbb{E}_{t,x}[X_{\tau^+(\sqrt{n}) \wedge T^-(\varepsilon)}^{2n+1}] &= x^{2n+1} + \mathbb{E}_{t,x} \left[ \int_t^{\tau^+(\sqrt{n}) \wedge T^-(\varepsilon)} (2n+1) \left[ n - \frac{X_s^2}{1-s} \right] X_s^{2n-1} ds \right] \\ &\geq x^{2n+1}. \end{aligned}$$

Dominated convergence gives upon  $\varepsilon \downarrow 0$  that  $\mathbb{E}_{t,x}[X_{\tau^+(\sqrt{n}) \wedge T^-(0)}^{2n+1}] \geq x^{2n+1}$ . Moreover, because  $X_{\tau^+(\sqrt{n})}^{2n+1} \geq X_{\tau^+(\sqrt{n}) \wedge T^-(0)}^{2n+1}$  a.s., we also have  $\mathbb{E}_{t,x}[X_{\tau^+(\sqrt{n})}^{2n+1}] \geq x^{2n+1}$ .

On the other hand, by (2.7) and (2.9), and because  $\sqrt{n} > x/\sqrt{1-t} > B^*$ , we must have

$$x^{2n+1} = \mathbb{E}_{t,x}[X_{\tau^+(x/\sqrt{1-t})}^{2n+1}] > \mathbb{E}_{t,x}[X_{\tau^+(\sqrt{n})}^{2n+1}].$$

This is a contradiction, and hence  $B^* \geq \sqrt{n}$ . □

*Proof of Lemma 2.2.* Because the case  $q \leq 1$  is trivial, we focus on the case  $q > 1$ . Assume for contradiction that  $D^* < \sqrt{(q-1)/2}$ . Then we can take  $(t, x)$  such that  $x/\sqrt{1-t} \in (D^*, \sqrt{(q-1)/2})$ .

Arguments similar to the ones in the proof of Lemma 2.1 give

$$\mathbb{E}_{t,x}[|X_{\tau(\sqrt{(q-1)/2}) \wedge T^-(0)}|^q] = \mathbb{E}_{t,x}[X_{\tau(\sqrt{(q-1)/2}) \wedge T^-(0)}^q] \geq x^q,$$

where  $T^-(0)$  is defined as in (A.2). Moreover, because  $|X_{\tau(\sqrt{(q-1)/2})}|^q \geq X_{\tau(\sqrt{(q-1)/2}) \wedge T^-(0)}^q$  a.s., we also have  $\mathbb{E}_{t,x}[|X_{\tau(\sqrt{(q-1)/2})}|^q] \geq x^q$ .

On the other hand, by (2.16) and (2.18), and because  $\sqrt{(q-1)/2} > x/\sqrt{1-t} > D^*$ , we must have

$$x^q = \mathbb{E}_{t,x}[|X_{\tau(x/\sqrt{1-t})}|^q] > \mathbb{E}_{t,x}[|X_{\tau(\sqrt{(q-1)/2})}|^q].$$

This is a contradiction, as desired. □

*Proof of Lemma 3.3.* Differentiating (3.6),

$$\frac{\partial}{\partial x} V^*(t, x) = v(C^*) \sqrt{2\pi} \left( \frac{x}{\sqrt{1-t}} e^{x^2/(2(1-t))} \Phi(-x/\sqrt{1-t}) - \frac{1}{\sqrt{2\pi}} \right),$$

and hence

$$\begin{aligned} \lim_{x \downarrow C^* \sqrt{1-t}} \frac{\partial}{\partial x} V^*(t, x) &= v(C^*) \sqrt{2\pi} \left( C^* e^{(C^*)^2/2} \Phi(-C^*) - \frac{1}{\sqrt{2\pi}} \right) \\ &= C^* \sqrt{2\pi} (1 - (B^*)^2) e^{(C^*)^2/2} \Phi(C^*) - (C^*)^2 - \frac{\Phi(C^*)}{\Phi(-C^*)} (1 - (B^*)^2) + C^* \frac{1}{\sqrt{2\pi}} \frac{1}{\Phi(-C^*)} e^{-(C^*)^2/2}. \end{aligned}$$

On the other hand,

$$\lim_{x \uparrow C^* \sqrt{1-t}} \frac{\partial}{\partial x} f(t, x) = \sqrt{2\pi} (1 - (B^*)^2) C^* e^{(C^*)^2/2} \Phi(C^*) - (B^*)^2.$$

Taking the difference between the two

$$\begin{aligned} &\lim_{x \downarrow C^* \sqrt{1-t}} \frac{\partial}{\partial x} V^*(t, x) - \lim_{x \uparrow C^* \sqrt{1-t}} \frac{\partial}{\partial x} f(t, x) \\ &= 1 - (C^*)^2 - \left( 1 + \frac{\Phi(C^*)}{\Phi(-C^*)} \right) (1 - (B^*)^2) + C^* \frac{1}{\sqrt{2\pi}} \frac{1}{\Phi(-C^*)} e^{-(C^*)^2/2} \\ &= \frac{1}{\Phi(-C^*)} \left[ \Phi(-C^*) (1 - (C^*)^2) - (\Phi(-C^*) + \Phi(C^*)) (1 - (B^*)^2) + C^* \frac{1}{\sqrt{2\pi}} e^{-(C^*)^2/2} \right] \\ &= -\frac{u(C^*)}{\Phi(-C^*)}, \end{aligned}$$

which equals 0 thanks to our choice of  $C^*$  as in Lemma 3.1.  $\square$

*Proof of Lemma 4.4.* We show the differentiability at  $x = B^* \sqrt{1-t}$  (that of  $x = -B^* \sqrt{1-t}$  holds by symmetry). Differentiating (4.2) with respect to  $x$  gives

$$\frac{\partial}{\partial x} J^*(t, x) = (1-t)^n (F_{2n+1} + G_{2n+1})'(x/\sqrt{1-t}) j(B^*),$$

and by Remark 4.1,

$$\begin{aligned} \lim_{x \uparrow B^* \sqrt{1-t}} \frac{\partial}{\partial x} J^*(t, x) &= (1-t)^n (B^*)^{2n+1} \frac{(F_{2n+1} + G_{2n+1})'(B^*)}{F_{2n+1}(B^*)} \\ \text{(A.3)} \quad &= (1-t)^n (B^*)^{2n+1} \frac{F'_{2n+1}(B^*) - F'_{2n+1}(-B^*)}{F_{2n+1}(B^*)}. \end{aligned}$$

On the other hand,

$$\frac{\partial}{\partial x} g(t, x) = -(1-t)^n (B^*)^{2n+1} \frac{F'_{2n+1}(-x/\sqrt{1-t})}{F_{2n+1}(B^*)} + (2n+1)x^{2n}.$$

Hence,

$$\lim_{x \downarrow B^* \sqrt{1-t}} \frac{\partial}{\partial x} g(t, x) = -(1-t)^n (B^*)^{2n+1} \left[ \frac{F'_{2n+1}(-B^*)}{F_{2n+1}(B^*)} - \frac{2n+1}{B^*} \right],$$



which equals (A.3) by (2.8), as desired. □

#### ACKNOWLEDGEMENTS

The authors thank the anonymous referee for his/her insightful comments. E. J. Baurdoux was visiting CIMAT, Guanajuato when part of this work was carried out and he is grateful for their hospitality and support. B. A. Surya acknowledges the support by the Department of IEOR of Columbia University during his stay. K. Yamazaki is in part supported by MEXT KAKENHI Grant Number 26800092, the Inamori foundation research grant, and the Kansai University Subsidy for Supporting young Scholars 2014.

#### REFERENCES

- [1] ABRAMOWITZ, M AND STEGUN, I. A. (1972) Handbook of mathematical functions: with formulas, graphs, and mathematical tables. *Courier Dover Publications*, No. 55.
- [2] AVELLANEDA, M. AND LIPKIN, M.D. (2003) A market-induced mechanism for stock pinning. *Quant. Finance* **3**, 417–425.
- [3] EKSTRÖM, E., LINDBERG, C. AND TYSK, J. (2011) Optimal liquidation of a pairs trade. *Advanced mathematical methods for finance*, 247–255.
- [4] EKSTRÖM, E. AND WANNTORP, H. (2009). Optimal stopping of a Brownian bridge. *J. Appl. Probab.* **46**, 170–180.
- [5] GALLEGO, G. AND VAN RYZIN, G. (1994). Optimal dynamic pricing of inventories with stochastic demand over finite horizons. *Management Science* **40** (8), 999–1020.
- [6] IVASHKO, A. A. (2014). Gain maximization problem in the urn scheme. Transactions of Karelian Research Centre of Russian Academy of Science. No 4. Mathematical Modeling and Information Technologies. Vol. 5. Petrozavodsk: KarRC RAS (in Russian).
- [7] LEUNG, T., LI, X. (2013) Optimal mean reversion trading with transaction cost and stop-loss exit. *Preprint*.
- [8] LIN, T. C.W. (2013). The New Investor. *UCLA Law Review* **60** (3), 678–735.
- [9] MAZALOV, V. V., AND TAMAKI, M. (2007). Duration problem on trajectories. *Stochastics* **79** (3-4), 211-218.
- [10] PESKIR, G. (2005) A change-of-variable formula with local time on curves. *Journal of Theoretical Probability* **18**(3), 499–535.
- [11] SHEPP, L. A. (1969) Explicit solutions to some problems of optimal stopping. *The Annals of Mathematical Statistics* **40**, 993-1010.
- [12] SOFRONOV, G., KEITH, J. M. AND KROESE, D. P. (2006). An optimal sequential procedure for a buying-selling problem with independent observations. *J. Appl. Probab.* **43**(2), 454-462.
- [13] SONG, Q. S., YIN, G. AND ZHANG Q. (2009) Stochastic optimization methods for buying-low-and-selling-high strategies. *Stochastic Analysis and Applications.* **27**(3), 523-542.
- [14] TAMAKI, M. (2001). Optimal stopping on trajectories and the ballot problem. *J. Appl. Probab.* **38** (4), 946-959.

(E. J. Baurdoux) DEPARTMENT OF STATISTICS, LONDON SCHOOL OF ECONOMICS, HOUGHTON STREET, LONDON, WC2A 2AE, UK.

*E-mail address:* e.j.baurdoux@lse.ac.uk

(N. Chen) DEPARTMENT OF SYSTEMS ENGINEERING AND ENGINEERING MANAGEMENT, THE CHINESE UNIVERSITY OF HONG KONG, SHATIN, N.T., HONG KONG

*E-mail address:* nchen@se.cuhk.edu.hk

(B. A. Surya) SCHOOL OF BUSINESS AND MANAGEMENT, BANDUNG INSTITUTE OF TECHNOLOGY, 10 GANESHA STREET, 40132 BANDUNG, WEST JAVA, INDONESIA.

*E-mail address:* budhi.surya@sbm-itb.ac.id

(K. Yamazaki) DEPARTMENT OF MATHEMATICS, FACULTY OF ENGINEERING SCIENCE, KANSAI UNIVERSITY, 3-3-35 YAMATE-CHO, SUITA-SHI, OSAKA 564-8680, JAPAN.

*E-mail address:* kyamazak@kansai-u.ac.jp