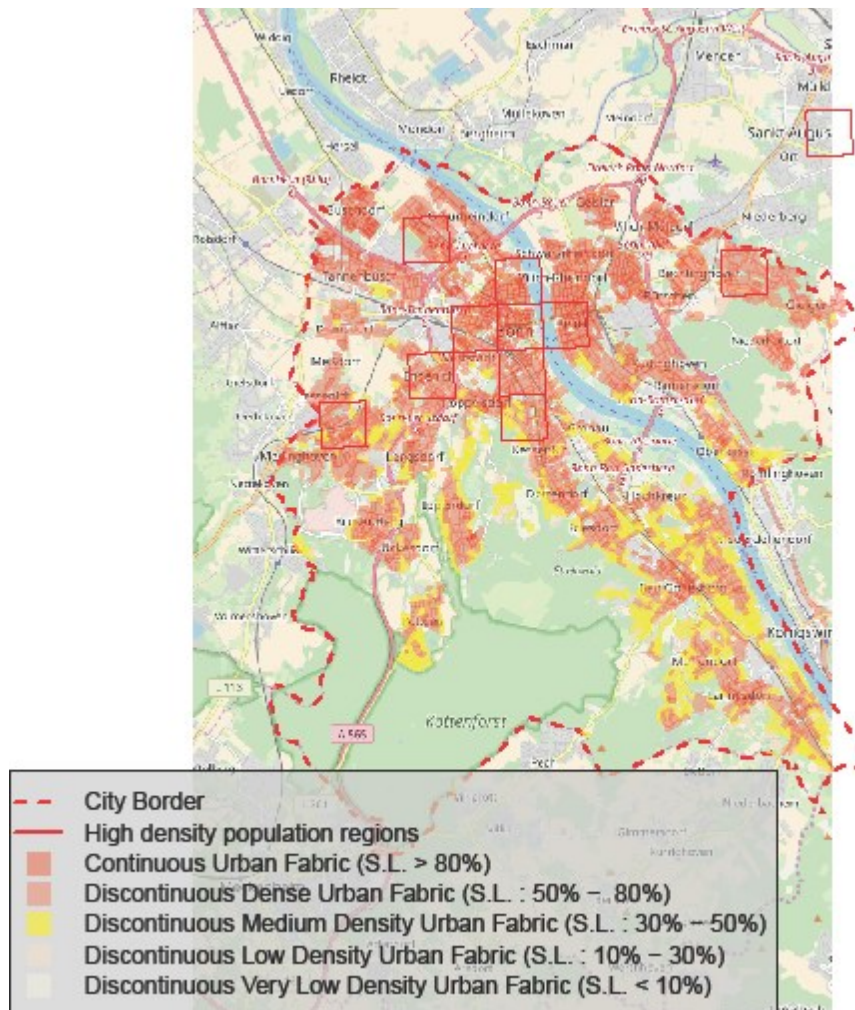


Web Appendix for “Urban Land Use Fragmentation and Human Wellbeing”

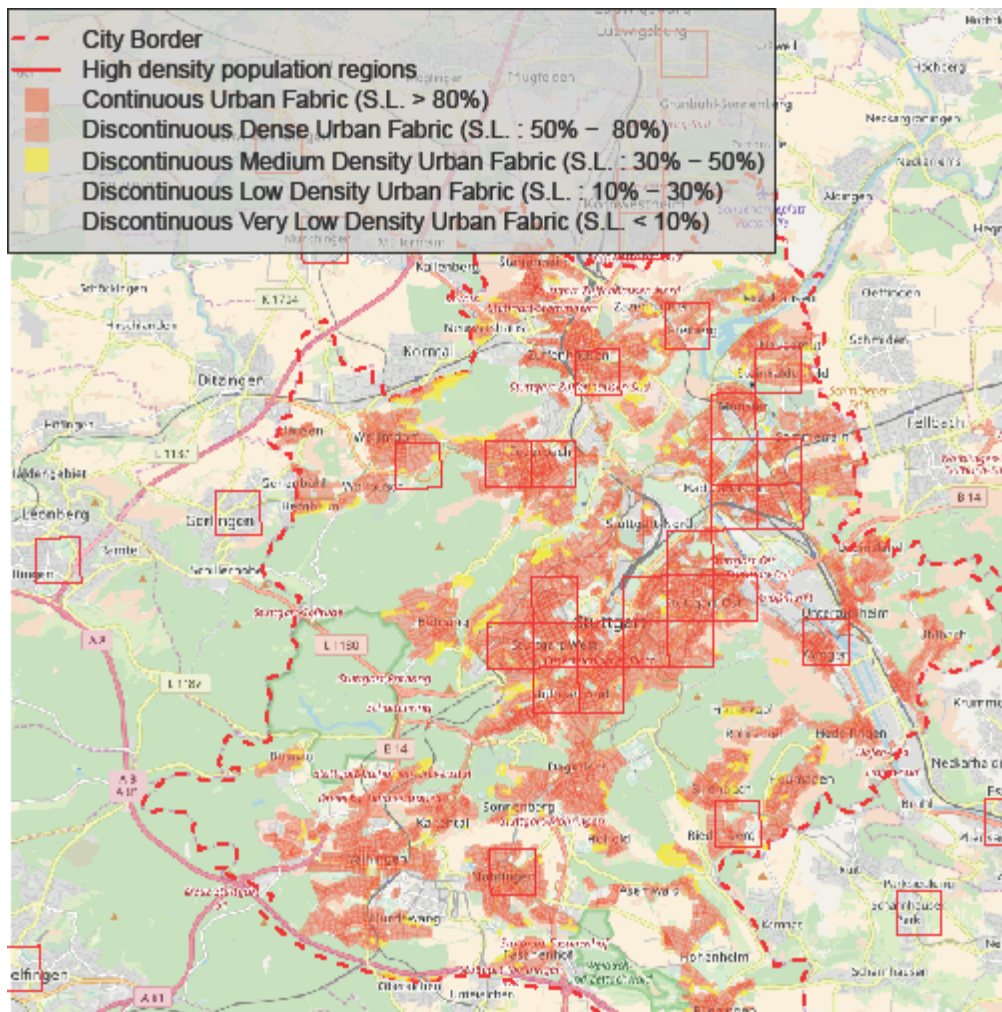
Figures

Figure W1a: Distribution of Different Types of Urban Fabric in Bonn, Germany



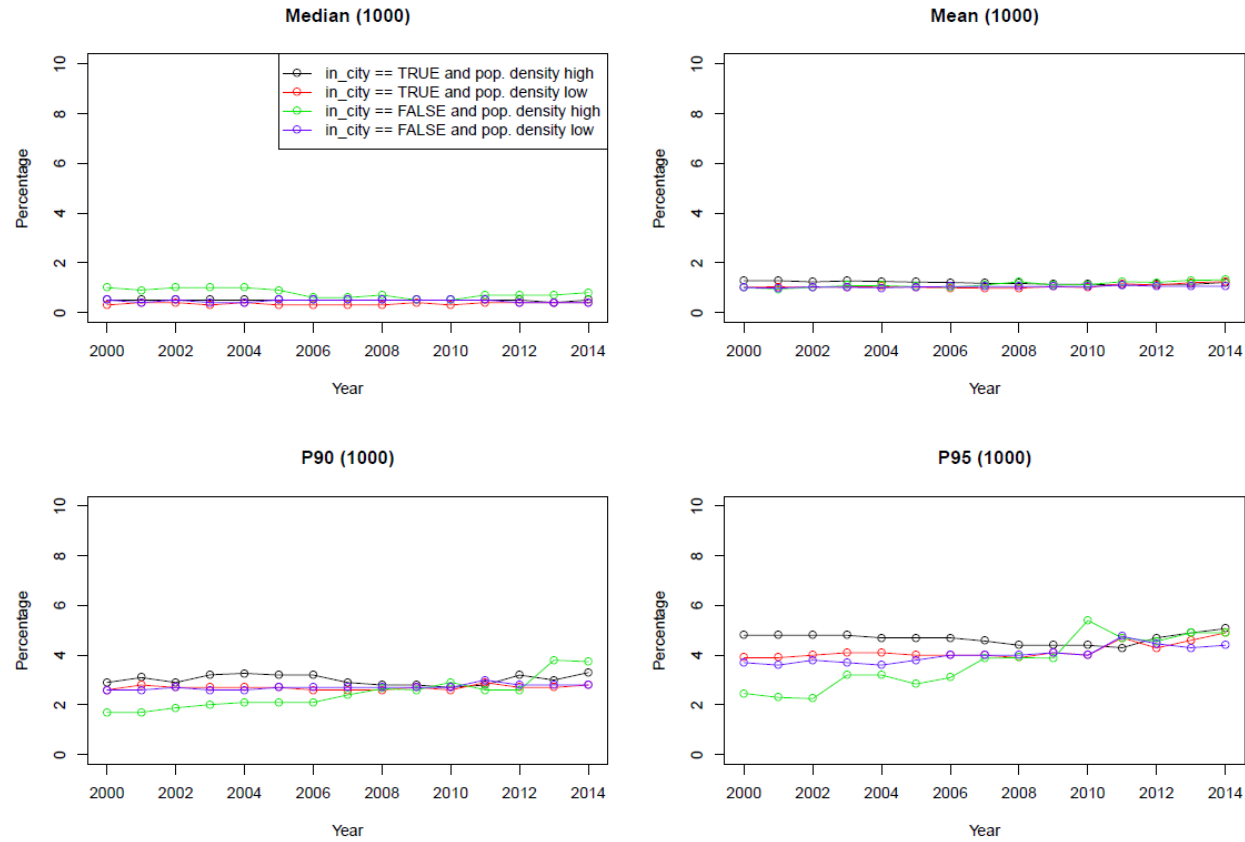
Source: European Urban Atlas, Bonn, 2006, own calculations

Figure W1b: Distribution of Different Types of Urban Fabric in Stuttgart, Germany



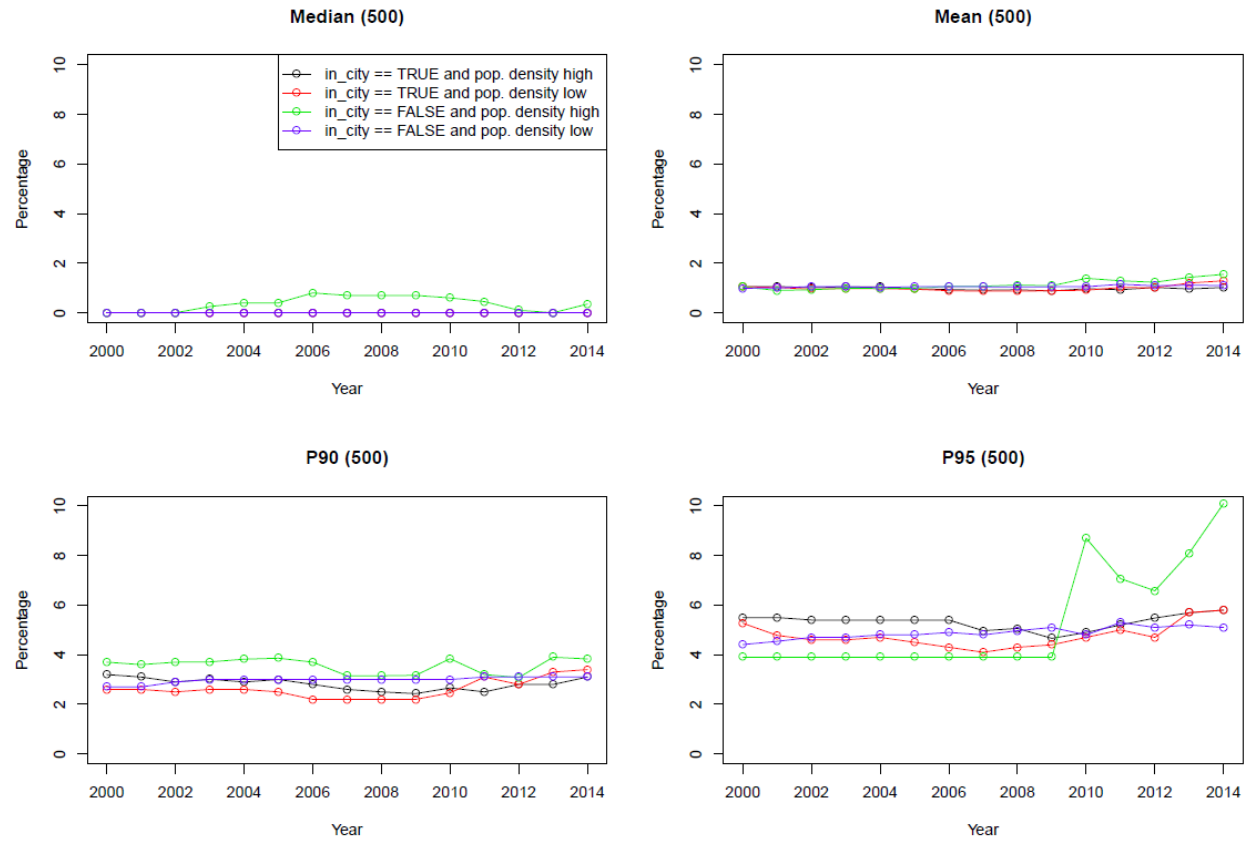
Source: European Urban Atlas, Stuttgart, 2006, own calculations

Figure W2a: Change in Land Use by Household (Treatment Radius of 1000 Metres)



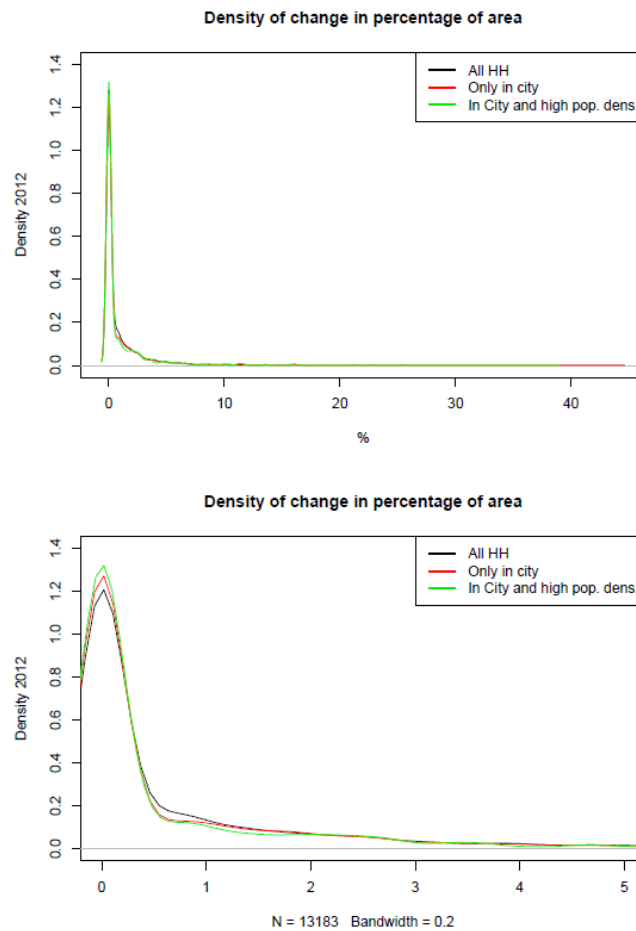
Note: The figure plots percentage changes (mean, median, and selected percentiles) in land use between 2006 and 2012 within a 1,000 metres radius around households over the observation period, by population density (that is, whether a household is located in an area which has, respectively, a population density greater or lower than the mean Census population density of the city). For example, for 2002, the figure shows the percentage changes in land use between 2006 and 2012 within a 1,000 metres radius around all households in 2002.

Figure W2b: Change in Land Use by Household (Treatment Radius of 500 Metres)



Note: The figure replicates Figure W2a using a 500 instead of a 1,000 metres radius.

Figure W2c: Density of Change by Household (Treatment Radius of 1000 Metres)



Note: The figure shows for all households in 2012 density plots for percentage changes in land use between 2006 and 2012 within a 1,000 (lower sub-figure) and 500 metres radius (higher sub-figure), respectively for all households (including households in the hinterlands), households within cities' administrative boundaries (excluding households in the hinterlands, i.e. our baseline specification), and households within cities' administrative boundaries and within areas that have a population density greater than the mean Census population density of the city.

Tables

Table W1a: Descriptive Statistics – Outcome and Controls

	Mean	Minimum	Maximum	Observations
<i>Outcome</i>				
Life Satisfaction	7.0776 (1.8071)	0	10	34,256
<i>Controls</i>				
Age	48.0497 (17.0803)	18	98	34,256
Is Female	0.5370 (0.4986)	0	1	34,256
Is Married	0.6174 (0.4860)	0	1	34,256
Is in Partnership	0.0009 (0.0296)	0	1	34,256
Is Divorced	0.0859 (0.2802)	0	1	34,256
Is Widowed	0.0535 (0.2250)	0	1	34,256
Has Very Good Health	0.1079 (0.3103)	0	1	34,256
Has Good Health	0.4028 (0.4905)	0	1	34,256
Has Bad Health	0.1329 (0.3395)	0	1	34,256
Has Very Bad Health	0.0368 (0.1882)	0	1	34,256

Is Disabled	0.1142 (0.3180)	0	1	34,256
Has Migration Background	0.2244 (0.4172)	0	1	34,256
Is in School	0.0220 (0.1466)	0	1	34,256
Has Lower Than Secondary Degree	0.1339 (0.3406)	0	1	34,256
Has Tertiary Degree	0.3316 (0.4708)	0	1	34,256
Is in Training	0.0168 (0.1284)	0	1	34,256
Is Part-Time Employment	0.1180 (0.3226)	0	1	34,256
Is Irregularly Employed	0.0504 (0.2187)	0	1	34,256
Is on Parental Leave	0.0233 (0.1509)	0	1	34,256
Is Unemployed	0.0546 (0.2272)	0	1	34,256
Is Out of Labour Force	0.4236 (0.4941)	0	1	34,256
Log Annual Net Household Income	7.8213 (0.5960)	5.0370	12.2061	34,256
Number of Children in Household	1.6613 (0.4733)	0	2	34,256
Number of Rooms in Household	1.6461 (0.8584)	0	9	34,256
Lives in Small Apartment Building	0.2098 (0.4072)	0	1	34,256
Lives in Medium-Sized Apartment Building	0.1304	0	1	34,256

	(0.3367)			
Lives in Large Apartment Building	0.2986	0	1	34,256
	(0.4577)			
Lives in High Rise	0.1713	0	1	34,256
	(0.3767)			
Log Annual House Price	8.9085	4.9698	11.6952	34,256
	(0.5668)			
Unemployment Rate in City	10.8067	3.7000	23.4000	34,256
	(3.3648)			
Average Household Income in City	7.3209	6.9613	7.6764	34,256
	(0.1516)			

Standard errors in parentheses.

Notes: All numbers are rounded to four decimal places. See Section 2 for variable definitions and descriptive statistics.

Sources: SOEP, 2000-2014, individuals aged 17 or above; own calculations.

Table W1b: Descriptive Statistics – Landscape Fragmentation Metrics

	POL	PDe	Ede	LPI	MPS	SEI
<i>Overall</i>						
Landscape	-	35.949	0.042	6.724	-	0.813
<i>Urban Land Use Type</i>						
Agricultural, semi-natural areas, and wetlands	0.123	1.240	19.521	4.295	99.2023	-
Construction sites	0.006	0.171	1.182	0.283	32.4686	-
Continuous urban fabric (soil sealing > 80%)	0.085	8.255	37.585	0.114	10.3477	-
Discontinuous dense urban fabric (soil sealing 50% - 80%)	0.168	10.051	64.305	0.298	16.6966	-
Discontinuous medium density urban fabric (soil sealing 30% - 50%)	0.039	1.732	13.593	0.285	22.2813	-
Discontinuous low density urban fabric (soil sealing 10% - 30%)	0.003	0.150	0.764	0.135	17.9761	-
Discontinuous very low density urban fabric (soil sealing < 10%)	0.000	0.021	0.147	0.048	22.2346	-
Fast transit roads and associated land	0.014	0.171	5.666	0.527	82.8171	-
Forests	0.048	0.321	7.138	1.633	149.3359	-
Green urban areas	0.024	0.877	7.093	0.555	27.5208	-
Industrial, commercial, public, military, and private units	0.206	8.126	52.925	1.867	25.3746	-
Isolated structures	0.001	0.214	0.748	0.038	6.6362	-
Land without current use	0.013	0.770	5.423	0.106	16.7655	-
Mineral extraction and dump sites	0.015	0.150	1.593	1.120	99.4738	-
Other roads and associated land	0.071	0.192	152.847	6.724	367.4445	-
Port areas	0.013	0.192	2.607	0.426	65.8105	-
Railways and associated land	0.017	0.385	10.629	0.578	43.9841	-
Sports and leisure facilities	0.096	2.759	25.947	0.658	34.7161	-
Water bodies	0.059	0.171	8.100	2.181	342.9757	-

Notes: Numbers represent mean values calculated over all buffers with treatment radii of 1,000m. MPS has been rescaled (divided by 1,000). All numbers are rounded to three decimal places. See Section 2 for variable definitions and descriptive statistics as well as Table 1 for underlying formulas.

Sources: EUA, 2006, 35 major German cities with inhabitants equal to or greater than 100,000; own calculations.

Table W1c: Means, Standard Deviations, Numbers of Observations (Overall Fragmentation, Treatment Radius of 1000 Metres)

	<i>Average</i>		Life Satisfaction <i>Inside City</i> <i>Greater Census</i>		<i>Smaller Census</i>	
	<i>All</i>	<i>Movers</i>	<i>All</i>	<i>Movers</i>	<i>All</i>	<i>Movers</i>
Patch Density (PDe)						
<i>Mean</i>	47.8497	48.9786	54.8480	55.8604	43.0831	43.5737
<i>Standard Deviation</i>	14.0977	14.4682	13.9901	13.7858	12.0304	12.5752
<i>N</i>	57 588	3 353	23 332	1 475	34 256	1 878
Edge Density (EDe)						
<i>Mean</i>	0.0494	0.0499	0.0536	0.0539	0.0465	0.0467
<i>Standard Deviation</i>	0.0089	0.0091	0.0078	0.0076	0.0084	0.0088
<i>N</i>	57 588	3 353	23 332	1 475	34 256	1 878
Largest Patch Index (LPI)						
<i>Mean</i>	11.8392	11.7738	11.3136	11.2568	12.1972	12.1799
<i>Standard Deviation</i>	5.4270	5.4746	3.6778	3.6775	6.3232	6.5214
<i>N</i>	57 588	3 353	23 332	1 475	34 256	1 878
Shannon's Evenness Index (SEI)						
<i>Mean</i>	0.7584	0.7619	0.7627	0.7636	0.7555	0.7605
<i>Standard Deviation</i>	0.0752	0.0769	0.0683	0.0673	0.0794	0.0837
<i>N</i>	57 588	3 353	23 332	1 475	34 256	1 878

Notes: Summary statistics are restricted to the estimation sample. The treatment radius is 1000 metres. The census is the mean number of residents per square kilometre (which is about 5,908), as defined by the Federal Statistical Office's 2011 Microcensus. All figures are rounded to four decimal places. See Section 2 for variable definitions and descriptive statistics.

Sources: SOEP, 2000-2014, individuals aged 17 or above; EUA, 2006, 35 major German cities with inhabitants equal to or greater than 100,000; own calculations.

Table W1d: Descriptive Statistics – Fabric Fragmentation, Treatment Radius of 1000 Metres: Means, Standard Deviations, Numbers of Observations

	<i>Average</i>		Life Satisfaction <i>Inside City</i> Greater Census		<i>Smaller Census</i>	
	<i>All</i>	<i>Movers</i>	<i>All</i>	<i>Movers</i>	<i>All</i>	<i>Movers</i>
Panel A: Continuous Urban Fabric						
Percentage of Landscape (POL_k)						
<i>Mean</i>	0.1567	0.1737	0.2452	0.2628	0.0953	0.1018
<i>Standard Deviation</i>	0.1406	0.1477	0.1548	0.1552	0.0875	0.0917
<i>N</i>	56 177	3 283	23 008	1 467	33 169	1 816
Patch Density (PDe_k)						
<i>Mean</i>	14.0660	15.4391	21.3818	22.5255	8.9913	9.7145
<i>Standard Deviation</i>	12.5997	13.1248	14.0591	14.0741	8.3000	8.8385
<i>N</i>	56 177	3 283	23 008	1 467	33 169	1 816
Edge Density (EDe_k)						
<i>Mean</i>	66.2846	72.9096	101.1454	107.4175	42.1031	45.0334
<i>Standard Deviation</i>	57.2600	59.6672	62.5234	62.2402	37.5993	39.6079
<i>N</i>	56 177	3 283	23 008	1 467	33 169	1 816
Largest Patch Index (LPI_k)						
<i>Mean</i>	1.2507	1.2777	1.4172	1.4416	1.1352	1.1453
<i>Standard Deviation</i>	0.6869	0.6696	0.6696	0.6369	0.6750	0.6662
<i>N</i>	56 177	3 283	23 008	1 467	33 169	1 816
Mean Patch Size (MPS_k)						
<i>Mean</i>	11.1500	11.2508	11.8358	12.1419	10.6744	10.5310
<i>Standard Deviation</i>	4.2760	4.1565	3.7425	3.8623	4.5497	4.2464

<i>N</i>	56 177	3 283	23 008	1 467	33 169	1 816
<i>Panel B: Discontinuous Dense Urban Fabric</i>						
Percentage of Landscape (POL_k)						
Mean	0.2209	0.2035	0.2036	0.1853	0.2325	0.2176
Standard Deviation	0.1204	0.1172	0.1266	0.1137	0.1146	0.1180
<i>N</i>	57 119	3 328	23 004	1 454	34 115	1 874
Patch Density (PDe_k)						
Mean	12.6530	11.9437	12.1414	11.4270	12.9979	12.3446
Standard Deviation	6.4808	6.3032	6.9668	6.5041	6.1074	6.1145
<i>N</i>	57 119	3 328	23 004	1 454	34 115	1 874
Edge Density (EDe_k)						
Mean	81.3763	75.6329	74.4233	68.8841	86.0647	80.8692
Standard Deviation	40.7693	40.3023	42.7355	39.9157	38.6896	39.8297
<i>N</i>	57 119	3 328	23 004	1 454	34 115	1 874
Largest Patch Index (LPI_k)						
Mean	2.2244	2.0563	2.0556	1.8176	2.3383	2.2414
Standard Deviation	1.1982	1.0429	1.2682	0.9634	1.1345	1.0646
<i>N</i>	57 119	3 328	23 004	1 454	34 115	1 874
Mean Patch Size (MPS_k)						
Mean	17.5769	16.9788	16.5988	15.9493	18.2364	17.7775
Standard Deviation	6.0087	5.7061	6.0781	5.1359	5.8702	5.9927
<i>N</i>	57 119	3 328	23 004	1 454	34 115	1 874
<i>Panel C: Discontinuous Medium-Density Urban Fabric</i>						
Percentage of Landscape (POL_k)						
Mean	0.0541	0.0515	0.0453	0.0385	0.0592	0.0604
Standard Deviation	0.0718	0.0680	0.0631	0.0520	0.0759	0.0757
<i>N</i>	45 092	2 584	16 554	1 044	28 538	1 540

Patch Density (PDe_k)

Mean	2.8492	2.7811	2.3784	2.1733	3.1223	3.1930
Standard Deviation	3.1260	3.0477	2.6937	2.3691	3.3209	3.3713
N	45 092	2 584	16 554	1 044	28 538	1 540

Edge Density (EDe_k)

Mean	19.2656	18.5223	15.6148	13.6963	21.3833	21.7940
Standard Deviation	22.8984	22.0778	19.3516	16.6375	24.4757	24.5759
N	45 092	2 584	16 554	1 044	28 538	1 540

Largest Patch Index (LPI_k)

Mean	1.3427	1.2623	1.2430	1.0884	1.4006	1.3802
Standard Deviation	1.1600	1.0858	1.2056	1.0533	1.1287	1.0919
N	45 092	2 584	16 554	1 044	28 538	1 540

Mean Patch Size (MPS_k)

Mean	16.3360	15.8405	16.0101	14.9790	16.5251	16.4245
Standard Deviation	10.7420	10.0174	12.2777	10.6517	9.7361	9.5229
N	45 092	2 584	16 554	1 044	28 538	1 540

Panel D: Discontinuous Low-Density Urban Fabric**Percentage of Landscape (POL_k)**

Mean	0.0117	0.0113	0.0082	0.0072	0.0132	0.0132
Standard Deviation	0.0185	0.0185	0.0146	0.0115	0.0197	0.0207
N	21 654	1 231	6 321	389	15 333	842

Patch Density (PDe_k)

Mean	0.8971	0.8645	0.6927	0.6407	0.9814	0.9679
Standard Deviation	0.9147	0.8871	0.6195	0.5551	0.9995	0.9874
N	21 654	1 231	6 321	389	15 333	842

Edge Density (ED_{ek})

Mean	4.6522	4.5010	3.1966	2.9395	5.2522	5.2224
Standard Deviation	5.9790	5.9617	4.0621	3.4650	6.5154	6.6928
N	21 654	1 231	6 321	389	15 333	842

Largest Patch Index (LPI_k)

Mean	0.5923	0.5819	0.4676	0.4546	0.6437	0.6407
Standard Deviation	0.6345	0.6152	0.6479	0.4844	0.6217	0.6590
N	21 654	1 231	6 321	389	15 333	842

Mean Patch Size (MPS_k)

Mean	11.1902	10.9700	9.4078	9.7930	11.9249	11.5138
Standard Deviation	10.0242	9.3065	9.5415	8.4961	10.1259	9.6142
N	21 654	1 231	6 321	389	15 333	842

Panel E: Discontinuous Very-Low-Density Urban Fabric**Percentage of Landscape (POL_k)**

Mean	0.0028	0.0028	0.0022	0.0030	0.0029	0.0027
Standard Deviation	0.0025	0.0022	0.0018	0.0022	0.0026	0.0023
N	3 372	174	564	40	2 808	134

Patch Density (PDe_k)

Mean	0.4050	0.4073	0.3569	0.3964	0.4147	0.4105
Standard Deviation	0.1981	0.1763	0.1108	0.1552	0.2100	0.1826
N	3 372	174	564	40	2 808	134

Edge Density (ED_{ek})

Mean	1.4309	1.4977	1.2583	1.6937	1.4655	1.4392
Standard Deviation	0.9502	1.0178	0.8382	1.2629	0.9675	0.9299
N	3 372	174	564	40	2 808	134

Largest Patch Index (LPI_k)

Mean	0.2398	0.2398	0.2075	0.2693	0.2463	0.2310
Standard Deviation	0.2144	0.1761	0.1572	0.1739	0.2236	0.1764
N	3 372	174	564	40	2 808	134

Mean Patch Size (MPS_k)

Mean	6.9380	6.6663	6.2438	7.6633	7.0774	6.3687
Standard Deviation	6.3246	4.8270	4.7632	5.2397	6.5857	4.6764
N	3 372	174	564	40	2 808	134

Notes: Summary statistics are restricted to the estimation sample. MPS has been rescaled (divided by 1,000). The treatment radius is 1000 metres. The census is the mean number of residents per square kilometre (which is about 5,908), as defined by the Federal Statistical Office's 2011 Microcensus. All figures are rounded to four decimal places. See Section 2 for variable definitions and descriptive statistics.

Sources: SOEP, 2000-2014, individuals aged 17 or above; EUA, 2006, 35 major German cities with inhabitants equal to or greater than 100,000; own calculations.

Table W2a: Overall Fragmentation, Treatment Radius of 500 Metres

	Life Satisfaction					
	Average	OLS + City Fixed Effects		Average	Individual + City Fixed Effects	
		Greater Census	Smaller Census		Greater Census	Smaller Census
Patch Density (PDe)	-1.0755 (1.3675)	0.1094 (2.8024)	-2.3486 (1.6299)	0.0002 (0.0011)	0.0001 (0.0021)	-0.0034 (0.0022)
<i>(Within) R Squared</i>	0.2691	0.2614	0.2795	0.0859	0.0886	0.0855
Edge Density (EDe)	0.0039** (0.0019)	0.0058 (0.0040)	0.0035 (0.0022)	1.1153 (2.2845)	1.3049 (4.3677)	-4.6142 (3.9989)
<i>(Within) R Squared</i>	0.2692	0.2616	0.2796	0.0859	0.0886	0.0854
Largest Patch Index (LPI)	-0.0004 (0.0007)	0.0005 (0.0013)	-0.0018* (0.0009)	0.0020 (0.0032)	-0.0019 (0.0080)	0.0037 (0.0046)
<i>(Within) R Squared</i>	0.2691	0.2614	0.2796	0.0859	0.0886	0.0853
Shannon's Evenness Index (SEI)	-0.0058 (0.1478)	0.0142 (0.2489)	0.0286 (0.1799)	-0.0932 (0.2148)	-0.2219 (0.3474)	0.1032 (0.4111)
<i>(Within) R Squared</i>	0.2690	0.2614	0.2794	0.0859	0.0886	0.0853
Constant	Yes	Yes	Yes	Yes	Yes	Yes
Controls	Yes	Yes	Yes	Yes	Yes	Yes
Individual Fixed Effects	No	No	No	Yes	Yes	Yes
City Fixed Effects	Yes	Yes	Yes	Yes	Yes	Yes
Year Fixed Effects	Yes	Yes	Yes	Yes	Yes	Yes

Observations	57 588	23 332	34256	57 588	23 332	34 256
Individuals	14 744	6 267	9 392	14 744	6 267	9 392

Robust standard errors clustered at household level in parentheses

**** $p < 0.01$, ** $p < 0.05$, * $p < 0.1$*

Notes: Each estimate comes from a separate regression of Equation 1. The outcome is *life satisfaction* on a 0/10 scale. The treatment radius is 500 metres. The census is the mean number of residents per square kilometre (which is about 5,908), as defined by the Federal Statistical Office's 2011 Microcensus. All regressions include city and year fixed effects and a constant. All figures are rounded to four decimal places. See Section 2 for variable definitions and descriptive statistics.

Sources: SOEP, 2000-2014, individuals aged 17 or above; EUA, 2006, 35 major German cities with inhabitants equal to or greater than 100,000; own calculations.

Table W2b: Fabric Fragmentation, Treatment Radius of 500 Metres

	Life Satisfaction					
	Average	OLS + City Fixed Effects		Average	Individual + City Fixed Effects	
		Greater Census	Smaller Census		Greater Census	Smaller Census
Panel A: Continuous Urban Fabric						
Percentage of Landscape (POL_k)	0.04896 (0.08248)	-0.0137 (0.1271)	0.0663 (0.1313)	-0.0414 (0.1159)	-0.1335 (0.2215)	-0.3060 (0.3262)
<i>(Within) R Squared</i>	0.2691	0.2614	0.2794	0.0859	0.0886	0.0853
Patch Density (PDe_k)	0.0007 (0.0007)	0.0009 (0.0012)	0.0000 (0.0012)	0.0003 (0.0011)	0.0001 (0.0023)	-0.0032 (0.0030)
<i>(Within) R Squared</i>	0.2691	0.2614	0.2794	0.0859	0.0886	0.0854
Edge Density (EDe_k)	0.0001 (0.0001)	0.0000 (0.0003)	0.0000 (0.0002)	0.0000 (0.0002)	-0.0003 (0.0005)	-0.0007 (0.0007)
<i>(Within) R Squared</i>	0.2691	0.2614	0.2794	0.0859	0.0886	0.0853
Largest Patch Index (LPI_k)	0.0023 (0.0062)	-0.0074 (0.0097)	0.0065 (0.0082)	-0.0088 (0.0101)	-0.0344** (0.0164)	-0.0005 (0.0193)
<i>(Within) R Squared</i>	0.2691	0.2614	0.2794	0.0859	0.0889	0.0853
Mean Patch Size (MPS_k)	0.0035* (0.0021)	-0.0011 (0.0048)	0.0046** (0.0023)	0.0000 (0.0031)	-0.0104 (0.0067)	0.0036 (0.0048)
<i>(Within) R Squared</i>	0.2692	0.2614	0.2796	0.0859	0.0887	0.0853
Panel B: Discontinuous Dense Urban Fabric						

Percentage of Landscape (POL_k)	-0.0469 (0.0780)	-0.1999 (0.1378)	0.0661 (0.0962)	0.1844 (0.1206)	0.1839 (0.2594)	0.1607 (0.2290)
<i>(Within) R Squared</i>	0.2691	0.2617	0.2794	0.0860	0.0886	0.0853
Patch Density (PDe_k)	-0.0012 (0.0011)	-0.0023 (0.0020)	-0.0006 (0.0014)	0.0027 (0.0018)	0.0010 (0.0037)	0.0005 (0.0034)
<i>(Within) R Squared</i>	0.2691	0.2615	0.2794	0.0860	0.0886	0.0853
Edge Density (EDe_k)	-0.0001 (0.0002)	-0.0005 (0.0003)	0.0001 (0.0002)	0.0005 (0.0003)	0.0002 (0.0007)	0.0004 (0.0006)
<i>(Within) R Squared</i>	0.2691	0.2616	0.2794	0.0860	0.0886	0.0853
Largest Patch Index (LPI_k)	-0.0020 (0.0039)	-0.0084 (0.0073)	0.0044 (0.0044)	0.0003 (0.0062)	0.0157 (0.0119)	0.0058 (0.0110)
<i>(Within) R Squared</i>	0.2691	0.2616	0.2794	0.0859	0.0887	0.0853
Mean Patch Size (MPS_k)	0.0022 (0.0017)	0.0017 (0.0027)	0.0040* (0.0022)	0.0013 (0.0028)	0.0092** (0.0040)	0.0006 (0.0059)
<i>(Within) R Squared</i>	0.2691	0.2614	0.2796	0.0859	0.0889	0.0853
Panel C: Discontinuous Medium-Density Urban Fabric						
Percentage of Landscape (POL_k)	0.2270 (0.1713)	0.6974*** (0.2667)	0.0863 (0.2294)	-0.3660 (0.2431)	0.7329 (0.6037)	-0.6265* (0.3774)
<i>(Within) R Squared</i>	0.2691	0.2621	0.2794	0.0860	0.0887	0.0854
Patch Density (PDe_k)	0.0023	0.0152***	-0.0010	-0.0066	0.0212**	-0.0163*

	(0.0033)	(0.0050)	(0.0045)	(0.0049)	(0.0099)	(0.0084)
<i>(Within) R Squared</i>	0.2691	0.2622	0.2794	0.0859	0.0889	0.0855
Edge Density (ED_{ek})	0.0005 (0.0005)	0.0026*** (0.0008)	0.0000 (0.0006)	-0.0011 (0.0007)	0.0030* (0.0017)	-0.0021* (0.0012)
<i>(Within) R Squared</i>	0.2691	0.2624	0.2794	0.0860	0.0888	0.0854
Largest Patch Index (LPI_k)	0.0017 (0.0045)	0.0074 (0.0078)	-0.0012 (0.0058)	-0.0082 (0.0074)	0.0084 (0.0169)	-0.0069 (0.0109)
<i>(Within) R Squared</i>	0.2691	0.2615	0.2794	0.0859	0.0886	0.0853
Mean Patch Size (MPS_k)	-0.0006 (0.0011)	-0.0005 (0.0016)	-0.0008 (0.0016)	-0.0025 (0.0019)	0.0030 (0.0041)	-0.0025 (0.0035)
<i>(Within) R Squared</i>	0.2691	0.2614	0.2794	0.0860	0.0886	0.0853
Panel D: Discontinuous Low-Density Urban Fabric						
Percentage of Landscape (POL_k)	-0.0316 (0.7630)	0.2447 (2.3811)	0.0992 (0.8332)	-0.1858 (0.9746)	-1.8759 (4.8715)	1.1678 (1.1860)
<i>(Within) R Squared</i>	0.2690	0.2614	0.2794	0.0859	0.0886	0.0853
Patch Density (PD_{ek})	-0.0057 (0.0119)	0.0199 (0.0319)	-0.0067 (0.0130)	-0.0086 (0.0171)	0.0635 (0.0593)	0.0079 (0.0236)
<i>(Within) R Squared</i>	0.2691	0.2614	0.2794	0.0859	0.0886	0.0853
Edge Density (ED_{ek})	-0.0002 (0.0022)	0.0049 (0.0064)	-0.0003 (0.0024)	-0.0007 (0.0029)	0.0047 (0.0125)	0.0025 (0.0038)

<i>(Within) R Squared</i>	0.2691	0.2614	0.2794	0.0859	0.0886	0.0853
Largest Patch Index (LPI_k)	-0.0018 (0.0140)	0.0131 (0.0324)	-0.0007 (0.0157)	-0.0060 (0.0247)	-0.0296 (0.0647)	0.0198 (0.0280)
<i>(Within) R Squared</i>	0.2691	0.2614	0.2794	0.0859	0.0886	0.0853
Mean Patch Size (MPS_k)	-0.0015 (0.0024)	0.0010 (0.0046)	-0.0016 (0.0028)	-0.0011 (0.0044)	-0.0049 (0.0089)	0.0030 (0.0052)
<i>(Within) R Squared</i>	0.2691	0.2614	0.2794	0.0859	0.0886	0.0853
Panel E: Discontinuous Very-Low-Density Urban Fabric						
Percentage of Landscape (POL_k)	-12.4294 (10.1303)	32.3829 (26.8842)	-16.1373 (10.7343)	-1.0353 (20.6399)	-2.3750 (44.8360)	-4.2133 (22.7091)
<i>(Within) R Squared</i>	0.2692	0.2614	0.2797	0.0859	0.0886	0.0853
Patch Density (PDe_k)	-0.1240 (0.0771)	0.1317 (0.2803)	-0.1477* (0.0811)	0.0100 (0.0907)	-0.3808* (0.1959)	0.0138 (0.1020)
<i>(Within) R Squared</i>	0.2693	0.2614	0.2798	0.0859	0.0887	0.0853
Edge Density (EDe_k)	-0.0339 (0.0237)	0.0243 (0.0735)	-0.0408 (0.0251)	0.0138 (0.0349)	-0.0607 (0.0964)	0.0120 (0.0396)
<i>(Within) R Squared</i>	0.2692	0.2614	0.2798	0.0859	0.0886	0.0853
Largest Patch Index (LPI_k)	-0.1069 (0.1018)	0.3238 (0.2688)	-0.1462 (0.10867)	0.0250 (0.2424)	-0.0237 (0.4483)	-0.0212 (0.2850)

<i>(Within) R Squared</i>	0.2691	0.2614	0.2796	0.0859	0.0886	0.0853
Mean Patch Size (MPS_k)	-0.0145 (0.0133)	0.0419 (0.0347)	-0.0200 (0.0143)	0.0015 (0.0323)	-0.0030 (0.0580)	-0.0055 (0.0384)
<i>(Within) R Squared</i>	0.2691	0.2614	0.2796	0.0859	0.0886	0.0853
Constant	Yes	Yes	Yes	Yes	Yes	Yes
Controls	Yes	Yes	Yes	Yes	Yes	Yes
Individual Fixed Effects	No	No	No	Yes	Yes	Yes
City Fixed Effects	Yes	Yes	Yes	Yes	Yes	Yes
Year Fixed Effects	Yes	Yes	Yes	Yes	Yes	Yes
Observations	57 588	23 332	34 256	57 588	23 332	34 256
Individuals	14 744	6 267	9 392	14 744	6 267	9 392

Robust standard errors clustered at household level in parentheses

*** $p < 0.01$, ** $p < 0.05$, * $p < 0.1$

Notes: Each estimate comes from a separate regression of Equation 1. The outcome is *life satisfaction* on a 0/10 scale. MPS has been rescaled (divided by 1,000). The treatment radius is 500 metres. The census is the mean number of residents per square kilometre (which is about 5,908), as defined by the Federal Statistical Office's 2011 Microcensus. All regressions include city and year fixed effects and a constant. All figures are rounded to four decimal places. See Section 2 for variable definitions and descriptive statistics.

Sources: SOEP, 2000-2014, individuals aged 17 or above; EUA, 2006, 35 major German cities with inhabitants equal to or greater than 100,000; own calculations.

Table W3: Overall Fragmentation, Treatment Radius of 1000 Metres – Shannon’s Evenness Index with Complete Controls

	Life Satisfaction					
	OLS + City Fixed Effects			Individual + City Fixed Effects		
	Average	Greater Census	Smaller Census	Average	Greater Census	Smaller Census
Shannon’s Evenness Index (SEI)	-0.0066 (0.1876)	0.3423 (0.3670)	-0.1399 (0.2140)	0.1430 (0.2582)	-0.0033 (0.4811)	-0.0560 (0.4586)
<i>(Within) R Squared</i>	0.2690	0.2615	0.2794	0.0859	0.0886	0.0853
Age	-0.0436*** (0.0050)	-0.0482*** (0.0082)	-0.0384*** (0.0063)	-0.0226** (0.0109)	-0.0281 (0.0176)	-0.0241 (0.0150)
Age Squared	0.0005*** (0.0001)	0.0005*** (0.0001)	0.0005*** (0.0001)	-0.0001 (0.0001)	-0.0001 (0.0001)	-0.0001 (0.0001)
Is Female	0.1094*** (0.0198)	0.1227*** (0.0314)	0.1007*** (0.0247)			
Is Married	0.1590*** (0.0390)	0.1808*** (0.0592)	0.1421*** (0.0503)	-0.0783 (0.0537)	-0.1539* (0.0875)	-0.0559 (0.0704)
Is in Partnership	-0.0127 (0.3091)	0.0107 (0.3354)	-0.1033 (0.3736)	-0.0004 (0.1955)	-0.0816 (0.2661)	0.2148 (0.3548)
Is Divorced	-0.0416 (0.0505)	-0.0338 (0.0788)	-0.0413 (0.0641)	0.0259 (0.0776)	-0.0422 (0.1264)	0.0320 (0.1042)
Is Widowed	0.0760 (0.0697)	0.2073* (0.1158)	0.0067 (0.0846)	-0.2397* (0.1311)	-0.1409 (0.2555)	-0.2934* (0.1537)
Has Very Good Health	1.2412*** (0.0298)	1.2417*** (0.0458)	1.2304*** (0.0386)	0.5977*** (0.0281)	0.5973*** (0.0428)	0.5921*** (0.0381)
Has Good Health	0.6959*** (0.0202)	0.6720*** (0.0334)	0.7081*** (0.0246)	0.3806*** (0.0174)	0.3657*** (0.0277)	0.3799*** (0.0225)
Has Bad Health	-0.7888*** (0.0304)	-0.7940*** (0.0478)	-0.7824*** (0.0384)	-0.5041*** (0.0250)	-0.5395*** (0.0385)	-0.4833*** (0.0333)
Has Very Bad Health	-2.1126***	-2.0667***	-2.1421***	-1.4990***	-1.4695***	-1.4930***

	(0.0761)	(0.1139)	(0.0986)	(0.0677)	(0.1086)	(0.0869)
Is Disabled	-0.0161	-0.0662	0.0193	-0.0471	0.0294	-0.1085*
	(0.0394)	(0.0663)	(0.0479)	(0.0433)	(0.0708)	(0.0563)
Has Migration Background	0.0022	-0.0062	0.0103			
	(0.0306)	(0.0472)	(0.0385)			
Is in School	-0.1362**	-0.1964*	-0.0853	0.0348	-0.1966	0.1339
	(0.0620)	(0.1124)	(0.0723)	(0.0726)	(0.1452)	(0.0890)
Has Lower Than Secondary Degree	-0.1261***	-0.1194*	-0.1402***	-0.1010	-0.1014	-0.0532
	(0.0379)	(0.0628)	(0.0457)	(0.1031)	(0.1940)	(0.1277)
Has Tertiary Degree	0.0268	0.0423	0.0142	-0.1869***	-0.2143**	-0.1580*
	(0.0272)	(0.0441)	(0.0341)	(0.0596)	(0.0835)	(0.0903)
Is in Training	0.0595	0.0252	0.0889	0.1060	0.1096	0.1117
	(0.0644)	(0.1047)	(0.0798)	(0.0750)	(0.1388)	(0.0902)
Is Part-Time Employed	0.0201	0.0511	-0.0058	-0.0334	0.0138	-0.0664
	(0.0308)	(0.0490)	(0.0388)	(0.0319)	(0.0487)	(0.0453)
Is Irregularly Employed	-0.0927**	-0.0707	-0.1177**	-0.1212***	-0.0637	-0.1638***
	(0.0444)	(0.0676)	(0.0584)	(0.0413)	(0.0625)	(0.0583)
Is on Parental Leave	0.1257**	0.2002***	0.0708	0.0462	-0.0250	0.1044
	(0.0489)	(0.0763)	(0.0630)	(0.0538)	(0.0855)	(0.0700)
Is Unemployed	-0.5841***	-0.5872***	-0.5677***	-0.3136***	-0.3705***	-0.2346***
	(0.0510)	(0.0789)	(0.0657)	(0.0457)	(0.0671)	(0.0643)
Is Out of Labour Force	0.0303	0.0025	0.0431	-0.0607*	0.0184	-0.1219**
	(0.0317)	(0.0534)	(0.0380)	(0.0346)	(0.0511)	(0.0491)
Net Household Income	0.4210***	0.3675***	0.4571***	0.2577***	0.2700***	0.2863***
	(0.0284)	(0.0473)	(0.0349)	(0.0285)	(0.0483)	(0.0392)
Number of Children in Household	-0.0758**	-0.0337	-0.1068***	-0.0262	0.0279	-0.0797*
	(0.0311)	(0.0530)	(0.0368)	(0.0334)	(0.0569)	(0.0447)
Number of Rooms Per Individual	0.0623***	0.0211	0.0798***	-0.0019	-0.0723**	0.0302
	(0.0182)	(0.0331)	(0.0215)	(0.0199)	(0.0335)	(0.0264)
Lives in Small Apartment Building	-0.0020	0.0867	-0.0150	0.1628**	0.6113***	0.0844
	(0.0452)	(0.1144)	(0.0490)	(0.0722)	(0.1822)	(0.0995)

Lives in Medium-Sized Apartment Building	0.0500 (0.0490)	0.1577 (0.0999)	0.0251 (0.0556)	0.1419** (0.0675)	0.3731** (0.1668)	-0.0018 (0.0963)
Lives in Large Apartment Building	-0.0290 (0.0414)	-0.0054 (0.0786)	-0.0095 (0.0495)	0.0625 (0.0569)	0.2436* (0.1328)	-0.0485 (0.0858)
Lives in High Rise	0.0198 (0.0424)	0.0591 (0.0750)	0.0096 (0.0562)	0.0580 (0.0594)	0.2422** (0.1223)	0.0197 (0.1067)
Annual Net Rent of Dwelling	0.0439 (0.0325)	0.0302 (0.0546)	0.0474 (0.0403)	-0.0259 (0.0336)	0.0170 (0.0635)	-0.0153 (0.0431)
Unemployment Rate in City	-0.0314*** (0.0093)	-0.0497*** (0.0146)	-0.0181 (0.0123)	-0.0222** (0.0097)	-0.0470*** (0.0154)	-0.0157 (0.0134)
Average Net Household Income in City	-0.0507 (0.4240)	0.9881 (0.6769)	-0.6200 (0.5452)	0.6145 (0.3999)	0.8720 (0.6783)	0.5060 (0.5099)
Population Level in City	0.0000*** (0.0000)	0.0000*** (0.0000)	0.0000*** (0.0000)	-0.0000** (0.0000)	-0.0000** (0.0000)	-0.0000 (0.0000)
Individual Fixed Effects	No	No	No	Yes	Yes	Yes
City Fixed Effects	Yes	Yes	Yes	Yes	Yes	Yes
Year Fixed Effects	Yes	Yes	Yes	Yes	Yes	Yes
Observations	57 588	23 332	34 256	57 588	23 332	34 256
Individuals	14 744	6 267	9 392	14 744	6 267	9 392

Robust standard errors clustered at household level in parentheses

*** $p < 0.01$, ** $p < 0.05$, * $p < 0.1$

Notes: The outcome is *life satisfaction* on a 0/10 scale. The treatment radius is 1,000 metres. The census is the mean number of residents per square kilometre (which is about 5,908), as defined by the Federal Statistical Office's 2011 Microcensus. All regressions include city and year fixed effects and a constant. All figures are rounded to four decimal places. See Section 2 for variable definitions and descriptive statistics.

Sources: SOEP, 2000-2014, individuals aged 17 or above; EUA, 2006, 35 major German cities with inhabitants equal to or greater than 100,000; own calculations.

Table W4: Overall Fragmentation, Treatment Radius of 500 Metres – Shannon’s Evenness Index with Complete Controls

	Life Satisfaction					
	OLS + City Fixed Effects			Individual + City Fixed Effects		
	Average	Greater Census	Smaller Census	Average	Greater Census	Smaller Census
Shannon’s Evenness Index (SEI)	-0.0059 (0.1479)	0.0142 (0.2490)	0.0287 (0.1800)	-0.0932 (0.2148)	-0.2220 (0.3475)	0.1033 (0.4111)
<i>(Within) R Squared</i>	0.2690	0.2614	0.2794	0.0859	0.0886	0.0853
Age	-0.0436*** (0.0050)	-0.0483*** (0.0082)	-0.0384*** (0.0063)	-0.0225** (0.0109)	-0.0278 (0.0176)	-0.0242 (0.0150)
Age Squared	0.0005*** (0.0001)	0.0005*** (0.0001)	0.0005*** (0.0001)	-0.0001 (0.0001)	-0.0001 (0.0001)	-0.0001 (0.0001)
Is Female	0.1094*** (0.0198)	0.1225*** (0.0314)	0.1006*** (0.0247)			
Is Married	0.1590*** (0.0390)	0.1820*** (0.0592)	0.1428*** (0.0503)	-0.0781 (0.0536)	-0.1529* (0.0874)	-0.0555 (0.0705)
Is in Partnership	-0.0127 (0.3092)	0.0132 (0.3349)	-0.1067 (0.3745)	0.0066 (0.1940)	-0.0765 (0.2671)	0.2103 (0.3546)
Is Divorced	-0.0416 (0.0505)	-0.0322 (0.0789)	-0.0408 (0.0641)	0.0259 (0.0776)	-0.0423 (0.1265)	0.0329 (0.1044)
Is Widowed	0.0760 (0.0697)	0.2103* (0.1159)	0.0073 (0.0846)	-0.2392* (0.1311)	-0.1383 (0.2555)	-0.2928* (0.1537)
Has Very Good Health	1.2412*** (0.0298)	1.2417*** (0.0458)	1.2305*** (0.0385)	0.5978*** (0.0281)	0.5974*** (0.0428)	0.5923*** (0.0381)
Has Good Health	0.6959*** (0.0201)	0.6713*** (0.0333)	0.7084*** (0.0246)	0.3806*** (0.0174)	0.3658*** (0.0277)	0.3799*** (0.0225)
Has Bad Health	-0.7889*** (0.0304)	-0.7935*** (0.0478)	-0.7826*** (0.0384)	-0.5040*** (0.0250)	-0.5394*** (0.0385)	-0.4833*** (0.0333)
Has Very Bad Health	-2.1126***	-2.0683***	-2.1432***	-1.4989***	-1.4694***	-1.4932***

	<i>(0.0760)</i>	<i>(0.1141)</i>	<i>(0.0985)</i>	<i>(0.0677)</i>	<i>(0.1087)</i>	<i>(0.0869)</i>
Is Disabled	-0.0161	-0.0638	0.0198	-0.0472	0.0293	-0.1085*
	<i>(0.0394)</i>	<i>(0.0664)</i>	<i>(0.0478)</i>	<i>(0.0433)</i>	<i>(0.0708)</i>	<i>(0.0563)</i>
Has Migration Background	0.0022	-0.0063	0.0093			
	<i>(0.0306)</i>	<i>(0.0473)</i>	<i>(0.0385)</i>			
Is in School	-0.1362**	-0.1970*	-0.0861	0.0353	-0.1948	0.1338
	<i>(0.0620)</i>	<i>(0.1126)</i>	<i>(0.0723)</i>	<i>(0.0726)</i>	<i>(0.1453)</i>	<i>(0.0889)</i>
Has Lower Than Secondary Degree	-0.1261***	-0.1182*	-0.1406***	-0.1017	-0.1021	-0.0528
	<i>(0.0378)</i>	<i>(0.0628)</i>	<i>(0.0456)</i>	<i>(0.1032)</i>	<i>(0.1941)</i>	<i>(0.1278)</i>
Has Tertiary Degree	0.0268	0.0412	0.0136	-0.1878***	-0.2157**	-0.1573*
	<i>(0.0272)</i>	<i>(0.0442)</i>	<i>(0.0342)</i>	<i>(0.0596)</i>	<i>(0.0834)</i>	<i>(0.0902)</i>
Is in Training	0.0595	0.0270	0.0886	0.1066	0.1095	0.1111
	<i>(0.0644)</i>	<i>(0.1047)</i>	<i>(0.0797)</i>	<i>(0.0751)</i>	<i>(0.1386)</i>	<i>(0.0903)</i>
Is Part-Time Employed	0.0201	0.0509	-0.0059	-0.0332	0.0145	-0.0665
	<i>(0.0308)</i>	<i>(0.0491)</i>	<i>(0.0388)</i>	<i>(0.0319)</i>	<i>(0.0487)</i>	<i>(0.0453)</i>
Is Irregularly Employed	-0.0926**	-0.0727	-0.1174**	-0.1214***	-0.0634	-0.1636***
	<i>(0.0444)</i>	<i>(0.0676)</i>	<i>(0.0584)</i>	<i>(0.0413)</i>	<i>(0.0626)</i>	<i>(0.0583)</i>
Is on Parental Leave	0.1257**	0.2007***	0.0712	0.0463	-0.0250	0.1041
	<i>(0.0489)</i>	<i>(0.0763)</i>	<i>(0.0631)</i>	<i>(0.0538)</i>	<i>(0.0854)</i>	<i>(0.0699)</i>
Is Unemployed	-0.5841***	-0.5857***	-0.5684***	-0.3137***	-0.3711***	-0.2348***
	<i>(0.0511)</i>	<i>(0.0791)</i>	<i>(0.0656)</i>	<i>(0.0458)</i>	<i>(0.0670)</i>	<i>(0.0643)</i>
Is Out of Labour Force	0.0303	0.0032	0.0433	-0.0604*	0.0190	-0.1217**
	<i>(0.0317)</i>	<i>(0.0534)</i>	<i>(0.0380)</i>	<i>(0.0346)</i>	<i>(0.0511)</i>	<i>(0.0491)</i>
Net Household Income	0.4210***	0.3679***	0.4570***	0.2580***	0.2697***	0.2863***
	<i>(0.0284)</i>	<i>(0.0472)</i>	<i>(0.0349)</i>	<i>(0.0285)</i>	<i>(0.0483)</i>	<i>(0.0391)</i>
Number of Children in Household	-0.0758**	-0.0338	-0.1065***	-0.0265	0.0281	-0.0797*
	<i>(0.0311)</i>	<i>(0.0530)</i>	<i>(0.0368)</i>	<i>(0.0334)</i>	<i>(0.0569)</i>	<i>(0.0447)</i>
Number of Rooms Per Individual	0.0623***	0.0205	0.0798***	-0.0020	-0.0736**	0.0302
	<i>(0.0182)</i>	<i>(0.0330)</i>	<i>(0.0215)</i>	<i>(0.0199)</i>	<i>(0.0339)</i>	<i>(0.0264)</i>
Lives in Small Apartment Building	-0.0020	0.0829	-0.0177	0.1633**	0.5939***	0.0840
	<i>(0.0452)</i>	<i>(0.1152)</i>	<i>(0.0489)</i>	<i>(0.0721)</i>	<i>(0.1843)</i>	<i>(0.0990)</i>

Lives in Medium-Sized Apartment Building	0.0498 (0.0489)	0.1581 (0.0995)	0.0219 (0.0556)	0.1431** (0.0675)	0.3710** (0.1670)	-0.0014 (0.0959)
Lives in Large Apartment Building	-0.0291 (0.0413)	-0.0060 (0.0784)	-0.0142 (0.0497)	0.0661 (0.0570)	0.2412* (0.1334)	-0.0518 (0.0857)
Lives in High Rise	0.0197 (0.0421)	0.0583 (0.0753)	0.0040 (0.0559)	0.0623 (0.0592)	0.2380* (0.1232)	0.0161 (0.1060)
Annual Net Rent of Dwelling	0.0439 (0.0325)	0.0286 (0.0544)	0.0494 (0.0401)	-0.0262 (0.0336)	0.0177 (0.0636)	-0.0151 (0.0431)
Unemployment Rate in City	-0.0314*** (0.0093)	-0.0501*** (0.0146)	-0.0178 (0.0123)	-0.0222** (0.0097)	-0.0468*** (0.0153)	-0.0157 (0.0133)
Average Net Household Income in City	-0.0506 (0.4244)	0.9503 (0.6796)	-0.6029 (0.5450)	0.6120 (0.3999)	0.8694 (0.6782)	0.5088 (0.5097)
Population Level in City	0.0000*** (0.0000)	0.0000*** (0.0000)	0.0000*** (0.0000)	-0.0000* (0.0000)	-0.0000** (0.0000)	-0.0000 (0.0000)
Individual Fixed Effects	No	No	No	Yes	Yes	Yes
City Fixed Effects	Yes	Yes	Yes	Yes	Yes	Yes
Year Fixed Effects	Yes	Yes	Yes	Yes	Yes	Yes
Observations	57 588	23 332	34 256	57 588	23 332	34 256
Individuals	14 744	6 267	9 392	14 744	6 267	9 392

Robust standard errors clustered at household level in parentheses

*** $p < 0.01$, ** $p < 0.05$, * $p < 0.1$

Notes: The outcome is *life satisfaction* on a 0/10 scale. The treatment radius is 500 metres. The census is the mean number of residents per square kilometre (which is about 5,908), as defined by the Federal Statistical Office's 2011 Microcensus. All regressions include city and year fixed effects and a constant. All figures are rounded to four decimal places. See Section 2 for variable definitions and descriptive statistics.

Sources: SOEP, 2000-2014, individuals aged 17 or above; EUA, 2006, 35 major German cities with inhabitants equal to or greater than 100,000; own calculations.

Table W5a: Overall Fragmentation, Treatment Radius of 1,000 Metres (Year 2006 Only)

	Life Satisfaction		
	Average	OLS + City Fixed Effects	
		Greater Census	Smaller Census
Patch Density (PDe)	0.0043** (0.0020)	0.0050 (0.0035)	0.0020 (0.0030)
<i>(Within) R Squared</i>	0.3343	0.3072	0.3796
Edge Density (EDe)	5.6551* (3.2253)	6.2315 (6.4704)	3.4225 (4.3363)
<i>(Within) R Squared</i>	0.3340	0.3066	0.3796
Largest Patch Index (LPI)	-0.0038 (0.0049)	0.0002 (0.0116)	-0.0055 (0.0054)
<i>(Within) R Squared</i>	0.3335	0.3061	0.3797
Shannon's Evenness Index (SEI)	-0.5829 (0.3769)	0.1132 (0.6592)	-0.5806 (0.4568)
<i>(Within) R Squared</i>	0.3339	0.3061	0.3799
Constant	Yes	Yes	Yes
Controls	Yes	Yes	Yes
Individual Fixed Effects	No	No	No
City Fixed Effects	Yes	Yes	Yes
Year Fixed Effects	Yes	Yes	Yes

Observations	4 244	1 730	2 514
Individuals	4 244	1 730	2 514

Robust standard errors clustered at household level in parentheses

*** $p < 0.01$, ** $p < 0.05$, * $p < 0.1$

Notes: Every coefficient estimate comes from a separate regression of Equation 1. The dependent variable is *life satisfaction* on a 0/10 scale. The treatment radius is 1,000 metres. The census is the mean number of residents per square kilometre (which is about 5,908 in our estimation sample), as defined by the Federal Statistical Office's 2011 Microcensus. All regressions include city and year fixed effects and a constant. All figures are rounded to four decimal places. See Section 2 for variable definitions and descriptive statistics.

Sources: SOEP, 2006, individuals aged 17 or above; EUA, 2006, 35 major German cities with inhabitants equal to or greater than 100,000; own calculations.

Table W5b: Fabric Fragmentation, Treatment Radius of 1,000 Metres (Year 2006 Only)

	Average	Life Satisfaction OLS + City Fixed Effects Greater Census	Smaller Census
Panel A: Continuous Urban Fabric			
Percentage of Landscape (POL_k)	0.4922** (0.2036)	0.4013 (0.3036)	0.5749 (0.4065)
<i>(Within) R Squared</i>	0.3345	0.3070	0.3800
Patch Density (PDe_k)	0.0059*** (0.0022)	0.0057* (0.0034)	0.0035 (0.0045)
<i>(Within) R Squared</i>	0.3347	0.3074	0.3796
Edge Density (EDe_k)	0.0012** (0.0004)	0.0011 (0.0007)	0.0009 (0.0009)
<i>(Within) R Squared</i>	0.3345	0.3072	0.3797
Largest Patch Index (LPI_k)	0.0450 (0.0428)	0.0162 (0.0680)	0.0771 (0.0560)
<i>(Within) R Squared</i>	0.3336	0.3061	0.3800
Mean Patch Size (MPS_k)	0.0036 (0.0063)	0.0085 (0.0123)	0.0002 (0.0062)
<i>(Within) R Squared</i>	0.3334	0.3063	0.3795
Panel B: Discontinuous Dense Urban Fabric			

Percentage of Landscape (POL_k)	-0.1551 (0.2144)	-0.4314 (0.3536)	0.1021 (0.3021)
<i>(Within) R Squared</i>	0.3335	0.3068	0.3795
Patch Density (PDe_k)	-0.0005 (0.0039)	-0.0009 (0.0068)	0.0011 (0.0056)
<i>(Within) R Squared</i>	0.3334	0.3061	0.3795
Edge Density (EDe_k)	-0.0002 (0.0006)	-0.0010 (0.0010)	0.0004 (0.0008)
<i>(Within) R Squared</i>	0.3334	0.3066	0.3795
Largest Patch Index (LPI_k)	-0.0587** (0.0234)	-0.1041*** (0.0376)	-0.0185 (0.0306)
<i>(Within) R Squared</i>	0.3348	0.3113	0.3795
Mean Patch Size (MPS_k)	-0.0079* (0.0045)	-0.0151** (0.0073)	0.0002 (0.0062)
<i>(Within) R Squared</i>	0.3340	0.3085	0.3794
Panel C: Discontinuous Medium-Density Urban Fabric			
Percentage of Landscape (POL_k)	0.0926 (0.4775)	1.8698** (0.7522)	-0.5595 (0.6087)
<i>(Within) R Squared</i>	0.3334	0.3086	0.3797
Patch Density (PDe_k)	0.0041	0.0380**	-0.0053

	(0.0102)	(0.0167)	(0.0130)
<i>(Within) R Squared</i>	0.3334	0.3082	0.3795
Edge Density (ED_{ek})	-0.0002 (0.00145)	0.0052** (0.0024)	-0.0018 (0.0017)
<i>(Within) R Squared</i>	0.3334	0.3080	0.3798
Largest Patch Index (LPI_k)	-0.0553** (0.0267)	0.0041 (0.0394)	-0.0879** (0.0360)
<i>(Within) R Squared</i>	0.3342	0.3061	0.3814
Mean Patch Size (MPS_k)	-0.0041 (0.0025)	-0.0022 (0.0032)	-0.0046 (0.0038)
<i>(Within) R Squared</i>	0.3339	0.3063	0.3799
Panel D: Discontinuous Low-Density Urban Fabric			
Percentage of Landscape (POL_k)	1.3877 (2.0470)	7.2605 (4.7222)	1.1289 (2.4316)
<i>(Within) R Squared</i>	0.3335	0.3072	0.3795
Patch Density (PDE_k)	-0.0083 (0.0405)	0.0987 (0.0917)	-0.0129 (0.0472)
<i>(Within) R Squared</i>	0.3334	0.3066	0.3795
Edge Density (ED_{ek})	0.0001 (0.0065)	0.0259 (0.0159)	-0.0012 (0.0076)

<i>(Within) R Squared</i>	0.3334	0.3073	0.3794
Largest Patch Index (LPI_k)	-0.0022 (0.0615)	0.1379 (0.1256)	-0.0301 (0.0762)
<i>(Within) R Squared</i>	0.3334	0.3070	0.3795
Mean Patch Size (MPS_k)	0.0012 (0.0041)	0.0077 (0.0083)	0.0014 (0.0050)
<i>(Within) R Squared</i>	0.3334	0.3067	0.3795
Panel E: Discontinuous Very-Low-Density Urban Fabric			
Percentage of Landscape (POL_k)	-79.6304** (38.7347)	-34.6110 (141.3404)	-79.2179** (40.1759)
<i>(Within) R Squared</i>	0.3347	0.3061	0.3813
Patch Density (PDe_k)	-0.5184 (0.3368)	-0.6100 (1.2602)	-0.5077 (0.3434)
<i>(Within) R Squared</i>	0.3342	0.3063	0.3805
Edge Density (EDe_k)	-0.1564* (0.0900)	-0.1330 (0.2816)	-0.1514 (0.0938)
<i>(Within) R Squared</i>	0.3345	0.3064	0.3808
Largest Patch Index (LPI_k)	-0.9574** (0.4184)	0.3849 (1.1472)	-1.0471** (0.4485)

<i>(Within) R Squared</i>	0.3348	0.3061	0.3816
Mean Patch Size (MPS_k)	-0.0323** (0.0141)	0.0192 (0.0320)	-0.0361** (0.0153)
<i>(Within) R Squared</i>	0.3347	0.3062	0.3816
Constant	Yes	Yes	Yes
Controls	Yes	Yes	Yes
Individual Fixed Effects	No	No	No
City Fixed Effects	Yes	Yes	Yes
Year Fixed Effects	Yes	Yes	Yes
Observations	4 244	1 730	2 514
Individuals	4 244	1 730	2 514

Robust standard errors clustered at household level in parentheses

*** $p < 0.01$, ** $p < 0.05$, * $p < 0.1$

Notes: Every coefficient estimate comes from a separate regression of Equation 1. The dependent variable is *life satisfaction* on a 0/10 scale. The treatment radius is 1,000 metres. The census is the mean number of residents per square kilometre (which is about 5,908 in our estimation sample), as defined by the Federal Statistical Office's 2011 Microcensus. All regressions include city and year fixed effects and a constant. All figures are rounded to four decimal places. See Section 2 for variable definitions and descriptive statistics.

Sources: SOEP, 2006, individuals aged 17 or above; EUA, 2006, 35 major German cities with inhabitants equal to or greater than 100,000; own calculations.

Table W6a: Overall Fragmentation, Treatment Radius of 1,000 Metres, Likelihood of Being Mover

	Likelihood of Being Mover		
	Average	OLS + City Fixed Effects Greater Census	Smaller Census
Patch Density (PDe)	0.0007* (0.0004)	0.0011 (0.0007)	0.0004 (0.0006)
<i>(Within) R Squared</i>	0.1529	0.1659	0.1596
Edge Density (EDe)	1.5183** (0.6784)	2.6380** (1.2704)	1.1647 (0.9036)
<i>(Within) R Squared</i>	0.1532	0.1664	0.1598
Largest Patch Index (LPI)	-0.0014 (0.0009)	-0.0008 (0.0022)	-0.0014 (0.0010)
<i>(Within) R Squared</i>	0.1528	0.1652	0.1598
Shannon's Evenness Index (SEI)	0.0335 (0.0747)	0.0470 (0.1304)	-0.0058 (0.0925)
<i>(Within) R Squared</i>	0.1526	0.1652	0.1595
Constant	Yes	Yes	Yes
Controls	Yes	Yes	Yes
Individual Fixed Effects	No	No	No
City Fixed Effects	Yes	Yes	Yes
Year Fixed Effects	No	No	No

Observations	58 488	23 646	34 842
Individuals	14 918	6 332	9 519

Robust standard errors clustered at household level in parentheses

*** $p < 0.01$, ** $p < 0.05$, * $p < 0.1$

Notes: Every coefficient estimate comes from a separate regression of Equation 1. The dependent variable is the *likelihood of being a mover*. The treatment radius is 1,000 metres. The census is the mean number of residents per square kilometre (which is about 5,908 in our estimation sample), as defined by the Federal Statistical Office's 2011 Microcensus. All regressions include city fixed effects and a constant. All figures are rounded to four decimal places. See Section 2 for variable definitions and descriptive statistics.

Sources: SOEP, 2000-2014, individuals aged 17 or above; EUA, 2006, 35 major German cities with inhabitants equal to or greater than 100,000; own calculations.

Table W6b: Fabric Fragmentation, Treatment Radius of 1,000 Metres, Likelihood of Being Mover

	Likelihood of Being Mover OLS + City Fixed Effects		
	Average	Greater Census	Smaller Census
Panel A: Continuous Urban Fabric			
Percentage of Landscape (POL_k)	0.0643 (0.0460)	0.0374 (0.0631)	0.1526 (0.0966)
<i>(Within) R Squared</i>	0.1529	0.1653	0.1601
Patch Density (PDe_k)	0.0006 (0.0005)	0.0006 (0.0007)	0.0011 (0.0010)
<i>(Within) R Squared</i>	0.1528	0.1654	0.1598
Edge Density (EDe_k)	0.0001 (0.0001)	0.0001 (0.0001)	0.0003 (0.0002)
<i>(Within) R Squared</i>	0.1529	0.1654	0.1600
Largest Patch Index (LPI_k)	0.0063 (0.0089)	0.0000 (0.0138)	0.0106 (0.0121)
<i>(Within) R Squared</i>	0.1526	0.1652	0.1596
Mean Patch Size (MPS_k)	-0.0000 (0.0013)	-0.0020 (0.0024)	0.0008 (0.0016)
<i>(Within) R Squared</i>	0.1526	0.1654	0.1595
Panel B: Discontinuous Dense Urban Fabric			

Percentage of Landscape (POL_k)	-0.0233 (0.0484)	-0.0445 (0.0750)	-0.0232 (0.0674)
<i>(Within) R Squared</i>	0.1526	0.1653	0.1595
Patch Density (PDe_k)	-0.0001 (0.0008)	0.0011 (0.0014)	-0.0019 (0.0012)
<i>(Within) R Squared</i>	0.1526	0.1654	0.1600
Edge Density (EDe_k)	0.0000 (0.0001)	0.0000 (0.0002)	-0.0001 (0.0001)
<i>(Within) R Squared</i>	0.1526	0.1652	0.1596
Largest Patch Index (LPI_k)	-0.0125*** (0.0045)	-0.0200*** (0.0064)	-0.0058 (0.0062)
<i>(Within) R Squared</i>	0.1535	0.1676	0.1597
Mean Patch Size (MPS_k)	-0.0014 (0.0009)	-0.0037*** (0.0014)	0.0010 (0.0013)
<i>(Within) R Squared</i>	0.1528	0.1670	0.1596
Panel C: Discontinuous Medium-Density Urban Fabric			
Percentage of Landscape (POL_k)	0.0339 (0.1010)	0.0365 (0.1740)	0.0441 (0.1319)
<i>(Within) R Squared</i>	0.1526	0.1652	0.1595
Patch Density (PDe_k)	0.0008	0.0014	0.0005

	(0.0023)	(0.0040)	(0.0029)
<i>(Within) R Squared</i>	0.1526	0.1652	0.1595
Edge Density (ED_{ik})	0.0000 (0.0003)	0.0001 (0.0005)	0.0000 (0.0004)
<i>(Within) R Squared</i>	0.1526	0.1652	0.1595
Largest Patch Index (LPI_{ik})	-0.0083 (0.0055)	-0.0027 (0.0079)	-0.0104 (0.0076)
<i>(Within) R Squared</i>	0.1529	0.1652	0.1599
Mean Patch Size (MPS_{ik})	-0.0008 (0.0005)	-0.0001 (0.0006)	-0.0012 (0.0007)
<i>(Within) R Squared</i>	0.1529	0.1652	0.1600
Panel D: Discontinuous Low-Density Urban Fabric			
Percentage of Landscape (POL_{ik})	-0.1984 (0.4336)	-0.5831 (0.9807)	-0.1492 (0.4800)
<i>(Within) R Squared</i>	0.1526	0.1653	0.1595
Patch Density (PDE_{ik})	-0.0092 (0.0089)	-0.0150 (0.0211)	-0.0091 (0.0097)
<i>(Within) R Squared</i>	0.1527	0.1653	0.1597
Edge Density (ED_{ik})	-0.0009 (0.0013)	-0.0015 (0.0034)	-0.0009 (0.0014)

<i>(Within) R Squared</i>	0.1526	0.1652	0.1596
---------------------------	--------	--------	--------

Largest Patch Index (LPI_k)	0.0001 (0.0121)	-0.0182 (0.0207)	0.0072 (0.0149)
--	--------------------	---------------------	--------------------

<i>(Within) R Squared</i>	0.1526	0.1654	0.1595
---------------------------	--------	--------	--------

Mean Patch Size (MPS_k)	-0.0001 (0.0008)	-0.0006 (0.0013)	0.0001 (0.0010)
--	---------------------	---------------------	--------------------

<i>(Within) R Squared</i>	0.1526	0.1652	0.1595
---------------------------	--------	--------	--------

Panel E: Discontinuous Very-Low-Density Urban Fabric

Percentage of Landscape (POL_k)	-0.3477 (6.7946)	30.3314 (20.8369)	-3.7883 (7.0962)
--	---------------------	----------------------	---------------------

<i>(Within) R Squared</i>	0.1526	0.1659	0.1596
---------------------------	--------	--------	--------

Patch Density (PDe_k)	-0.0209 (0.0543)	0.0151 (0.1744)	-0.0331 (0.0578)
--	---------------------	--------------------	---------------------

<i>(Within) R Squared</i>	0.1526	0.1652	0.1596
---------------------------	--------	--------	--------

Edge Density (EDe_k)	0.0004 (0.0142)	0.0478 (0.0386)	-0.0080 (0.0149)
---------------------------------------	--------------------	--------------------	---------------------

<i>(Within) R Squared</i>	0.1526	0.1657	0.1595
---------------------------	--------	--------	--------

Largest Patch Index (LPI_k)	0.0043 (0.0818)	0.3044 (0.2478)	-0.0340 (0.0867)
--	--------------------	--------------------	---------------------

<i>(Within) R Squared</i>	0.1526	0.1658	0.1595
Mean Patch Size (MPS_k)	0.0003 (0.0028)	0.0090 (0.0084)	-0.0008 (0.0030)
<i>(Within) R Squared</i>	0.1526	0.1656	0.1595
Constant	Yes	Yes	Yes
Controls	Yes	Yes	Yes
Individual Fixed Effects	No	No	No
City Fixed Effects	Yes	Yes	Yes
Year Fixed Effects	No	No	No
Observations	58 488	23 646	34 842
Individuals	14 918	6 332	9 519

Robust standard errors clustered at household level in parentheses

*** $p < 0.01$, ** $p < 0.05$, * $p < 0.1$

Notes: Every coefficient estimate comes from a separate regression of Equation 1. The dependent variable is the *likelihood of being a mover*. The treatment radius is 1,000 metres. The census is the mean number of residents per square kilometre (which is about 5,908 in our estimation sample), as defined by the Federal Statistical Office's 2011 Microcensus. All regressions include city fixed effects and a constant. All figures are rounded to four decimal places. See Section 2 for variable definitions and descriptive statistics.

Sources: SOEP, 2000-2014, individuals aged 17 or above; EUA, 2006, 35 major German cities with inhabitants equal to or greater than 100,000; own calculations.

Table W7a: Overall Fragmentation, Treatment Radius of 1,000 Metres (Stayers Only)

	Life Satisfaction		
	Average	Greater Census	Smaller Census
Patch Density (PDe)	0.0000 (0.0012)	0.0001 (0.0023)	-0.0008 (0.0017)
<i>(Within) R Squared</i>	0.2735	0.2578	0.2928
Edge Density (EDe)	-0.0287 (1.9577)	-0.6760 (4.2120)	-0.3734 (2.4674)
<i>(Within) R Squared</i>	0.2735	0.2578	0.2927
Largest Patch Index (LPI)	0.0009 (0.0027)	0.0063 (0.0078)	0.0009 (0.0028)
<i>(Within) R Squared</i>	0.2735	0.2580	0.2928
Shannon's Evenness Index (SEI)	-0.0295 (0.2443)	0.4740 (0.5172)	-0.3391 (0.2616)
<i>(Within) R Squared</i>	0.2735	0.2581	0.2929
Constant	Yes	Yes	Yes
Controls	Yes	Yes	Yes
Individual Fixed Effects	No	No	No
City Fixed Effects	Yes	Yes	Yes
Year Fixed Effects	Yes	Yes	Yes

Observations	36,603	14,049	22,554
Individuals	14 918	6 332	9 519

Robust standard errors clustered at household level in parentheses

*** $p < 0.01$, ** $p < 0.05$, * $p < 0.1$

Notes: Every coefficient estimate comes from a separate regression of Equation 1. The dependent variable is *life satisfaction* on a 0/10 scale. The treatment radius is 1,000 metres. The census is the mean number of residents per square kilometre (which is about 5,908 in our estimation sample), as defined by the Federal Statistical Office's 2011 Microcensus. All regressions include city and year fixed effects and a constant. All figures are rounded to four decimal places. See Section 2 for variable definitions and descriptive statistics.

Sources: SOEP, 2000-2014, individuals aged 17 or above; EUA, 2006, 35 major German cities with inhabitants equal to or greater than 100,000; own calculations.

Table W7b: Fabric Fragmentation, Treatment Radius of 1,000 Metres (Stayers Only)

	Average	Life Satisfaction OLS + City Fixed Effects Greater Census	Smaller Census
Panel A: Continuous Urban Fabric			
Percentage of Landscape (POL_k)	-0.0449 (0.1447)	0.0006 (0.2206)	-0.1907 (0.2553)
<i>(Within) R Squared</i>	0.2735	0.2578	0.2928
Patch Density (PDe_k)	0.0001 (0.0016)	0.0010 (0.0024)	-0.0014 (0.0026)
<i>(Within) R Squared</i>	0.2735	0.2579	0.2928
Edge Density (EDe_k)	-0.0000 (0.0003)	0.0000 (0.0005)	-0.0003 (0.0005)
<i>(Within) R Squared</i>	0.2735	0.2578	0.2928
Largest Patch Index (LPI_k)	-0.0024 (0.0263)	0.0179 (0.0419)	-0.0164 (0.0357)
<i>(Within) R Squared</i>	0.2735	0.2579	0.2928
Mean Patch Size (MPS_k)	-0.0032 (0.0040)	-0.0033 (0.0073)	-0.0040 (0.0048)
<i>(Within) R Squared</i>	0.2736	0.2579	0.2928
Panel B: Discontinuous Dense Urban Fabric			

Percentage of Landscape (POL_k)	-0.0367 (0.1486)	-0.2373 (0.2727)	0.0638 (0.1708)
<i>(Within) R Squared</i>	0.2735	0.2581	0.2928
Patch Density (PDe_k)	-0.0014 (0.0027)	-0.0047 (0.0049)	-0.0003 (0.0032)
<i>(Within) R Squared</i>	0.2736	0.2581	0.2927
Edge Density (EDe_k)	0.0000 (0.0004)	-0.0006 (0.0007)	0.0002 (0.0005)
<i>(Within) R Squared</i>	0.2735	0.2580	0.2928
Largest Patch Index (LPI_k)	0.0034 (0.0148)	-0.0145 (0.0269)	0.0125 (0.0150)
<i>(Within) R Squared</i>	0.2735	0.2579	0.2928
Mean Patch Size (MPS_k)	0.0037 (0.0030)	0.0037 (0.0052)	0.0046 (0.0035)
<i>(Within) R Squared</i>	0.2737	0.2580	0.2929
Panel C: Discontinuous Medium-Density Urban Fabric			
Percentage of Landscape (POL_k)	0.8983*** (0.3207)	1.5144*** (0.5049)	0.6922 (0.4370)
<i>(Within) R Squared</i>	0.2743	0.2594	0.2932
Patch Density (PDe_k)	0.0143*	0.0260**	0.0104

	(0.0073)	(0.0117)	(0.0099)
<i>(Within) R Squared</i>	0.2739	0.2587	0.2929
Edge Density (ED_k)	0.0024** (0.0010)	0.0046*** (0.0016)	0.0016 (0.0013)
<i>(Within) R Squared</i>	0.2741	0.2593	0.2930
Largest Patch Index (LPI_k)	0.0202 (0.0164)	0.0254 (0.0289)	0.0099 (0.0191)
<i>(Within) R Squared</i>	0.2737	0.2580	0.2928
Mean Patch Size (MPS_k)	0.0008 (0.0016)	0.0004 (0.0022)	0.0009 (0.0022)
<i>(Within) R Squared</i>	0.2736	0.2578	0.2928
Panel D: Discontinuous Low-Density Urban Fabric			
Percentage of Landscape (POL_k)	2.6826* (1.4154)	6.7397** (3.0472)	1.9450 (1.6874)
<i>(Within) R Squared</i>	0.2739	0.2587	0.2930
Patch Density (PDe_k)	0.0260 (0.0273)	0.0535 (0.0690)	0.0215 (0.0312)
<i>(Within) R Squared</i>	0.2736	0.2580	0.2928
Edge Density (ED_k)	0.0063 (0.0043)	0.0198* (0.0106)	0.0043 (0.0051)

<i>(Within) R Squared</i>	0.2737	0.2585	0.2929
Largest Patch Index (LPI_k)	0.0739** (0.0362)	0.1752** (0.0680)	0.0307 (0.0436)
<i>(Within) R Squared</i>	0.2739	0.2592	0.2928
Mean Patch Size (MPS_k)	0.0044** (0.0021)	0.0103** (0.0040)	0.0023 (0.0026)
<i>(Within) R Squared</i>	0.2738	0.2591	0.2928
Panel E: Discontinuous Very-Low-Density Urban Fabric			
Percentage of Landscape (POL_k)	5.7164 (20.6613)	127.2445*** (45.4575)	-2.2737 (22.7772)
<i>(Within) R Squared</i>	0.2735	0.2583	0.2927
Patch Density (PDe_k)	0.0232 (0.1887)	0.4204 (0.5370)	-0.0469 (0.2099)
<i>(Within) R Squared</i>	0.2735	0.2580	0.2928
Edge Density (EDe_k)	0.0113 (0.0531)	0.2120* (0.1203)	-0.0068 (0.0589)
<i>(Within) R Squared</i>	0.2735	0.2582	0.2927
Largest Patch Index (LPI_k)	0.0877 (0.2129)	1.3265*** (0.4541)	-0.0338 (0.2394)

<i>(Within) R Squared</i>	0.2735	0.2583	0.2927
Mean Patch Size (MPS_k)	0.0028 (0.0070)	0.0439*** (0.0146)	-0.0021 (0.0080)
<i>(Within) R Squared</i>	0.2735	0.2583	0.2927
Constant	Yes	Yes	Yes
Controls	Yes	Yes	Yes
Individual Fixed Effects	No	No	No
City Fixed Effects	Yes	Yes	Yes
Year Fixed Effects	Yes	Yes	Yes
Observations	36 603	14 049	22 554
Individuals	14 918	6 332	9 519

Robust standard errors clustered at household level in parentheses

*** $p < 0.01$, ** $p < 0.05$, * $p < 0.1$

Notes: Every coefficient estimate comes from a separate regression of Equation 1. The dependent variable is *life satisfaction* on a 0/10 scale. The treatment radius is 1,000 metres. The census is the mean number of residents per square kilometre (which is about 5,908 in our estimation sample), as defined by the Federal Statistical Office's 2011 Microcensus. All regressions include city and year fixed effects and a constant. All figures are rounded to four decimal places. See Section 2 for variable definitions and descriptive statistics.

Sources: SOEP, 2000-2014, individuals aged 17 or above; EUA, 2006, 35 major German cities with inhabitants equal to or greater than 100,000; own calculations.

Table W8a: Overall Fragmentation, Treatment Radius of 1,000 Metres (Movers Only)

	Life Satisfaction					
	OLS + City Fixed Effects			Individual Fixed Effects		
	Average	Greater Census	Smaller Census	Average	Greater Census	Smaller Census
Patch Density (PDe)	0.0018 (0.0013)	0.0021 (0.0024)	-0.0002 (0.0021)	0.0009 (0.0016)	-0.0013 (0.0036)	-0.0002 (0.0030)
<i>(Within) R Squared</i>	0.2730	0.2970	0.2668	0.0882	0.1039	0.0780
Edge Density (EDe)	2.2095 (2.2076)	3.4844 (4.4229)	-0.6529 (2.9187)	2.6577 (2.5891)	-1.6990 (6.1178)	.4112 (4.0464)
<i>(Within) R Squared</i>	0.2729	0.2969	0.2668	0.0882	0.1039	0.0780
Largest Patch Index (LPI)	-0.0002 (0.0034)	0.0070 (0.0071)	-0.0015 (0.0039)	-0.0030 (0.0035)	0.0042 (0.0088)	-0.0042 (0.0047)
<i>(Within) R Squared</i>	0.2728	0.2970	0.2668	0.0882	0.1039	0.0781
Shannon's Evenness Index (SEI)	0.0168 (0.2693)	0.0571 (0.4381)	0.1356 (0.3531)	0.1175 (0.2534)	-0.0515 (0.4713)	-0.0960 (0.4436)
<i>(Within) R Squared</i>	0.2728	0.2968	0.2668	0.0881	0.1038	0.0780
Constant	Yes	Yes	Yes	Yes	Yes	Yes
Controls	Yes	Yes	Yes	Yes	Yes	Yes
Individual Fixed Effects	No	No	No	Yes	Yes	Yes
City Fixed Effects	Yes	Yes	Yes	Yes	Yes	Yes

Year Fixed Effects	Yes	Yes	Yes	Yes	Yes	Yes
Observations	20 985	9 283	11 702	20 985	9 283	11 702
Individuals	3 856	2 119	2 652	3 856	2 119	2 652

Robust standard errors clustered at household level in parentheses

*** $p < 0.01$, ** $p < 0.05$, * $p < 0.1$

Notes: Every coefficient estimate comes from a separate regression of Equation 1. The dependent variable is *life satisfaction* on a 0/10 scale. The treatment radius is 1,000 metres. The census is the mean number of residents per square kilometre (which is about 5,908 in our estimation sample), as defined by the Federal Statistical Office's 2011 Microcensus. All regressions include city and year fixed effects and a constant. All figures are rounded to four decimal places. See Section 2 for variable definitions and descriptive statistics.

Sources: SOEP, 2000-2014, individuals aged 17 or above; EUA, 2006, 35 major German cities with inhabitants equal to or greater than 100,000; own calculations.

Table W8b: Fabric Fragmentation, Treatment Radius of 1,000 Metres (Movers Only)

	Life Satisfaction					
	OLS + City Fixed Effects			Individual + City Fixed Effects		
	Average	Greater Census	Smaller Census	Average	Greater Census	Smaller Census
Panel A: Continuous Urban Fabric						
Percentage of Landscape (POL_k)	0.2998** (0.1403)	0.1932 (0.1985)	0.2756 (0.2891)	0.0359 (0.1582)	-0.1959 (0.2827)	0.0621 (0.4864)
<i>(Within) R Squared</i>	0.2733	0.2970	0.2669	0.0881	0.1039	0.0780
Patch Density (PDe_k)	0.0036** (0.0015)	0.0030 (0.0023)	0.0028 (0.0029)	0.0014 (0.0018)	-0.0008 (0.0036)	0.0029 (0.0049)
<i>(Within) R Squared</i>	0.2734	0.2972	0.2669	0.0882	0.1038	0.0780
Edge Density (EDe_k)	0.0007** (0.0003)	0.0005 (0.0005)	0.0005 (0.0006)	0.0001 (0.0004)	-0.0004 (0.0007)	0.0003 (0.0011)
<i>(Within) R Squared</i>	0.2733	0.2971	0.2669	0.0881	0.1039	0.0780
Largest Patch Index (LPI_k)	0.0078 (0.0306)	-0.0130 (0.0469)	0.0244 (0.0401)	-0.0369 (0.0336)	-0.1202** (0.0592)	0.0038 (0.0611)
<i>(Within) R Squared</i>	0.2728	0.2968	0.2668	0.0882	0.1045	0.0780
Mean Patch Size (MPS_k)	0.0037 (0.0045)	0.0016 (0.0078)	0.0035 (0.0058)	-0.0035 (0.0052)	-0.0144 (0.0096)	0.0010 (0.0088)
<i>(Within) R Squared</i>	0.2729	0.2968	0.2668	0.0882	0.1042	0.0780

Panel B: Discontinuous Dense Urban Fabric

Percentage of Landscape (POL_k)	-0.2187 (0.1631)	-0.2619 (0.2819)	-0.1943 (0.2151)	0.2436 (0.1695)	0.0602 (0.3651)	0.2890 (0.3061)
--	---------------------	---------------------	---------------------	--------------------	--------------------	--------------------

<i>(Within) R Squared</i>	0.2730	0.2970	0.2669	0.0883	0.1038	0.0781
---------------------------	--------	--------	--------	--------	--------	--------

Patch Density (PDe_k)	-0.0033 (0.0030)	-0.0013 (0.0050)	-0.0051 (0.0041)	0.0036 (0.0031)	0.0011 (0.0063)	0.0009 (0.0056)
--	---------------------	---------------------	---------------------	--------------------	--------------------	--------------------

<i>(Within) R Squared</i>	0.2729	0.2968	0.2670	0.0882	0.1038	0.0780
---------------------------	--------	--------	--------	--------	--------	--------

Edge Density (EDe_k)	-0.0006 (0.0004)	-0.0007 (0.0008)	-0.0006 (0.0006)	0.0006 (0.0005)	-0.0001 (0.0010)	0.0008 (0.0008)
---------------------------------------	---------------------	---------------------	---------------------	--------------------	---------------------	--------------------

<i>(Within) R Squared</i>	0.2730	0.2970	0.2669	0.0883	0.1038	0.0781
---------------------------	--------	--------	--------	--------	--------	--------

Largest Patch Index (LPI_k)	-0.0152 (0.0178)	-0.0438 (0.0298)	0.0257 (0.0231)	0.0212 (0.0184)	0.0152 (0.0371)	0.0427 (0.0318)
--	---------------------	---------------------	--------------------	--------------------	--------------------	--------------------

<i>(Within) R Squared</i>	0.2729	0.2975	0.2670	0.0882	0.1039	0.0782
---------------------------	--------	--------	--------	--------	--------	--------

Mean Patch Size (MPS_k)	-0.0024 (0.0034)	-0.0062 (0.0053)	0.0020 (0.0048)	0.0024 (0.0038)	-0.0004 (0.0076)	0.0067 (0.0068)
--	---------------------	---------------------	--------------------	--------------------	---------------------	--------------------

<i>(Within) R Squared</i>	0.2729	0.2971	0.2668	0.0882	0.1038	0.0781
---------------------------	--------	--------	--------	--------	--------	--------

Panel C: Discontinuous Medium-Density Urban Fabric

Percentage of Landscape (POL_k)	-0.2671 (0.3662)	0.4626 (0.5413)	-0.3831 (0.4868)	-0.2414 (0.3618)	0.9046 (0.7014)	-0.6922 (0.6383)
--	---------------------	--------------------	---------------------	---------------------	--------------------	---------------------

<i>(Within) R Squared</i>	0.2729	0.2969	0.2669	0.0882	0.1041	0.0781
---------------------------	--------	--------	--------	--------	--------	--------

Patch Density (PDe_k)	-0.0064 (0.0083)	0.0078 (0.0123)	-0.0083 (0.0109)	-0.0080 (0.0080)	0.0241* (0.0143)	-0.0253* (0.0143)
<i>(Within) R Squared</i>	0.2729	0.2969	0.2669	0.0882	0.1042	0.0784
Edge Density (EDe_k)	-0.0009 (0.0011)	0.0015 (0.0017)	-0.0013 (0.0014)	-0.0009 (0.0011)	0.0034 (0.0022)	-0.0026 (0.0019)
<i>(Within) R Squared</i>	0.2729	0.2970	0.2670	0.0882	0.1042	0.0782
Largest Patch Index (LPI_k)	-0.0405** (0.0204)	-0.0273 (0.0299)	-0.0324 (0.0287)	0.0056 (0.0225)	0.0255 (0.0452)	0.0041 (0.0417)
<i>(Within) R Squared</i>	0.2733	0.2970	0.2671	0.0881	0.1039	0.0780
Mean Patch Size (MPS_k)	-0.0035* (0.0018)	-0.0036 (0.0027)	-0.0022 (0.0026)	0.0016 (0.0023)	-0.0016 (0.0040)	0.0028 (0.0043)
<i>(Within) R Squared</i>	0.2732	0.2972	0.2669	0.0882	0.1039	0.0781
Panel D: Discontinuous Low-Density Urban Fabric						
Percentage of Landscape (POL_k)	1.4904 (1.4993)	6.0097** (2.497)	0.9171 (1.7760)	1.4415 (1.6267)	2.7363 (3.5899)	3.2430 (2.1653)
<i>(Within) R Squared</i>	0.2729	0.2975	0.2668	0.0882	0.1039	0.0783
Patch Density (PDe_k)	-0.0166 (0.0334)	0.0520 (0.0553)	-0.0249 (0.0393)	0.0001 (0.0342)	0.1129 (0.0766)	0.0148 (0.0475)
<i>(Within) R Squared</i>	0.2728	0.2969	0.2668	0.0881	0.1041	0.0780
Edge Density (EDe_k)	0.0017	0.0180**	0.0000	0.0025	0.0147	0.0053

	(0.0048)	(0.0088)	(0.0054)	(0.0052)	(0.0123)	(0.0072)
<i>(Within) R Squared</i>	0.2728	0.2974	0.2668	0.0882	0.1040	0.0780
Largest Patch Index (LPI_k)	0.0544 (0.0410)	0.1252** (0.0599)	0.0538 (0.0507)	0.0518 (0.0492)	0.0599 (0.0918)	0.1501* (0.0770)
<i>(Within) R Squared</i>	0.2730	0.2974	0.2669	0.0882	0.1039	0.0786
Mean Patch Size (MPS_k)	0.0051** (0.0023)	0.0087** (0.0040)	0.0057** (0.0028)	0.0089*** (0.0028)	0.0110** (0.0051)	0.0161*** (0.0049)
<i>(Within) R Squared</i>	0.2732	0.2976	0.2674	0.0889	0.1046	0.0798
Panel E: Discontinuous Very-Low-Density Urban Fabric						
Percentage of Landscape (POL_k)	-70.5143** (29.1972)	-70.7882 (56.5568)	-65.4855** (31.7784)	15.1210 (21.4774)	35.3289 (34.6361)	-12.7870 (25.7467)
<i>(Within) R Squared</i>	0.2739	0.2973	0.2680	0.0882	0.1039	0.0780
Patch Density (PDe_k)	-0.3794 (0.2343)	-0.8863 (0.5764)	-0.1938 (0.2358)	0.2042 (0.2161)	0.1328 (0.4269)	0.0606 (0.2700)
<i>(Within) R Squared</i>	0.2732	0.2977	0.2669	0.0882	0.1038	0.0780
Edge Density (EDe_k)	-0.1178* (0.0614)	-0.1427 (0.1234)	-0.0935 (0.0655)	0.0544 (0.0407)	0.0686 (0.0492)	0.0167 (0.0575)
<i>(Within) R Squared</i>	0.2734	0.2974	0.2672	0.0882	0.1039	0.0780
Largest Patch Index (LPI_k)	-0.8851*** (0.3313)	-0.4692 (0.4956)	-0.9449** (0.3750)	0.0767 (0.2614)	0.2732 (0.5003)	-0.2355 (0.3009)

<i>(Within) R Squared</i>	0.2741	0.2970	0.2687	0.0881	0.1039	0.0780
Mean Patch Size (MPS_k)	-0.0312*** (0.0113)	-0.0149 (0.0143)	-0.0339** (0.0131)	0.0009 (0.0090)	0.0061 (0.0175)	-0.0090 (0.0103)
<i>(Within) R Squared</i>	0.2743	0.2969	0.2690	0.0881	0.1039	0.0780
Constant	Yes	Yes	Yes	Yes	Yes	Yes
Controls	Yes	Yes	Yes	Yes	Yes	Yes
Individual Fixed Effects	No	No	No	Yes	Yes	Yes
City Fixed Effects	Yes	Yes	Yes	Yes	Yes	Yes
Year Fixed Effects	Yes	Yes	Yes	Yes	Yes	Yes
Observations	20 985	9 283	11 702	20 985	9 283	11 702
Individuals	3 856	2 119	2 652	3 856	2 119	2 652

Robust standard errors clustered at household level in parentheses

*** $p < 0.01$, ** $p < 0.05$, * $p < 0.1$

Notes: Every coefficient estimate comes from a separate regression of Equation 1. The dependent variable is *life satisfaction* on a 0/10 scale. The treatment radius is 1,000 metres. The census is the mean number of residents per square kilometre (which is about 5,908 in our estimation sample), as defined by the Federal Statistical Office's 2011 Microcensus. All regressions include city and year fixed effects and a constant. All figures are rounded to four decimal places. See Section 2 for variable definitions and descriptive statistics.

Sources: SOEP, 2000-2014, individuals aged 17 or above; EUA, 2006, 35 major German cities with inhabitants equal to or greater than 100,000; own calculations.

Table W9a: Overall Fragmentation, Treatment Radius of 1,000 Metres (Random Effects Model)

	Average	Life Satisfaction Random Effects Greater Census	Smaller Census
Patch Density (PDe)	0.0003 (0.0008)	-0.0003 (0.0015)	0.0003 (0.0012)
<i>(Within) R Squared</i>	0.0778	0.0796	0.0767
Edge Density (EDe)	0.9246 (1.3799)	-1.3429 (2.8103)	1.0527 (1.8154)
<i>(Within) R Squared</i>	0.0778	0.0796	0.0767
Largest Patch Index (LPI)	-0.0013 (0.0020)	0.0047 (0.0047)	-0.0017 (0.0022)
<i>(Within) R Squared</i>	0.0778	0.0796	0.0767
Shannon's Evenness Index (SEI)	-0.0083 (0.1514)	0.1455 (0.2802)	-0.2111 (0.1878)
<i>(Within) R Squared</i>	0.0778	0.0795	0.0767
Constant	Yes	Yes	Yes
Controls	Yes	Yes	Yes
Individual Fixed Effects	Yes	Yes	Yes
City Fixed Effects	Yes	Yes	Yes
Year Fixed Effects	Yes	Yes	Yes

Observations	57 588	23 332	34 256
Individuals	14 744	6 267	9 392

Robust standard errors clustered at household level in parentheses

*** $p < 0.01$, ** $p < 0.05$, * $p < 0.1$

Notes: Every coefficient estimate comes from a separate regression of Equation 1 (without individual but with random effects). The dependent variable is *life satisfaction* on a 0/10 scale. The treatment radius is 1,000 metres. The census is the mean number of residents per square kilometre (which is about 5,908 in our estimation sample), as defined by the Federal Statistical Office's 2011 Microcensus. All regressions include city and year fixed effects and a constant. All figures are rounded to four decimal places. See Section 2 for variable definitions and descriptive statistics.

Sources: SOEP, 2000-2014, individuals aged 17 or above; EUA, 2006, 35 major German cities with inhabitants equal to or greater than 100,000; own calculations.

Table W9b: Fabric Fragmentation, Treatment Radius of 1,000 Metres (Random Effects Model)

	Average	Life Satisfaction Random Effects Greater Census	Smaller Census
Panel A: Continuous Urban Fabric			
Percentage of Landscape (POL_k)	0.0731 (0.0879)	0.1287 (0.1299)	0.0456 (0.1850)
<i>R Squared</i>	0.0778	0.0796	0.0767
Patch Density (PDe_k)	0.0011 (0.0009)	0.0019 (0.0015)	0.0012 (0.0019)
<i>R Squared</i>	0.0778	0.0796	0.0767
Edge Density (EDe_k)	0.0001 (0.0002)	0.0003 (0.0003)	0.0001 (0.0004)
<i>R Squared</i>	0.0778	0.0796	0.0767
Largest Patch Index (LPI_k)	-0.0055 (0.0188)	-0.0229 (0.0300)	0.0127 (0.0250)
<i>R Squared</i>	0.0778	0.0797	0.0767
Mean Patch Size (MPS_k)	0.0011 (0.0028)	0.0011 (0.0051)	0.0009 (0.0036)
<i>R Squared</i>	0.0778	0.0795	0.0767
Panel B: Discontinuous Dense Urban Fabric			

Percentage of Landscape (POL_k)	0.0040 (0.0948)	-0.2821 (0.1734)	0.1034 (0.1266)
<i>R Squared</i>	0.0778	0.0796	0.0767
Patch Density (PDe_k)	-0.0008 (0.0017)	-0.0054* (0.0031)	0.0003 (0.0023)
<i>R Squared</i>	0.0778	0.0796	0.0767
Edge Density (EDe_k)	0.0000 (0.0002)	-0.0009* (0.0005)	0.0002 (0.0003)
<i>R Squared</i>	0.0778	0.0796	0.0767
Largest Patch Index (LPI_k)	0.0111 (0.0095)	-0.0029 (0.0167)	0.0209* (0.0120)
<i>R Squared</i>	0.0778	0.0796	0.0767
Mean Patch Size (MPS_k)	0.0032 (0.0020)	0.0018 (0.0032)	0.0039 (0.0027)
<i>R Squared</i>	0.0778	0.0795	0.0767
Panel C: Discontinuous Medium-Density Urban Fabric			
Percentage of Landscape (POL_k)	0.2835 (0.2086)	0.8261** (0.3653)	0.1781 (0.2758)
<i>R Squared</i>	0.0778	0.0797	0.0767
Patch Density (PDe_k)	0.0023	0.0143*	-0.0001

	(0.0046)	(0.0079)	(0.0060)
<i>R Squared</i>	0.0778	0.0797	0.0767
Edge Density (ED_{ek})	0.0006 (0.0006)	0.0026** (0.0011)	0.0002 (0.0008)
<i>R Squared</i>	0.0778	0.0797	0.0767
Largest Patch Index (LPI_k)	0.0050 (0.0117)	0.0116 (0.0191)	-0.0016 (0.0158)
<i>R Squared</i>	0.0778	0.0796	0.0767
Mean Patch Size (MPS_k)	0.0007 (0.0011)	-0.0000 (0.0017)	0.0001 (0.0016)
<i>R Squared</i>	0.0778	0.0796	0.0767
Panel D: Discontinuous Low-Density Urban Fabric			
Percentage of Landscape (POL_k)	1.3220 (0.9104)	2.5325 (2.3909)	1.4740 (1.0434)
<i>R Squared</i>	0.0778	0.0796	0.0768
Patch Density (PDE_k)	-0.0043 (0.0187)	0.0162 (0.0499)	-0.0024 (0.0209)
<i>R Squared</i>	0.0778	0.0796	0.0767
Edge Density (ED_{ek})	0.0021 (0.0028)	0.0075 (0.0082)	0.0021 (0.0032)

<i>R Squared</i>	0.0778	0.0796	0.0767
Largest Patch Index (LPI_k)	0.0480* (0.0250)	0.0750 (0.0515)	0.0571 (0.0309)
<i>R Squared</i>	0.0779	0.0795	0.0768
Mean Patch Size (MPS_k)	0.0050*** (0.0015)	0.0075*** (0.0028)	0.0053*** (0.0019)
<i>R Squared</i>	0.0780	0.0797	0.0770
Panel E: Discontinuous Very-Low-Density Urban Fabric			
Percentage of Landscape (POL_k)	3.7677 (13.0001)	33.2357 (23.4663)	-8.1071 (15.3245)
<i>R Squared</i>	0.0778	0.0796	0.0767
Patch Density (PDe_k)	-0.0133 (0.1179)	-0.0169 (0.2762)	-0.0679 (0.1346)
<i>R Squared</i>	0.0778	0.0796	0.0767
Edge Density (EDe_k)	0.0148 (0.0276)	0.0516 (0.0427)	-0.0067 (0.0337)
<i>R Squared</i>	0.0778	0.0796	0.0767
Largest Patch Index (LPI_k)	0.0324 (0.1494)	0.3826 (0.2860)	-0.1174 (0.1772)

<i>R Squared</i>	0.0778	0.0796	0.0767
Mean Patch Size (MPS_k)	0.0001 (0.0051)	0.0121 (0.0097)	-0.0053 (0.0061)
<i>R Squared</i>	0.0778	0.0796	0.0767
Constant	Yes	Yes	Yes
Controls	Yes	Yes	Yes
Individual Fixed Effects	Yes	Yes	Yes
City Fixed Effects	Yes	Yes	Yes
Year Fixed Effects	Yes	Yes	Yes
Observations	57 588	23 332	34 256
Individuals	14 744	6 267	9 392

Robust standard errors clustered at household level in parentheses

*** $p < 0.01$, ** $p < 0.05$, * $p < 0.1$

Notes: Every coefficient estimate comes from a separate regression of Equation 1 (without individual but with random effects). The dependent variable is *life satisfaction* on a 0/10 scale. The treatment radius is 1,000 metres. The census is the mean number of residents per square kilometre (which is about 5,908 in our estimation sample), as defined by the Federal Statistical Office's 2011 Microcensus. All regressions include city and year fixed effects and a constant. All figures are rounded to four decimal places. See Section 2 for variable definitions and descriptive statistics.

Sources: SOEP, 2000-2014, individuals aged 17 or above; EUA, 2006, 35 major German cities with inhabitants equal to or greater than 100,000; own calculations.

Table W10a: Overall Fragmentation, Treatment Radius of 1,000 Metres (Mixed Effects Model)

	Life Satisfaction		
	Average	Individual Fixed Effects Greater Census	Smaller Census
Patch Density (PDe)	0.0025 (0.0018)	-0.0035 (0.0038)	0.0043 (0.0031)
<i>chi2</i>	6928.9623	2873.6203	4474.1626
Edge Density (EDe)	4.9346* (2.8199)	-3.2648 (6.5334)	4.7649 (4.1555)
<i>(Within) R Squared</i>	6929.9576	2873.9493	4469.6696
Largest Patch Index (LPI)	-0.0055 (0.0040)	0.0031 (0.0090)	-0.0067 (0.0050)
<i>(Within) R Squared</i>	6930.5044	2882.6731	4470.9491
Shannon's Evenness Index (SEI)	0.2292 (0.2930)	-0.2098 (0.5487)	-0.1390 (0.4816)
<i>(Within) R Squared</i>	6931.6765	2882.6811	4476.0658
Constant	Yes	Yes	Yes
Controls	Yes	Yes	Yes
Individual Fixed Effects	Yes	Yes	Yes
City Fixed Effects	No	No	No

Year Fixed Effects	No	No	No
Observations	57 588	23 332	34 256
Individuals	8 753	3 932	5 375

Robust standard errors clustered at household level in parentheses

*** $p < 0.01$, ** $p < 0.05$, * $p < 0.1$

Notes: Every coefficient estimate comes from a mixed effects model based on separate regressions of Equation 1. The dependent variable is *life satisfaction* on a 0/10 scale. The treatment radius is 1,000 metres. The census is the mean number of residents per square kilometre (which is about 5,908 in our estimation sample), as defined by the Federal Statistical Office's 2011 Microcensus. All regressions include city fixed effects and a constant. All figures are rounded to four decimal places. See Section 2 for variable definitions and descriptive statistics.

Sources: SOEP, 2003-2009, individuals aged 17 or above; EUA, 2006, 35 major German cities with inhabitants equal to or greater than 100,000; own calculations

Table W10b: Fabric Fragmentation, Treatment Radius of 1,000 Metres (Mixed Effects Model)

	Average	Life Satisfaction Individual + City Fixed Effects Greater Census	Smaller Census
Panel A: Continuous Urban Fabric			
Percentage of Landscape (POL_k)	0.0683 (0.1860)	-0.2856 (0.2901)	0.4236 (0.5022)
<i>χ Squared</i>	6933.0193	2875.2136	4469.4154
Patch Density (PDe_k)	0.0012 (0.0021)	-0.0042 (0.0037)	0.0066 (0.0052)
<i>χ Squared</i>	6931.4310	2871.7493	4467.8139
Edge Density (EDe_k)	0.0002 (0.0005)	-0.0009 (0.0008)	0.0011 (0.0012)
<i>χ Squared</i>	6932.3050	2873.4917	4469.5074
Largest Patch Index (LPI_k)	-0.0073 (0.0373)	-0.0839 (0.0679)	0.0271 (0.0651)
<i>χ Squared</i>	6928.7085	2872.2648	4471.3873
Mean Patch Size (MPS_k)	0.0009 (0.0057)	-0.0033 (0.0110)	-0.0006 (0.0089)
<i>χ Squared</i>	6929.7684	2882.7376	4466.4865

Panel B: Discontinuous Dense Urban Fabric

Percentage of Landscape (POL_k) 0.3063 0.5871 0.4001
(0.1900) (0.3681) (0.3268)

χ Squared 6945.2909 2882.6019 4471.4014

Patch Density (PDe_k) 0.0063* 0.0085 0.0063
(0.0036) (0.0069) (0.0060)

χ Squared 6941.9909 2876.6449 4471.4542

Edge Density (EDe_k) 0.0009 0.0013 0.0013
(0.0006) (0.0011) (0.0009)

χ Squared 6944.0418 2879.5243 4470.3644

Largest Patch Index (LPI_k) 0.0154 0.0358 0.0352
(0.0212) (0.0451) (0.0352)

χ Squared 6938.4542 2873.3012 4496.9966

Mean Patch Size (MPS_k) 0.0005 0.0067 0.0040
(0.0041) (0.0071) (0.0069)

χ Squared 6937.1434 2873.7997 4492.6077

Panel C: Discontinuous Medium-Density Urban Fabric

Percentage of Landscape (POL_k) -0.4144 0.6942 -0.6285
(0.4017) (0.9091) (0.5789)

χ Squared 6937.8775 2878.9087 4477.8945

Patch Density (PDe_k)	-0.0076 (0.0091)	0.0283 (0.0187)	-0.0149 (0.0130)
<i>χ Squared</i>	6932.7180	2883.0486	4472.3635
Edge Density (EDe_k)	-0.0013 (0.0013)	0.0032 (0.0028)	-0.0020 (0.0018)
<i>χ Squared</i>	6937.0049	2882.3173	4475.4733
Largest Patch Index (LPI_k)	-0.0053 (0.0237)	0.0152 (0.0518)	-0.0082 (0.0411)
<i>χ Squared</i>	6937.6204	2877.2536	4468.9266
Mean Patch Size (MPS_k)	0.0011 (0.0025)	-0.0016 (0.0044)	0.0024 (0.0042)
<i>χ Squared</i>	6939.1772	2876.3579	4466.4197
Panel D: Discontinuous Low-Density Urban Fabric			
Percentage of Landscape (POL_k)	2.2575 (1.7520)	7.3824** (2.9465)	2.2958 (2.5830)
<i>χ Squared</i>	6929.5116	2876.8679	4469.9111
Patch Density (PDe_k)	-0.0074 (0.0391)	0.1506** (0.0684)	-0.0156 (0.0568)
<i>χ Squared</i>	6929.7290	2881.8881	4471.5559

Edge Density (ED_{ek})	0.0037 (0.0058)	0.0282*** (0.0099)	0.0019 (0.0086)
<i>χ Squared</i>	6928.4027	2881.6112	4470.3046
Largest Patch Index (LPI_k)	0.0760 (0.0556)	0.1602 (0.1233)	0.0873 (0.0866)
<i>χ Squared</i>	6934.0404	2879.9399	4474.9307
Mean Patch Size (MPS_k)	0.0099*** (0.0031)	0.0143** (0.0063)	0.0110** (0.0049)
<i>χ Squared</i>	6945.6558	2882.8733	4480.9573
Panel E: Discontinuous Very-Low-Density Urban Fabric			
Percentage of Landscape (POL_k)	13.9007 (20.3709)	29.2346 (38.7227)	-11.8837 (24.7179)
<i>χ Squared</i>	6934.0531	2877.5282	4473.9180
Patch Density (PDe_k)	0.0414 (0.2607)	0.1251 (0.4862)	-0.1532 (0.3554)
<i>χ Squared</i>	6932.9340	2876.7797	4472.5245
Edge Density (ED_{ek})	0.0451 (0.0444)	0.0641 (0.0549)	0.0101 (0.0686)
<i>χ Squared</i>	6937.7514	2880.9547	4475.6119

Largest Patch Index (LPI_k)	0.1196 (0.2400)	0.1591 (0.5666)	-0.1578 (0.2746)
<i>χ Squared</i>	6936.3662	2874.1139	4474.8937
Mean Patch Size (MPS_k)	0.0029 (0.0082)	0.0014 (0.0198)	-0.0061 (0.0091)
<i>χ Squared</i>	6937.4653	2873.4181	4476.2614
Constant	Yes	Yes	Yes
Controls	Yes	Yes	Yes
Individual Fixed Effects	Yes	Yes	Yes
City Fixed Effects	No	No	No
Year Fixed Effects	No	No	No
Observations	57 588	23 332	34 256
Individuals	8 753	3 932	5 375

Robust standard errors clustered at household level in parentheses

*** $p < 0.01$, ** $p < 0.05$, * $p < 0.1$

Notes: Every coefficient estimate comes from a mixed effects model based on separate regressions of Equation 1. The dependent variable is *life satisfaction* on a 0/10 scale. The treatment radius is 1,000 metres. The census is the mean number of residents per square kilometre (which is about 5,908 in our estimation sample), as defined by the Federal Statistical Office's 2011 Microcensus. All regressions include city fixed effects and a constant. All figures are rounded to four decimal places. See Section 2 for variable definitions and descriptive statistics.

Sources: SOEP, 2003-2009, individuals aged 17 or above; EUA, 2006, 35 major German cities with inhabitants equal to or greater than 100,000; own calculations.